

BEFORE DOING ANY TROUBLESHOOTING ON THE OVEN, MAKE SURE THOSE POINTS ARE OKAY



HOT ROCKS

- Does the main gas valve is open?
- Does the ventilation hood is turn on?
- Does the oven is plug to a good electrical source?
- Is there a press emergency stop button?

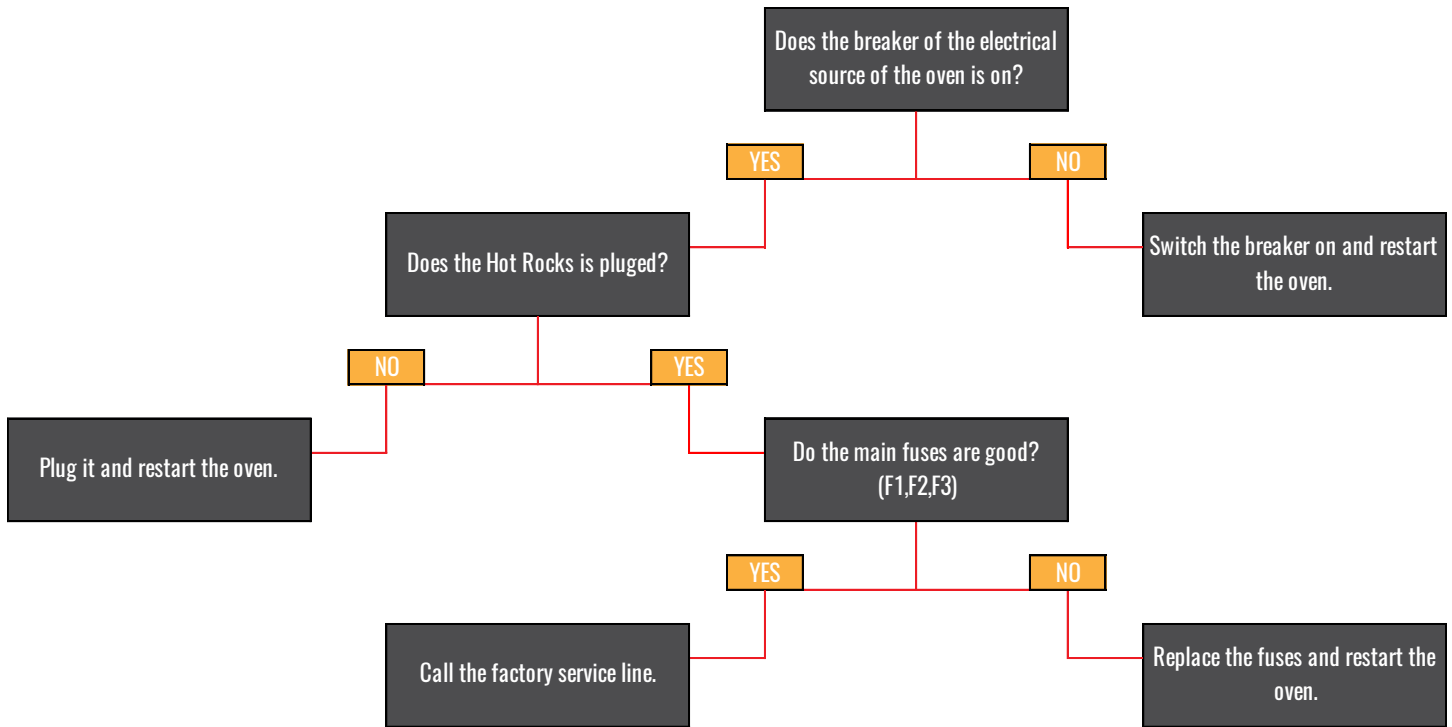
CASE 1 - OVEN IS NOT STARTING AFTER TURNING ON THE MAIN SWITCH

Observations:

The screen does not turn on.

There is no sound of working fans.

The buzzer doesn't sound after turning on the main switch.



BEFORE DOING ANY TROUBLESHOOTING ON THE OVEN, MAKE SURE THOSE POINTS ARE OKAY



HOT ROCKS

- Does the main gas valve is open?
- Does the ventilation hood is turn on?
- Does the oven is plug to a good electrical source?
- Is there a press emergency stop button?

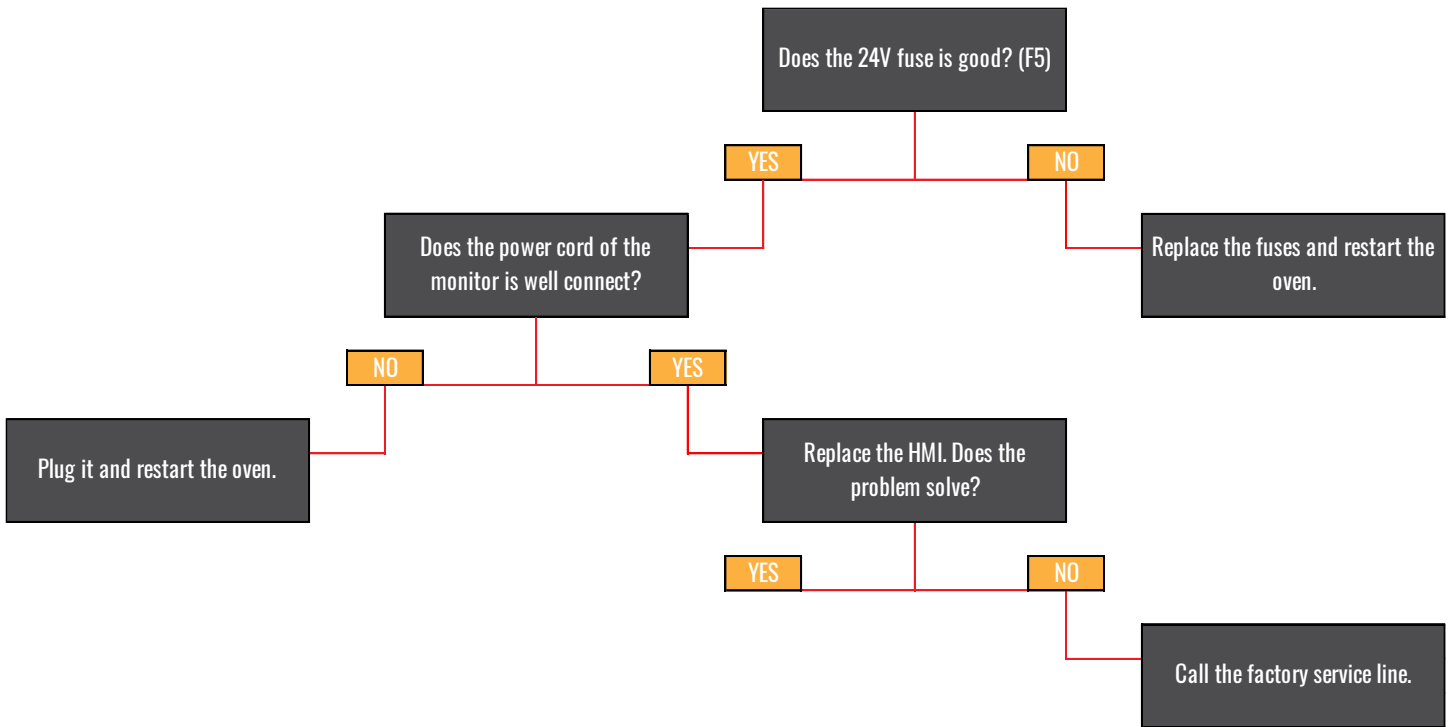
CASE 2 – OVEN'S SCREEN IS NOT STARTING AFTER TURNING ON THE MAIN SWITCH

Observations:

The screen does not turn on.

There is no sound of working fans.

The buzzer doesn't sound after turning on the main switch.



BEFORE DOING ANY TROUBLESHOOTING ON THE OVEN, MAKE SURE THOSE POINTS ARE OKAY



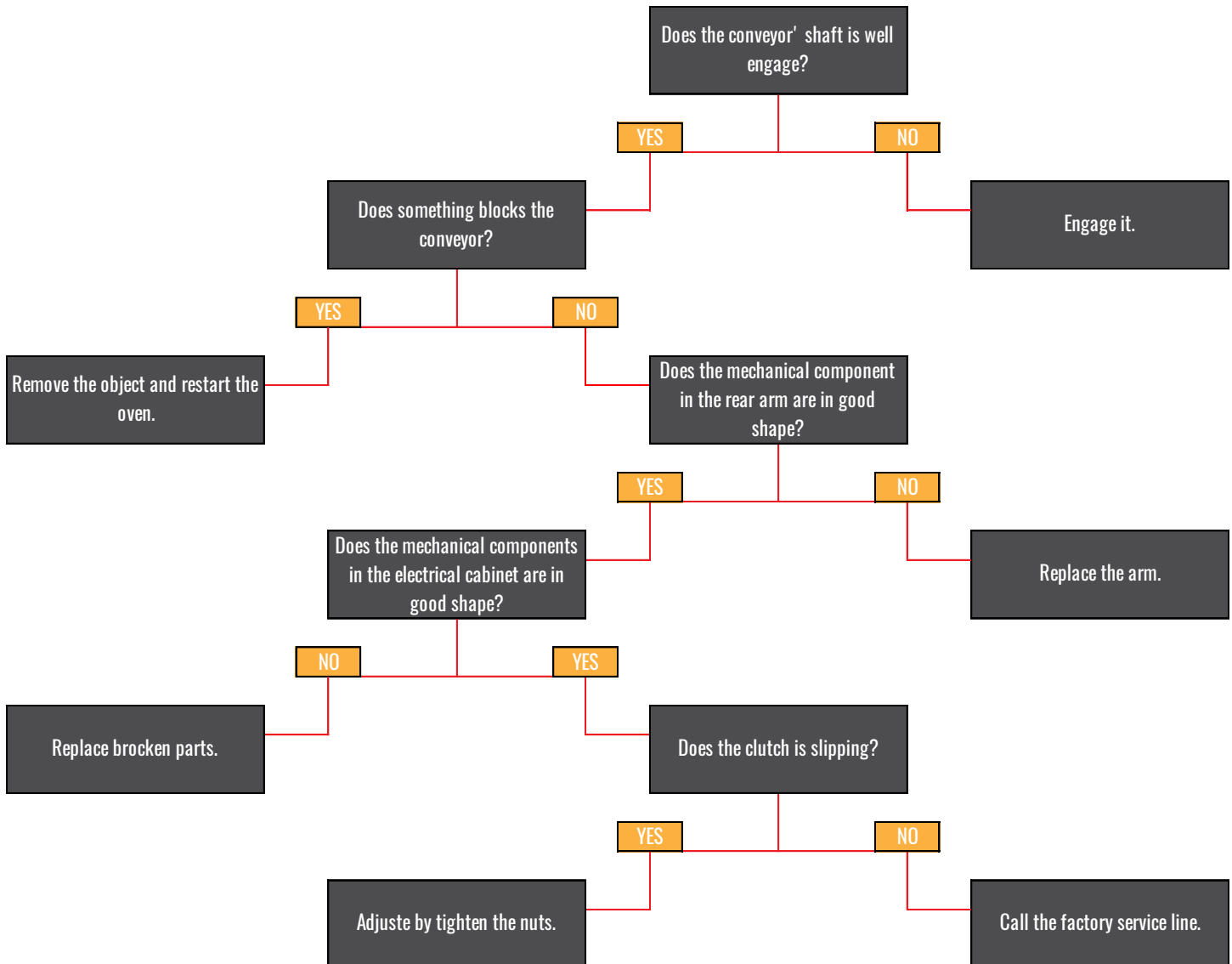
HOT ROCKS

- Does the main gas valve is open?
- Does the ventilation hood is turn on?
- Does the oven is plug to a good electrical source?
- Is there a press emergency stop button?

CASE 3 – WIRE MESH ENTRY AND/OR EXIT CONVEYORS DO NOT TURN.

Observations:

Wire mesh entry and/or exit conveyor do not turn.
No alarm on the screen.



BEFORE DOING ANY TROUBLESHOOTING ON THE OVEN, MAKE SURE THOSE POINTS ARE OKAY



HOT ROCKS

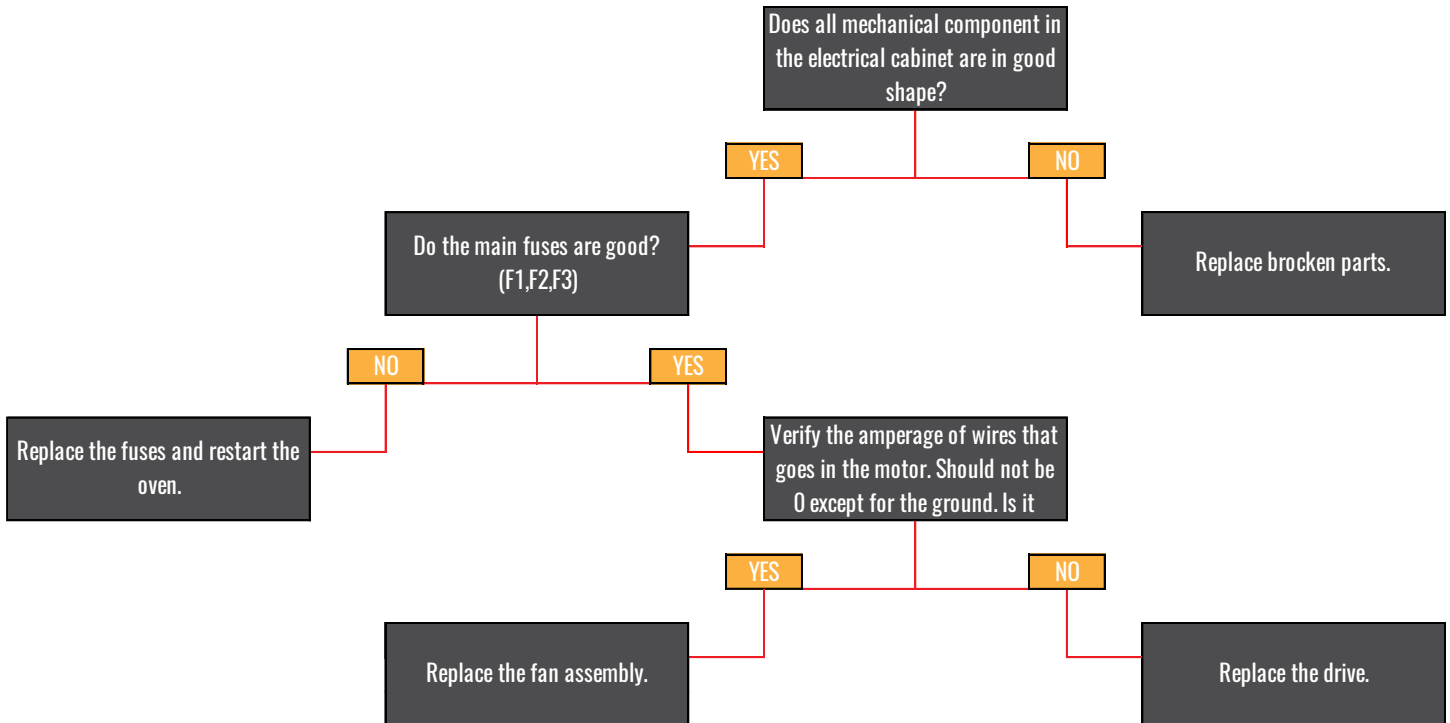
- Does the main gas valve is open?
- Does the ventilation hood is turn on?
- Does the oven is plug to a good electrical source?
- Is there a press emergency stop button?

CASE 4 – VENTILATION'S MOTOR IS NOT TURNING.

Observations:

Fan does not work.

No alarm on the screen.



BEFORE DOING ANY TROUBLESHOOTING ON THE OVEN, MAKE SURE THOSE POINTS ARE OKAY



HOT ROCKS

- Does the main gas valve is open?
- Does the ventilation hood is turn on?
- Does the oven is plug to a good electrical source?
- Is there a press emergency stop button?

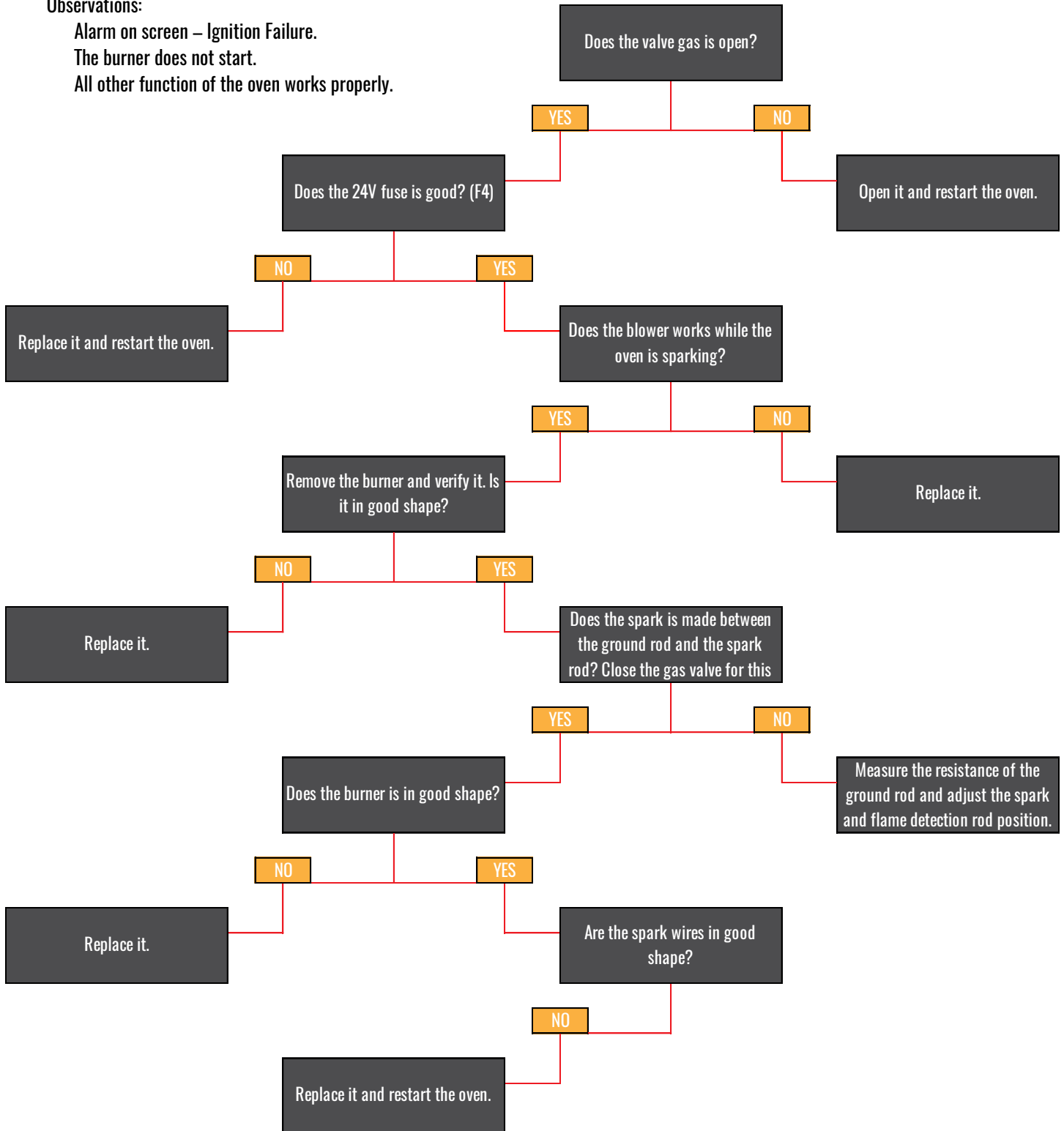
CASE 5 – ALARM ON SCREEN – IGNITION FAILURE.

Observations:

Alarm on screen – Ignition Failure.

The burner does not start.

All other function of the oven works properly.



BEFORE DOING ANY TROUBLESHOOTING ON THE OVEN, MAKE SURE THOSE POINTS ARE OKAY



HOT ROCKS

- Does the main gas valve is open?
- Does the ventilation hood is turn on?
- Does the oven is plug to a good electrical source?
- Is there a press emergency stop button?

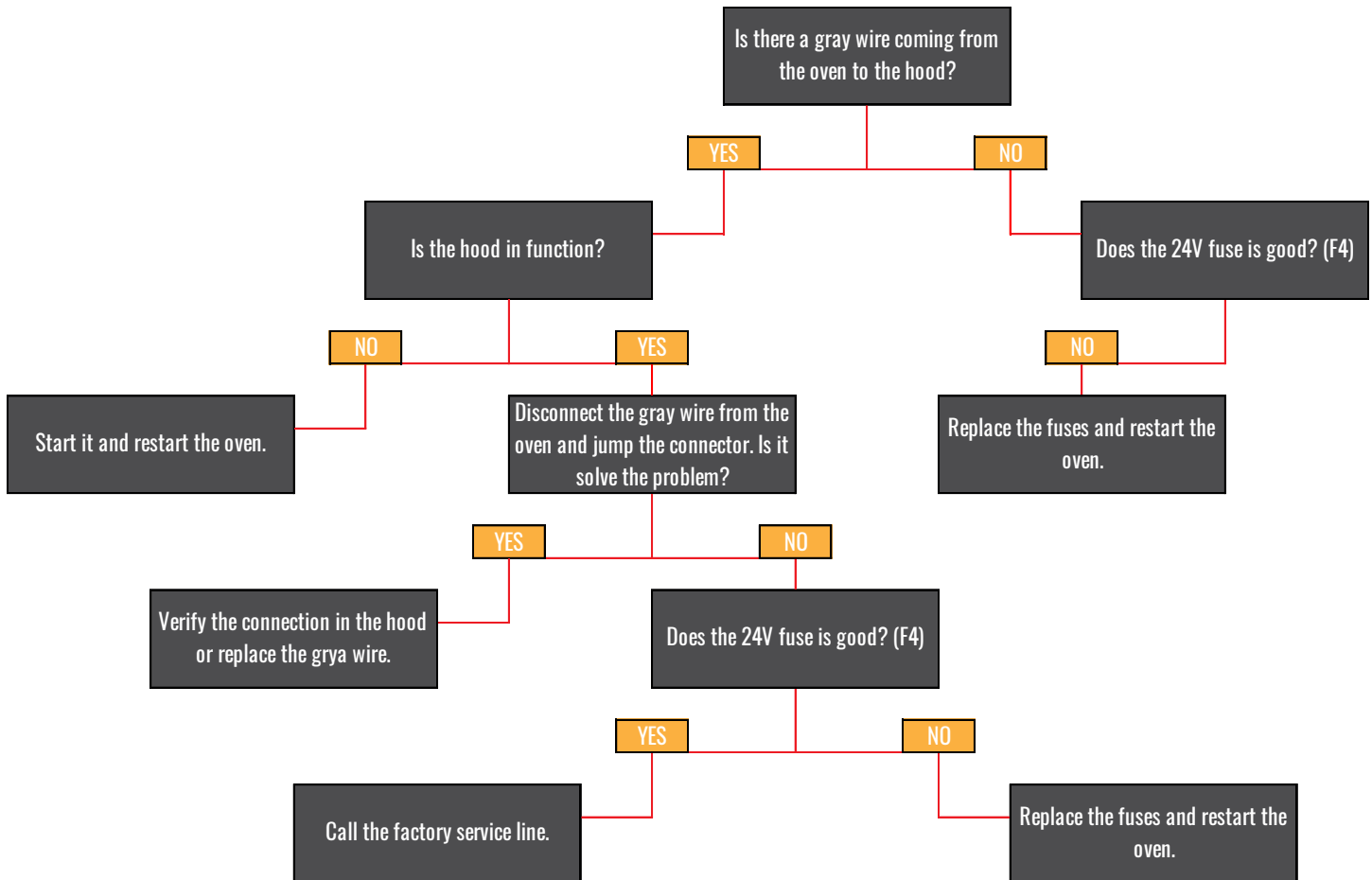
CASE 6 – ALARM ON SCREEN – PRESSURE SWITCH.

Observations:

Alarm on screen - Pressure Switch.

The burner does not start.

All other function of the oven works properly.



BEFORE DOING ANY TROUBLESHOOTING ON THE OVEN, MAKE SURE THOSE POINTS ARE OKAY



HOT ROCKS

- Does the main gas valve is open?
- Does the ventilation hood is turn on?
- Does the oven is plug to a good electrical source?
- Is there a press emergency stop button?

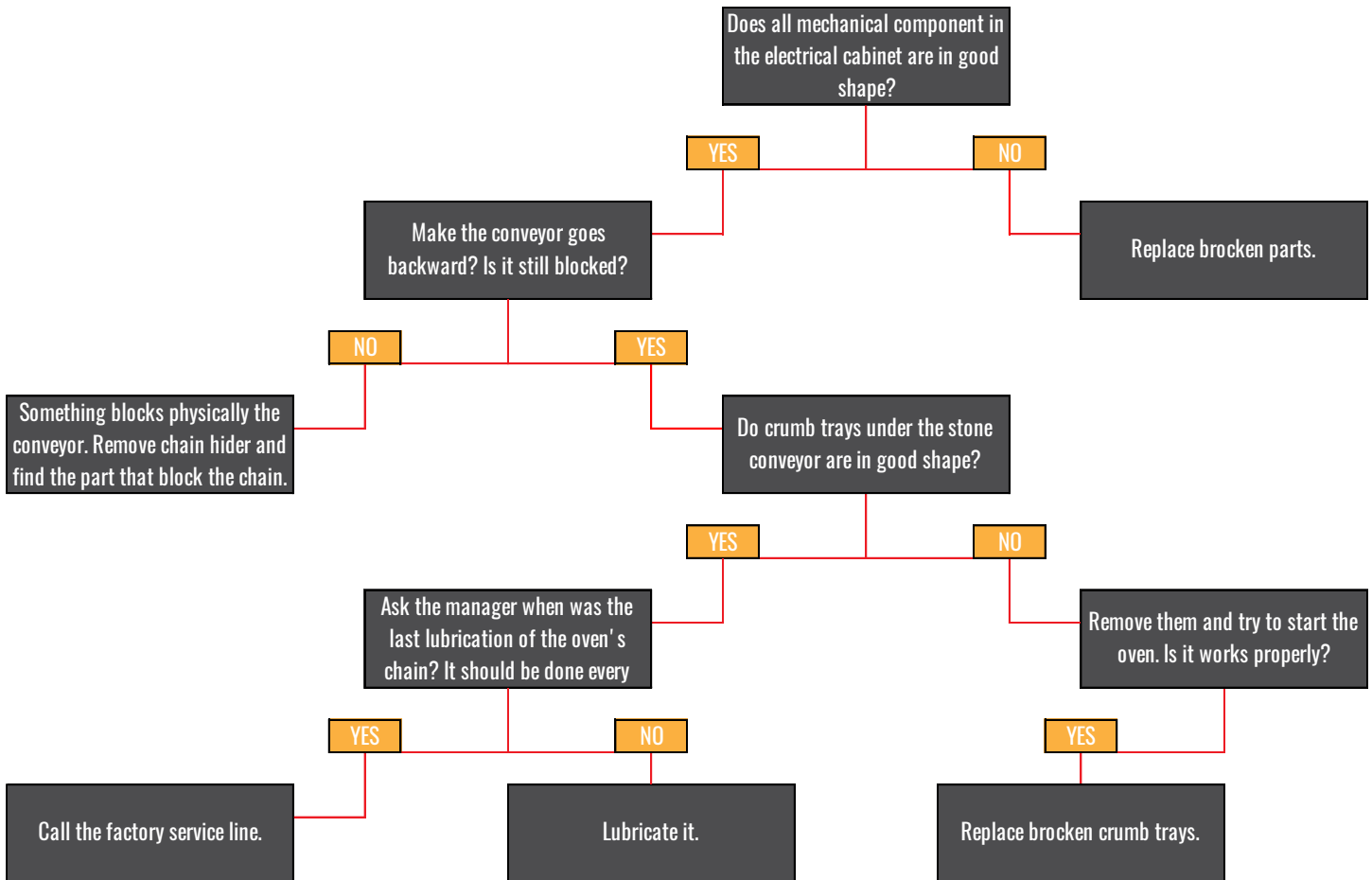
CASE 7 – ALARM ON SCREEN – HIGH TORQUE.

Observations:

Alarm on screen - High Torque.

Stone conveyor and mesh conveyor does not turn.

If the conveyor moves, it makes strange noises.



BEFORE DOING ANY TROUBLESHOOTING ON THE OVEN, MAKE SURE THOSE POINTS ARE OKAY



HOT ROCKS

- Does the main gas valve is open?
- Does the ventilation hood is turn on?
- Does the oven is plug to a good electrical source?
- Is there a press emergency stop button?

CASE 8 – ALARM ON SCREEN – EMERGENCY STOP.

Observations:

Alarm on screen - Emergency Stop.

The conveyor is not turning.

The buzzer is making sound.

