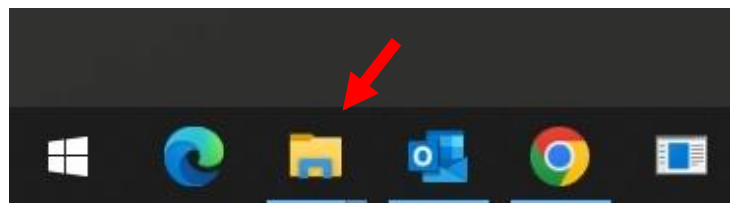


# How to replace PLC ( HR11-0055-A)





# Step 1

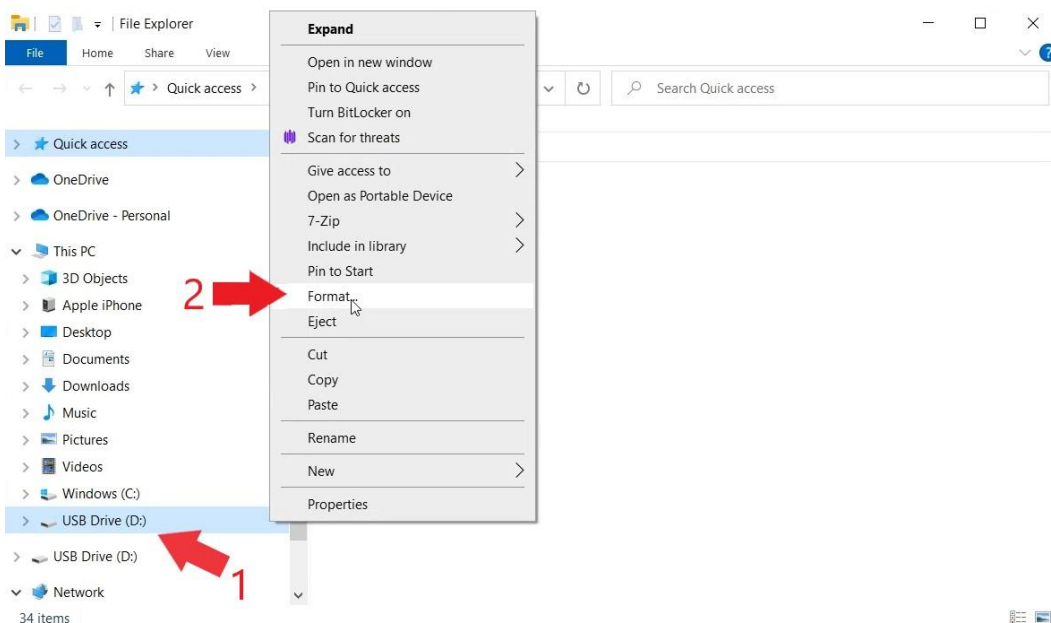
Use a PC to sort the files on the SD card and keep only the correct ones

First, insert them into your computer  
Then you must have the USB key and microSD card formatted to FAT32 To do this, follow the instructions below

Click on the FILE EXPLORER icon near of the Windows ICON

1 - Find your USB Drive on the left menu.  
Usually it's the letter (D:)

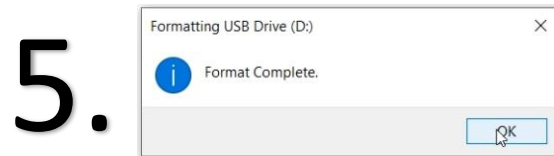
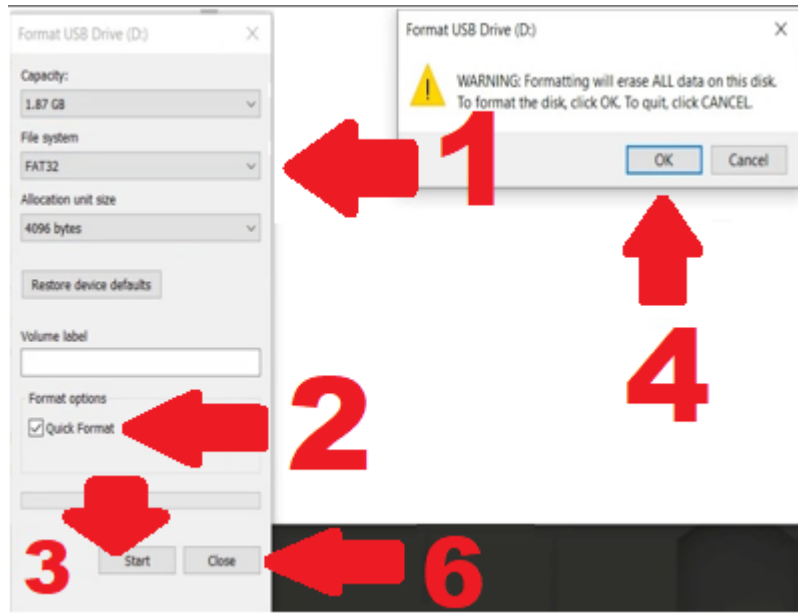
2- By clicking the right mouse button, a menu of options appears. Select the FORMAT menu



## Step 2

In the FORMAT menu

1. Make sure FAT32 has been selected from the drop-down menu
2. Check the box “QUICK FORMAT”
3. Click START
4. Click OK
5. After some time, a window will appear to indicate that everything is complete Click OK
6. To exit the FORMAT menu, click on CLOSE



# Step 3

You may get the latest versions on our website  
<https://hotrocksoven.com/downloads/>

Put the USB in the port of your PC

1- Click on the FILE EXPLORER icon

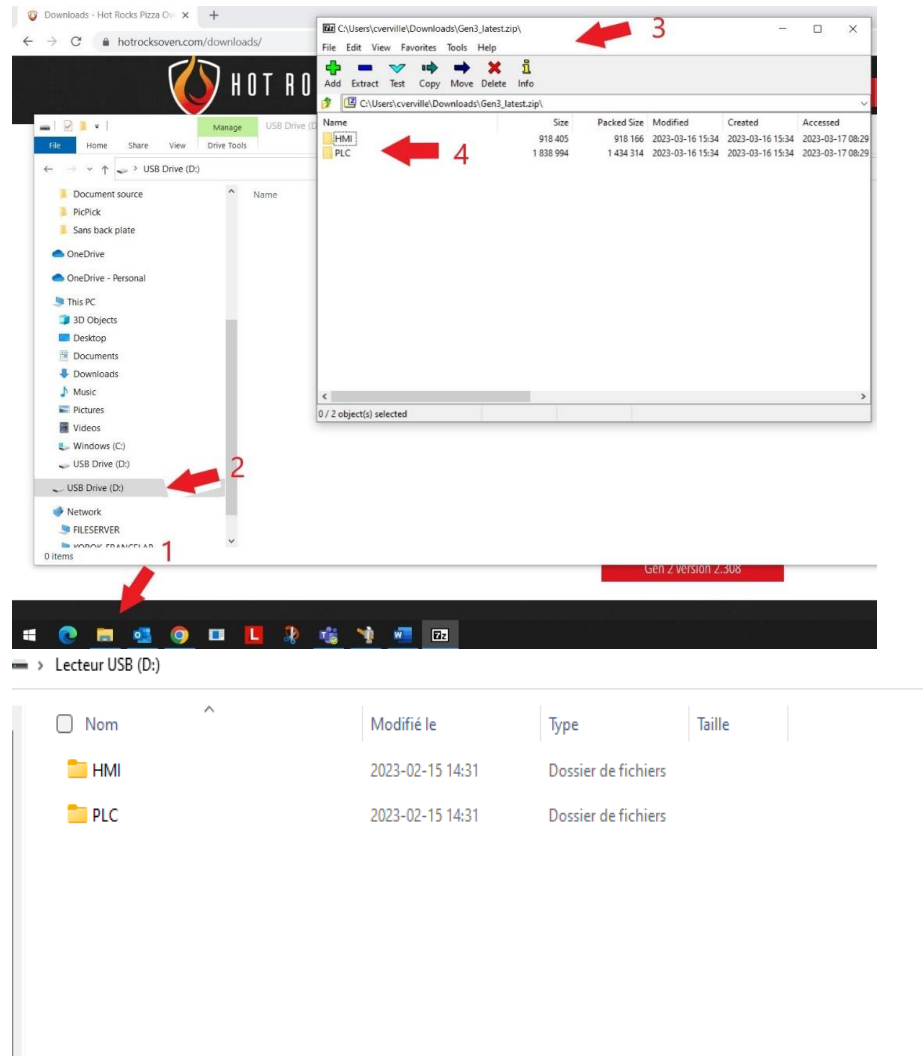
2- Select the USB Drive

3- Select the previously opened window of the latest version of the program file

4- Double click on HMI to see the file to put on USB Key as depicted on the side

← This is the documents you would have if you had a preprogrammed USB

← This is the document you should have on your USB thumb stick after modification



# Step 4

Repeat Step 2& 3 to format the SD card, note that it **won't** be necessary to download the program a second time

1- Click on the FILE EXPLORER icon

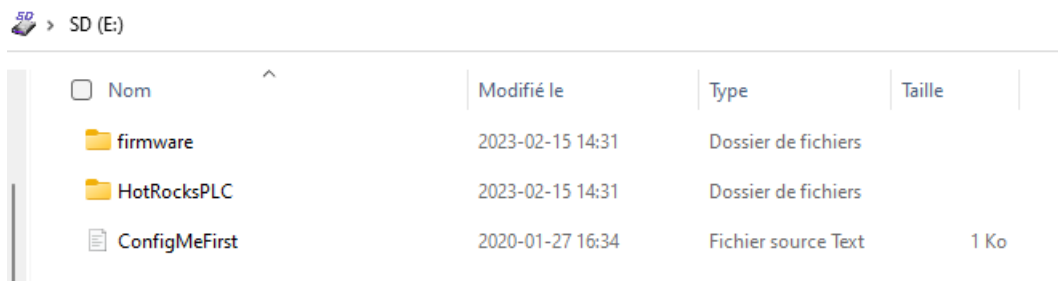
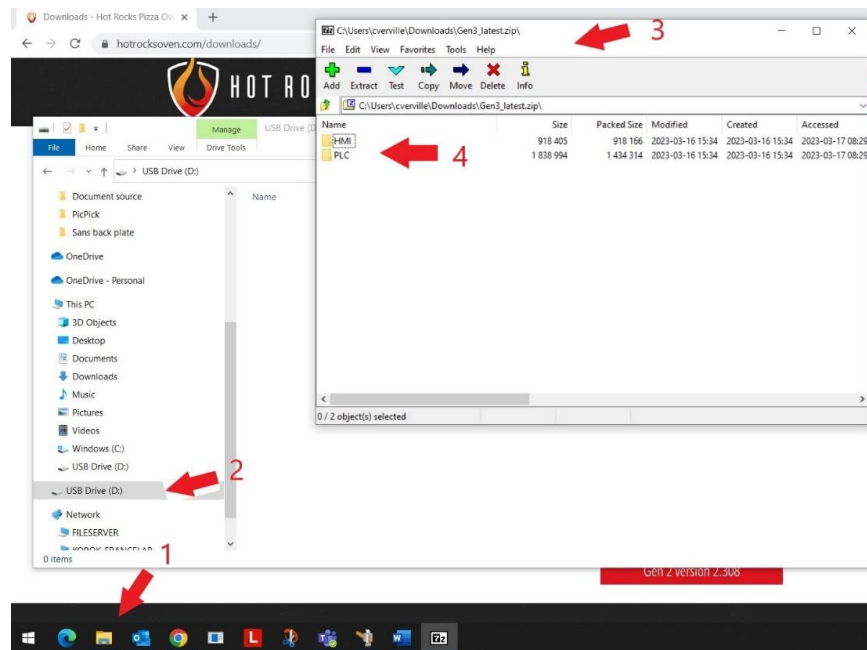
2- Select SD Card

3- Select the previously opened window of the latest version of the program file.

4-Double click on the PLC folder to see the files that you will need to upload on the microSD card

5-Select and drag the file and 2 folders into the SD card directory as demonstrated with the picture

← **This is what is required in your SD Card**





## Step 5

Unplug the electrical connection. Make sure that the oven is not powered, also disconnect the gas supply

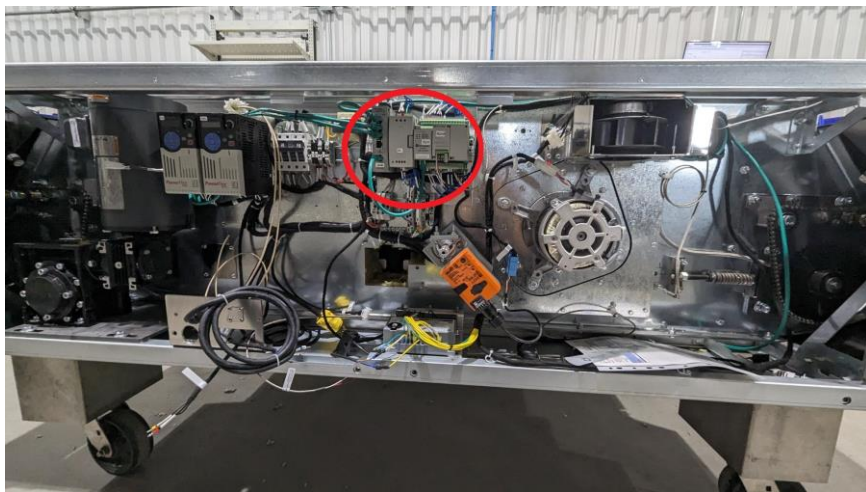
This is for your safety

Take off the side panels

You will be able to do so after moving the oven off the wall

To remove them you have to turn the latches by turning them a quarter of the way counterclockwise or by removing the screws depending on the oven's panel type



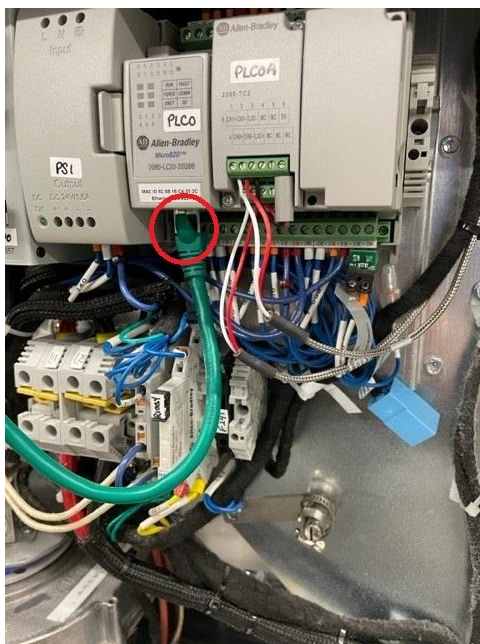


# Step 6

Find the PLC in the unit

It will be necessary to remove it from the rail.

1)



1) Start by disconnecting the Ethernet cables

2)



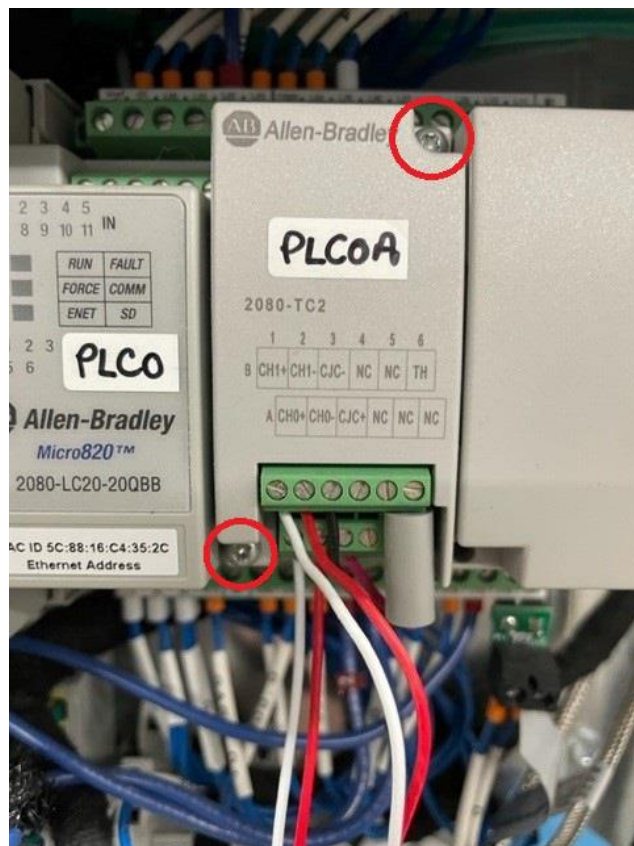
## Step 7

2) Then take off the wire strips

To do so must remove the 4 screws shown on the pictures and then pull the strip out



3)



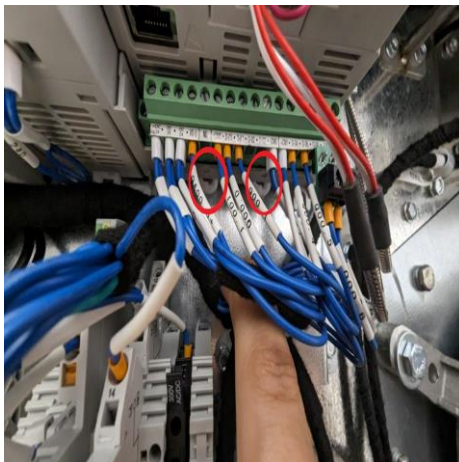
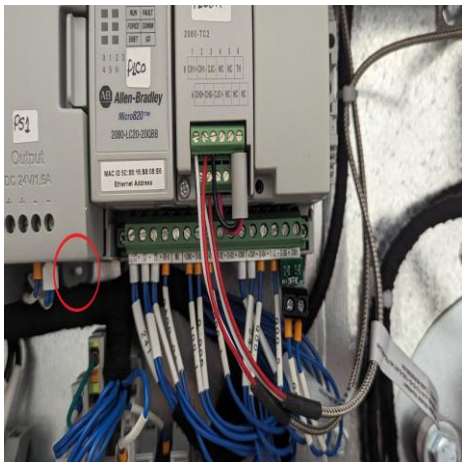
## Step 8

3) Take off the temperature card

To do so you must remove the 2 screws shown on the picture

It will then be removable by simply pulling on it

4)

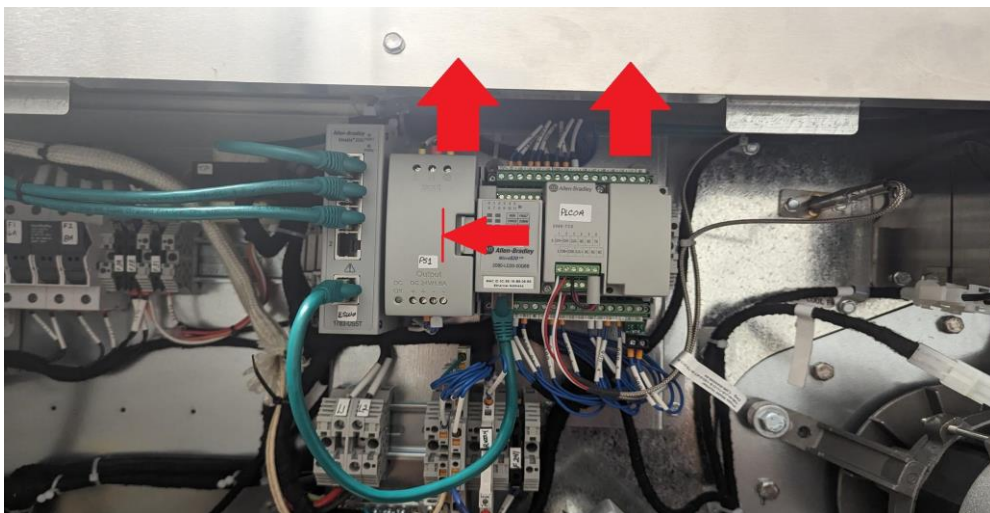


## Step 10

4) You will now need to remove the PLC & power supply assembly from the rail

To do so you will have to unclip them (pulling down with a screwdriver on the clip indicated on the pictures)

5)



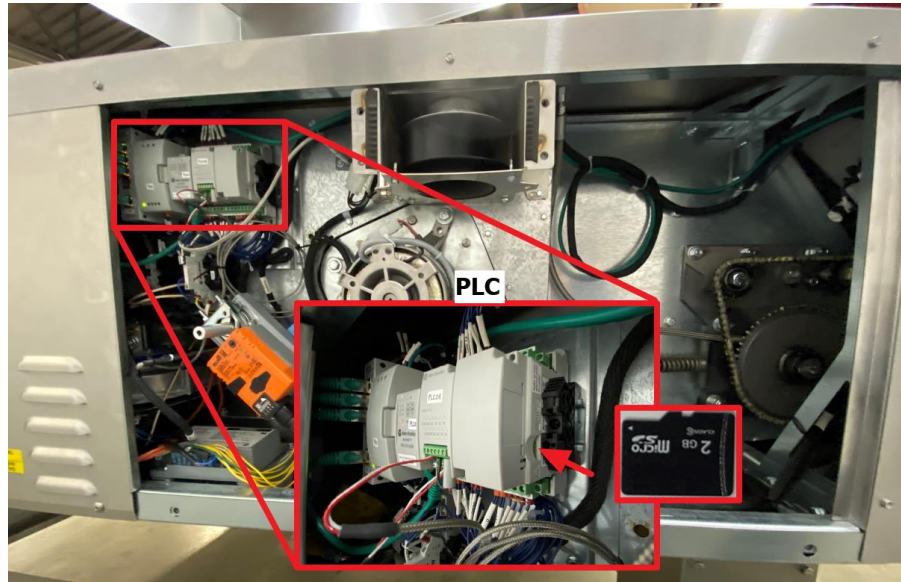
5) Now that the 3 clips holding them in place are removed you can simply pull the bottom of the PLC and power supply towards you and lift the assembly up

There is a latch holding the Power supply with the PLC you can simply push it and slide the power supply off

# Step 9

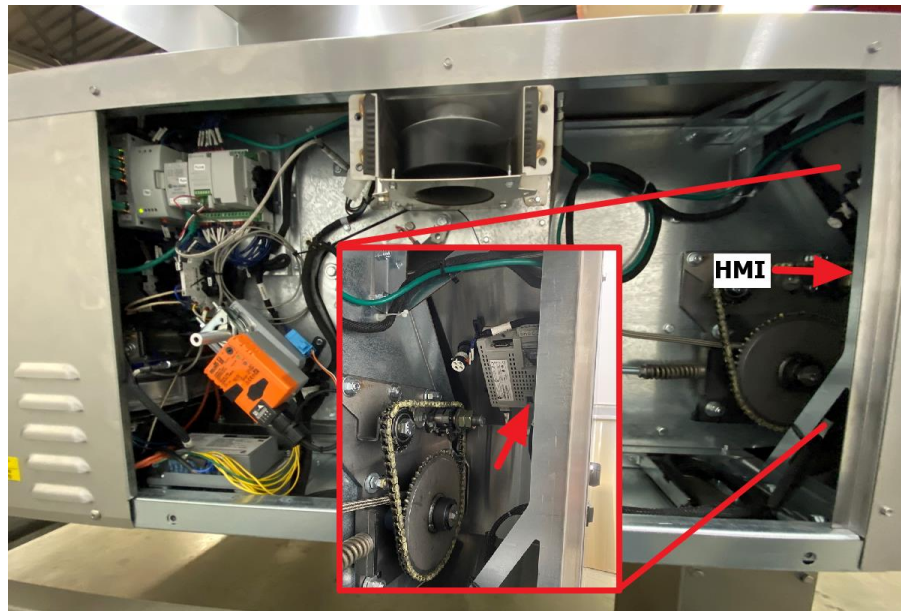
You may now remove the PLC and replace it for the new one

Perform step 10 to step 6 backwards in order to reconnect everything back in place



## Step 10

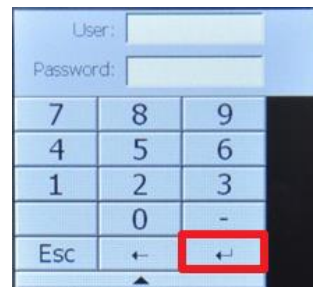
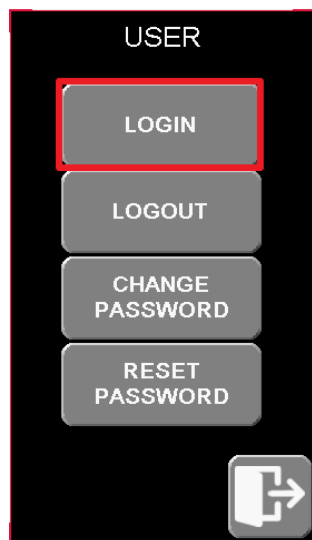
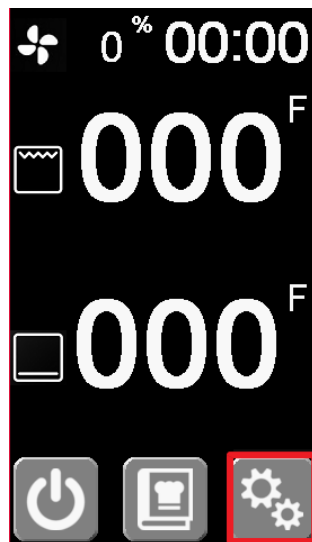
Now that the new PLC is installed in the unit and the software is ready we can proceed with an update



Put the Micro SD Card into the PLC. Insert the micro SD card in the side slot as shown below notch upside.

Put the USB Key into the back of the HMI

A.



# Step 11

Power on the oven

The PLC will update automatically if an SD card is inserted. It will read it and perform the update during the start-up screen process. You have nothing to do.

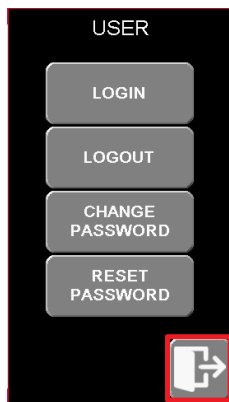
To update the HMI screen, you have to go in the factory screen parameter. To do it follow the instruction below;

A. First, login technician mode.

- User: **2**
- Password: **911**

Then press enter

B.



C.



# Step 12

B. Go back to the SYSTEM page by pressing on the door

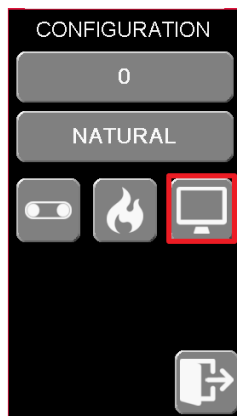
C. Press on the gears icon

D. Press on the monitor screen

E. You will now enter in the Factory HMI screen parameters

Once loaded press on “File Manager”

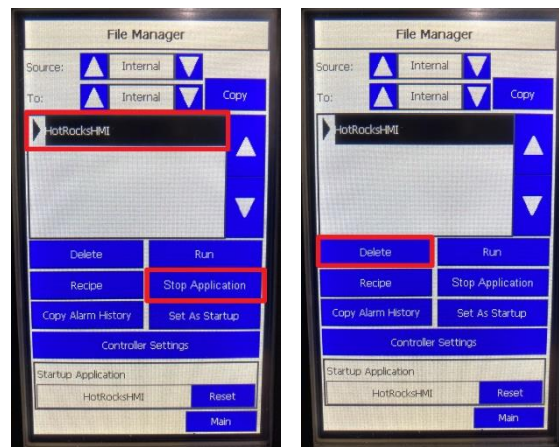
D.



E.



**F.**

**G.**


# Step 13

F. Select :

 -SOURCE: **INTERNAL**

 -TO: **INTERNAL**

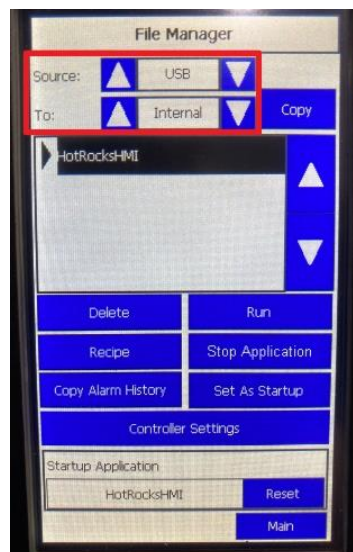
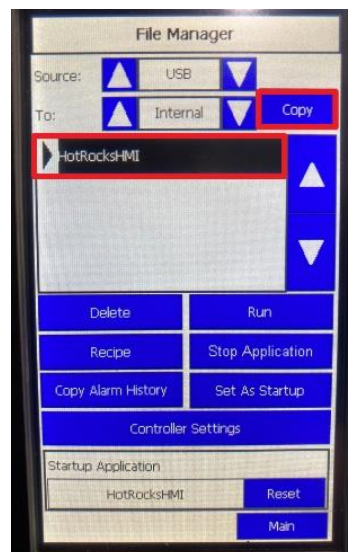
G. Select the program and “Stop application”. Afterwards select “Delete application”.

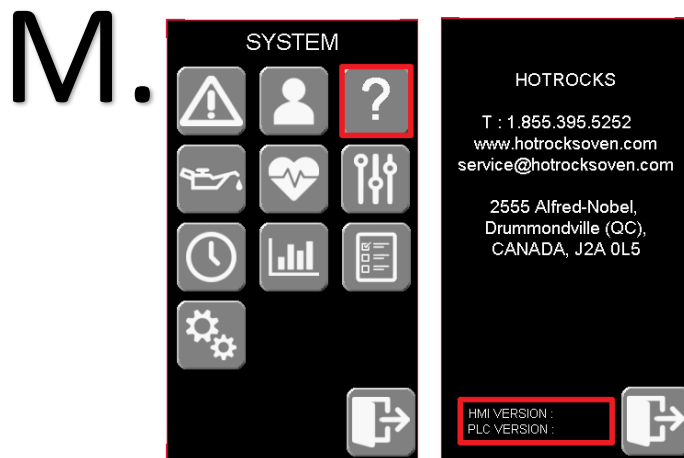
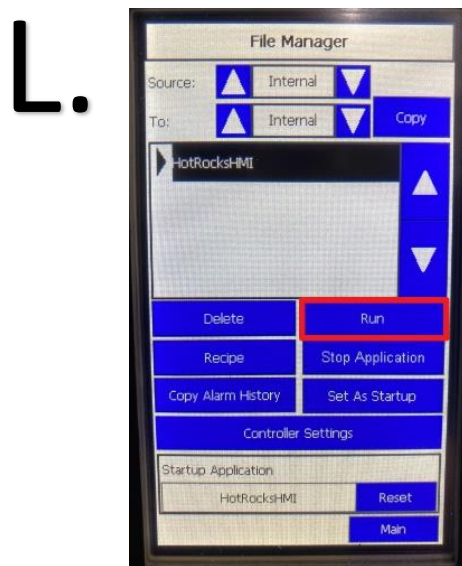
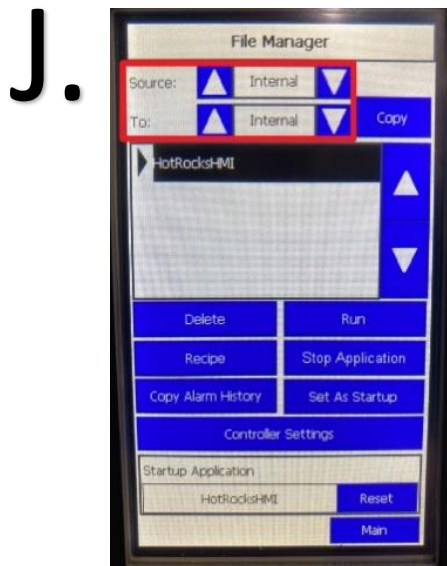
H. Select :

 -SOURCE: **USB**

 -TO: **INTERNAL**

I. Press on “COPY”

**H.**

**I.**




# Step 14

J. Select :

-SOURCE: **INTERNAL**

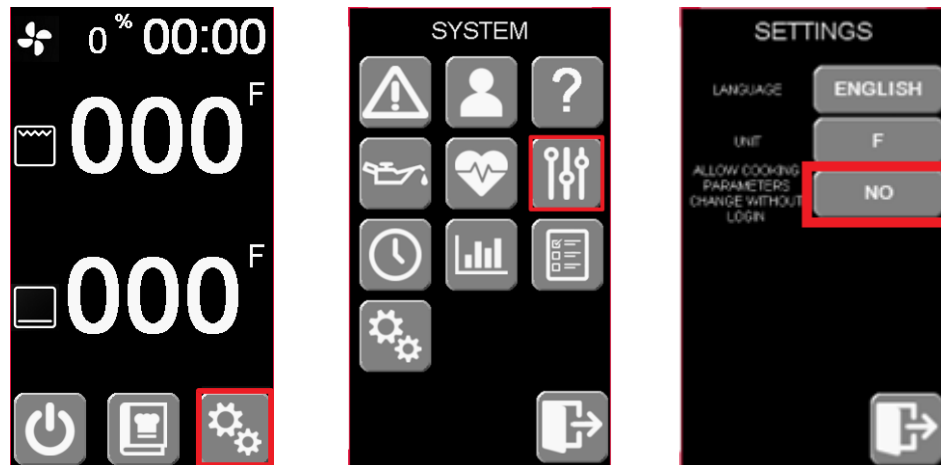
-TO: **INTERNAL**

K. Click on “set as Startup”. Make sure that the program now appears below in the “Startup Application” box.

L. Select “Run”

M. Go in to the question mark and verify that the versions displayed at the one that were intended for the update

1.

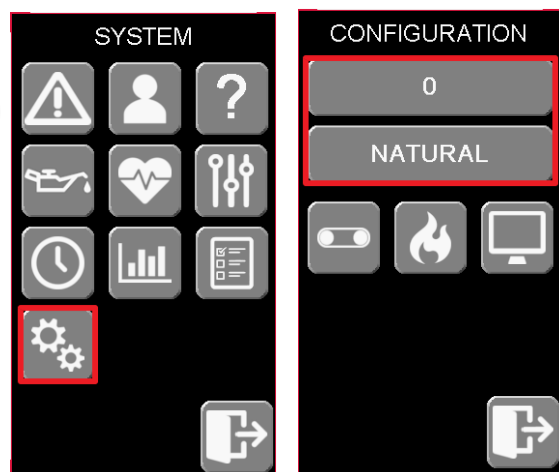


# Step 14

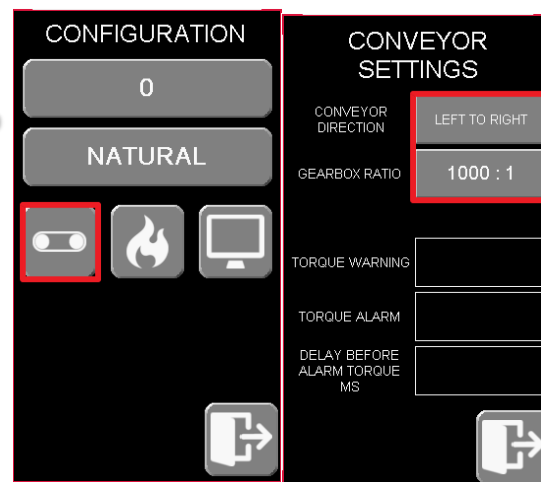
Lastly you will need to confirm the settings of the unit according to the current unit.

1. Go to the settings page and make sure to set the 3rd option to “Yes”

2.



3.



2. Go back and select the gear icons.

Then make sure the configuration fits the model number and gas type of the unit.

3. Lastly press on the conveyor icon. Make sure the gearbox ration is 1000:1 and that the direction of the conveyor fits the unit's configuration of entry and exit conveyor.