

How to replace the display (HR11-0056-A)





Step 1

Unplug the electrical connection. Make sure that the oven is not powered, also disconnect the gas supply

This is for your safety

Take off the side panels

You will be able to do so after moving the oven off the wall

To remove them you have to turn the latches by turning them a quarter of the way counterclockwise or by removing the screws depending on the oven's panel type

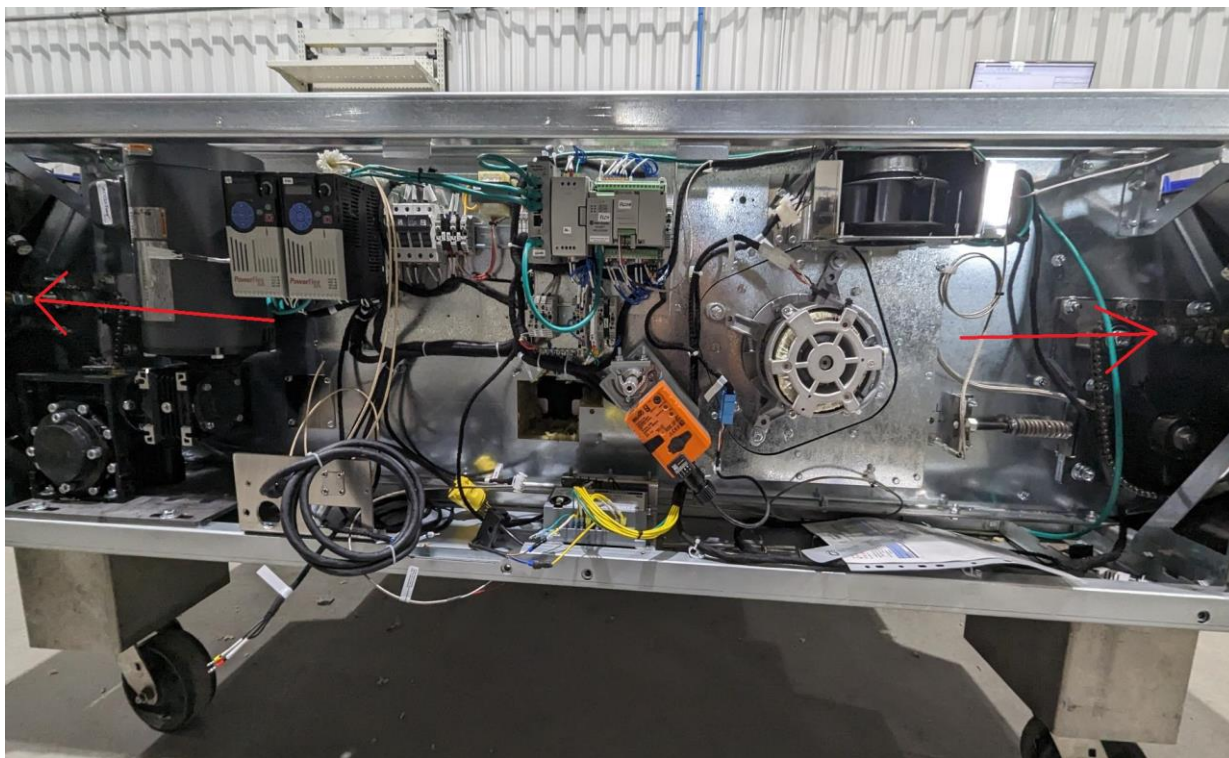


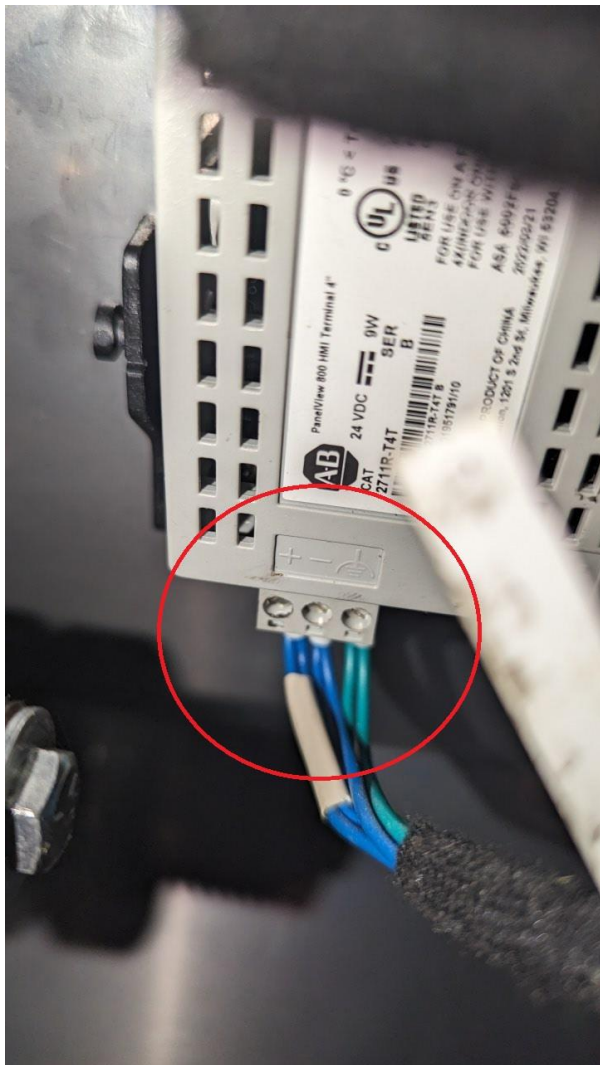
Step 2

You will have to locate the screen

It is located in the back corners of the unit

It will differ depending on the oven's setup





Step 3

You will have to unplug the wires connected to the HMI

There are 2 connections that needs to be unplugged

The Ethernet cable (green) on the side and the power connector on the bottom

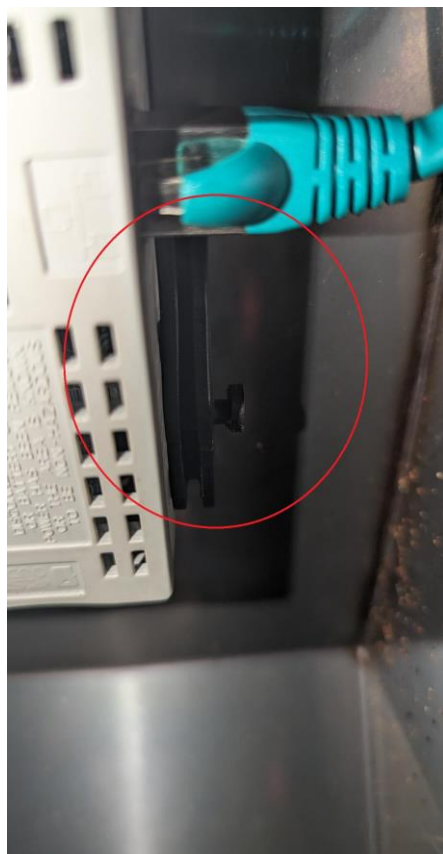
Step 4

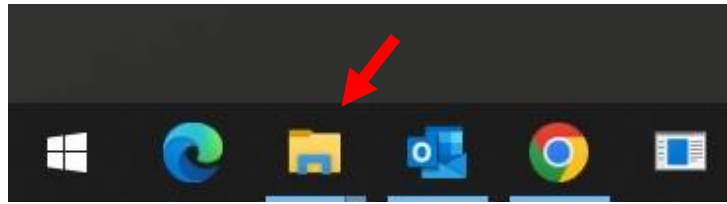
To remove the display out of the oven you will have to remove the 3 clips holding the display in place

To remove them you will have to rotate them so they point downward

Then you will have to slide them to the middle of the display when its done you can simply remove them and remove the display

You can now install the new HMI





Step 5

Verify the files in the SD and USB card

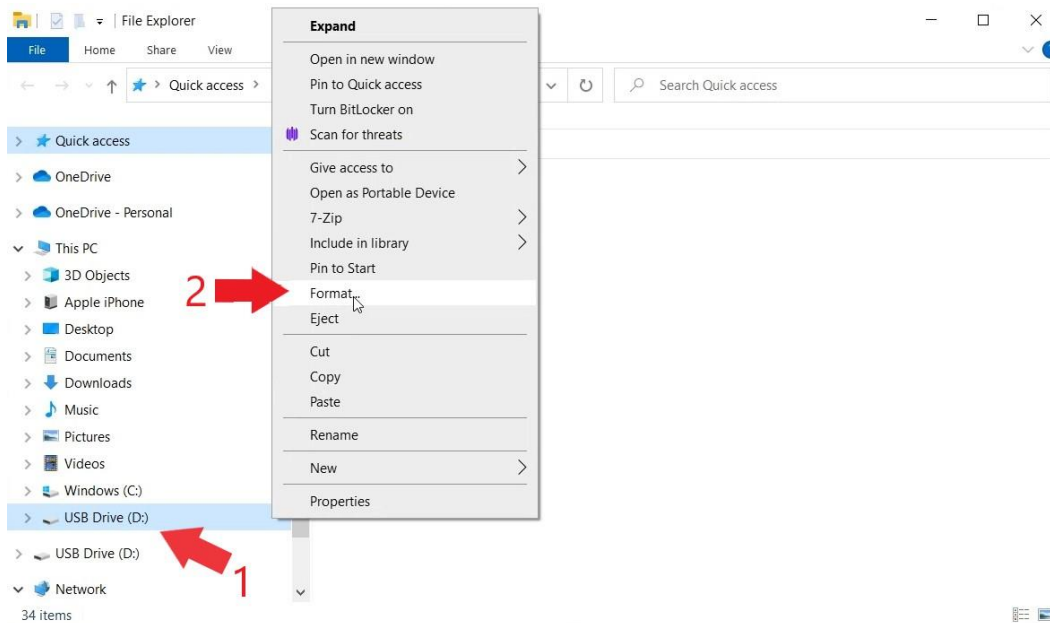
Use a PC to sort the files on the SD card and keep only the correct ones on the USB key

First, insert them into your computer
Then you must have the USB key and microSD card formatted to FAT32 To do this, follow the instructions below

Click on the FILE EXPLORER icon near of the Windows ICON

1 - Find your USB Drive on the left menu. Usually it's the letter (D:)

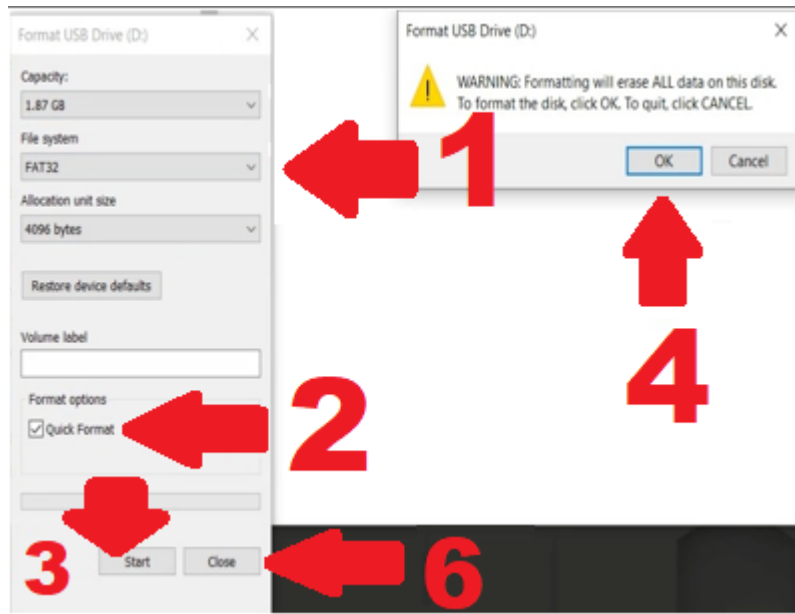
2- By clicking the right mouse button, a menu of options appears. Select the FORMAT menu



Step 6

In the FORMAT menu

1. Make sure FAT32 has been selected from the drop-down menu
2. Check the box “QUICK FORMAT”
3. Click START
4. Click OK
5. After some time, a window will appear to indicate that everything is complete Click OK
6. To exit the FORMAT menu, click on CLOSE
7. Get the latest software version on the website. (Google Chrome was used for the walkthrough)
<https://hotrocksoven.com/downloads/>
8. Click on the icon **Gen 3 latest software version**
9. A box appears in the left bottom corner, click on the arrow to see the menu
10. Click on OPEN



Step 7

Put the USB in the port of your PC

1- Click on the FILE EXPLORER icon

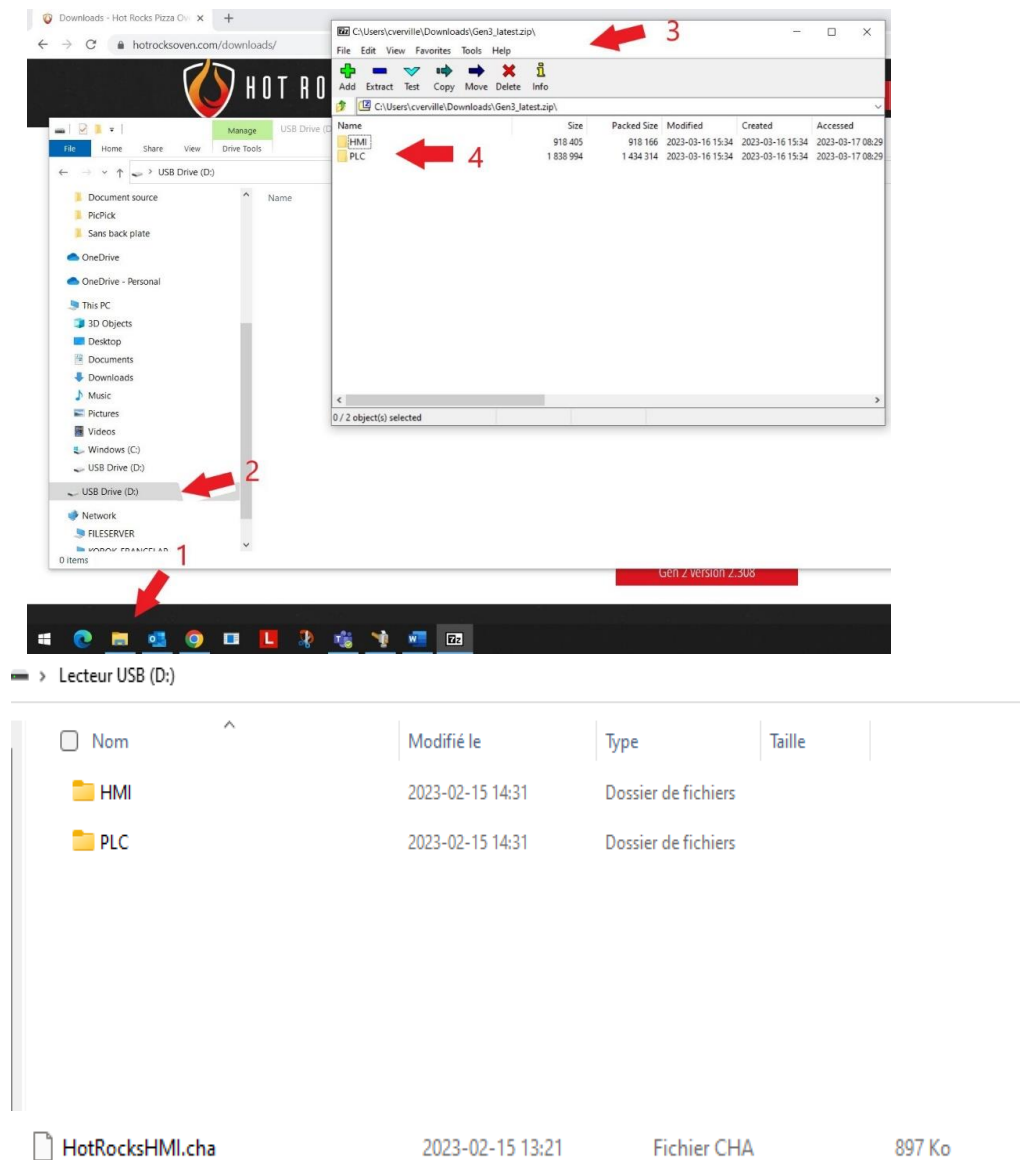
2- Select the USB Drive

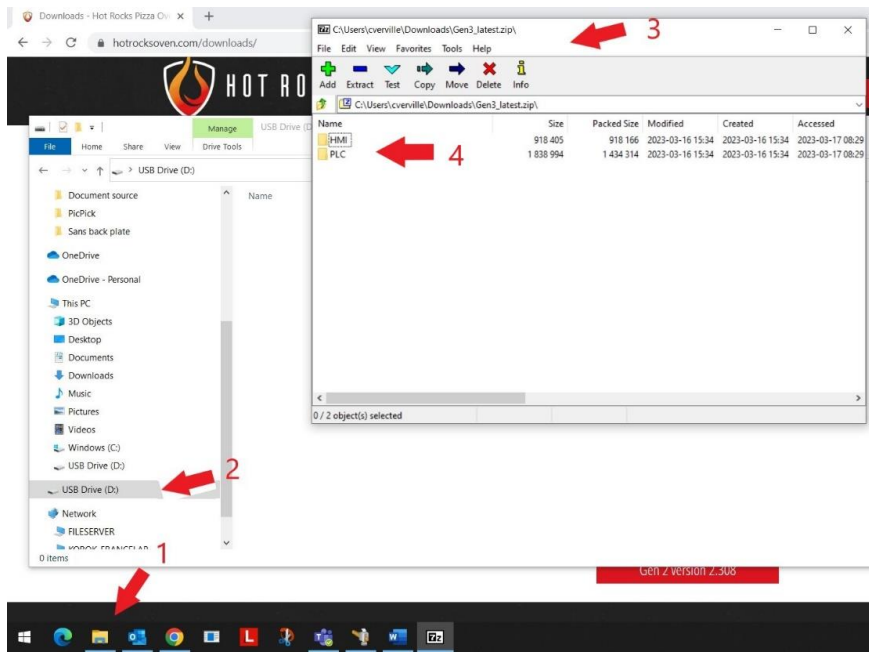
3- Select the previously opened window of the latest version of the program file

4- Double click on HMI to see the file to put on USB Key as depicted on the side

← This is the documents you would have if you had a preprogrammed USB

← This is the document you should have in your USB thumb stick after modification





Step 8

Repeat Step 5 & 6 to format the SD card, note that it **won't** be necessary to download the program a second time

1- Click on the FILE EXPLORER icon

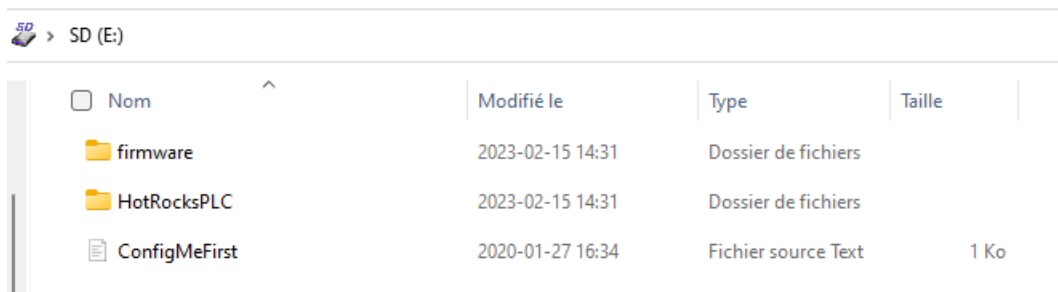
2- Select SD Card

3- Select the previously opened window of the latest version of the program file.

4- Double click on the PLC folder to see the files that you will need to upload on the microSD card

5- Select and drag all the files and folder into the SD card directory as demonstrated with the picture

← This is what is required in your SD Card

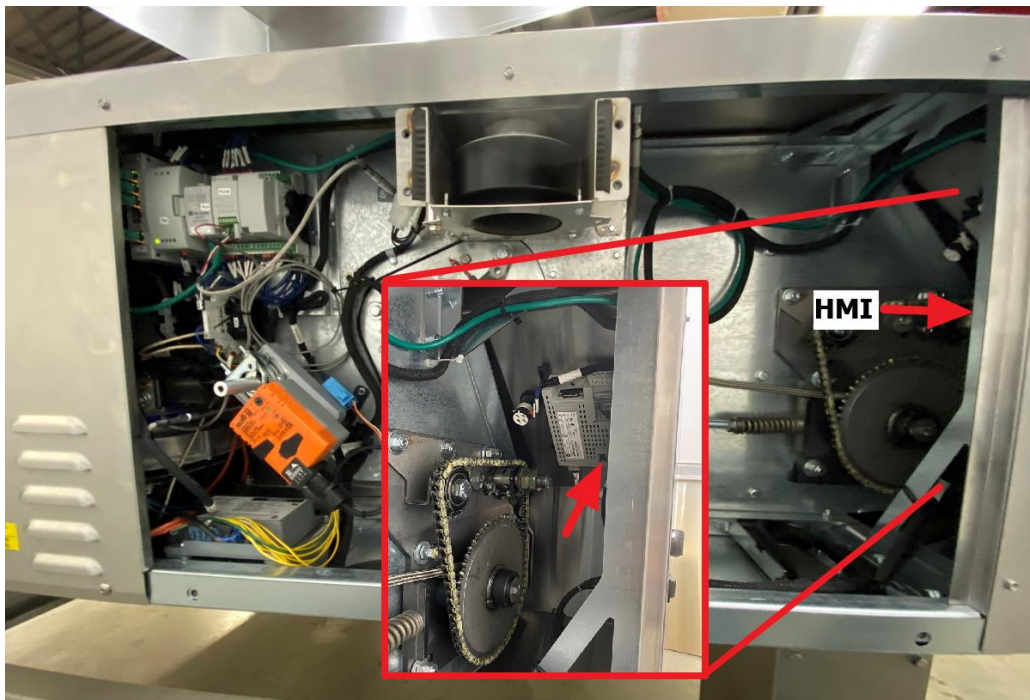
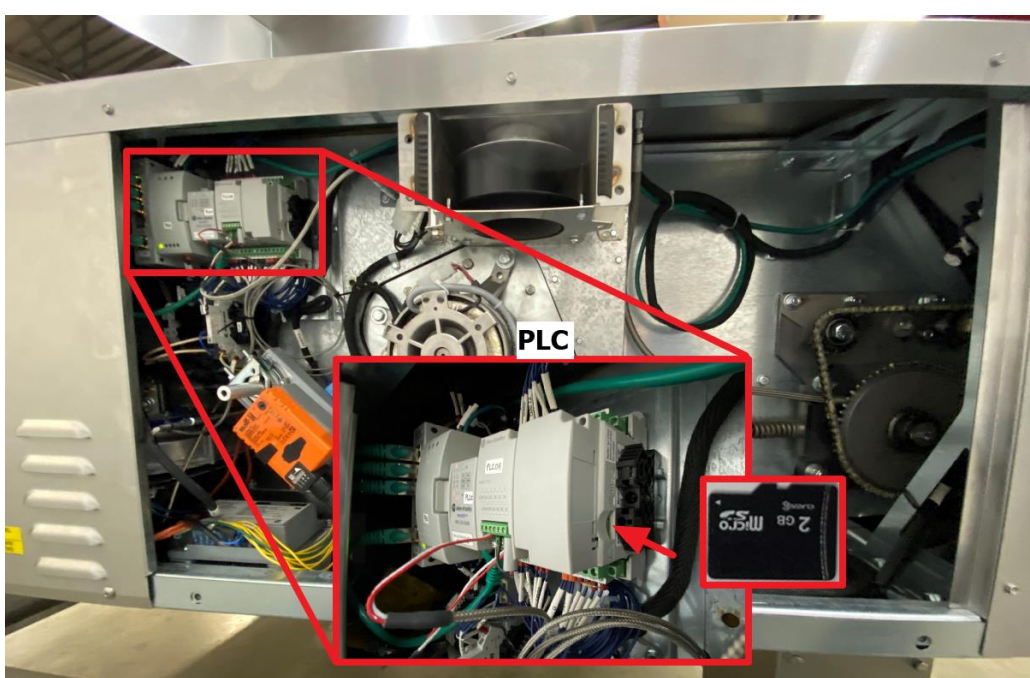


Step 9

Now that the new HMI is installed in the unit and the software ready we can proceed with an update

Put the Micro SD Card into the PLC. Insert the micro SD card in the side slot as shown below notch upside.

Put the USB Key into the back of the HMI

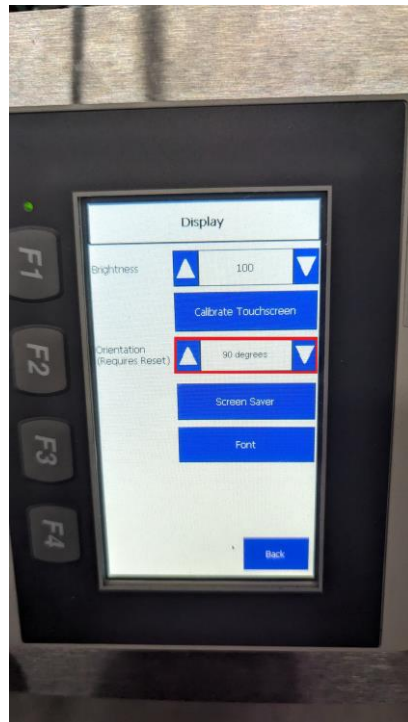
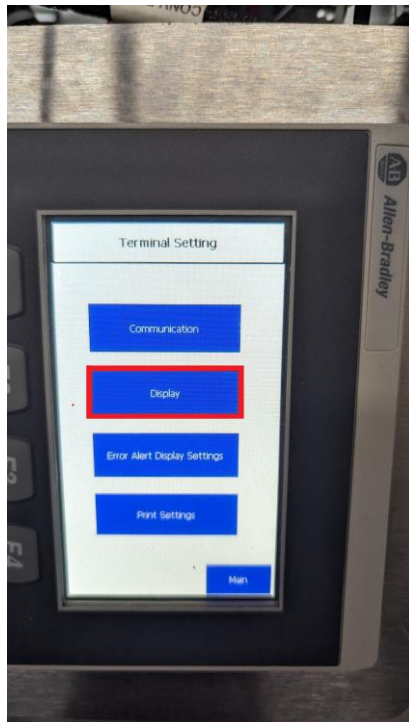


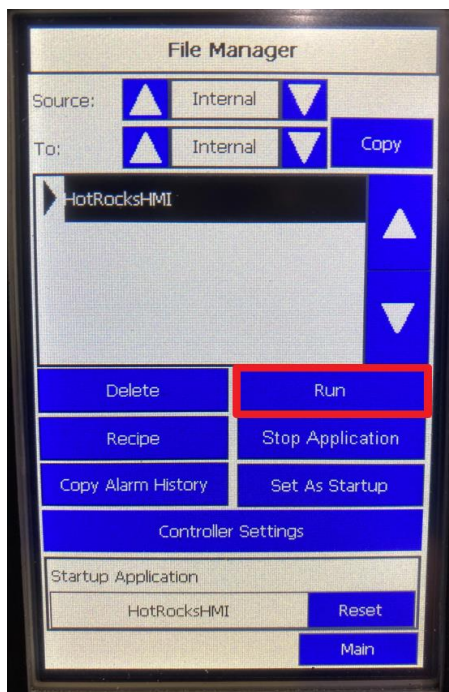
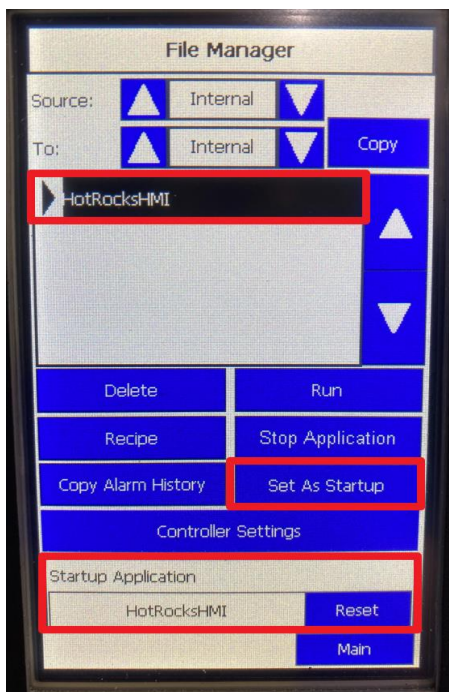
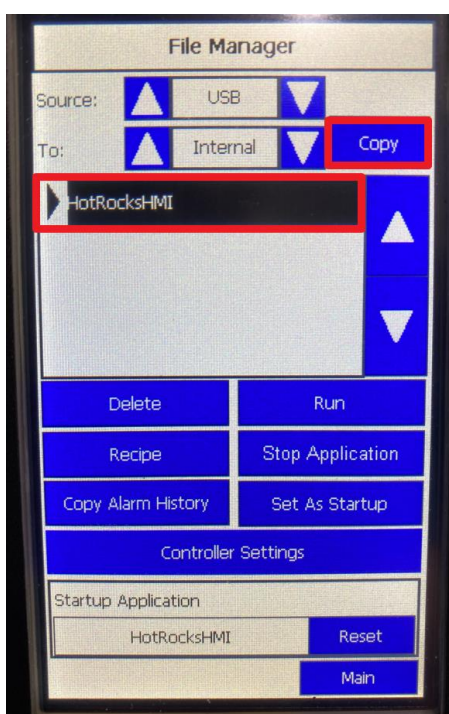
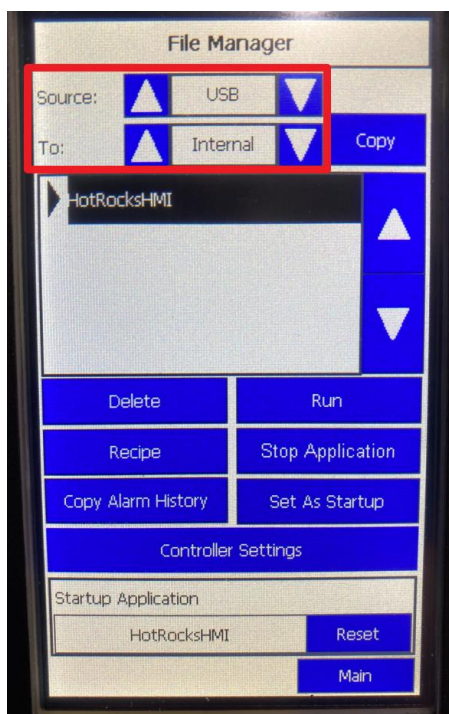
Step 10

Now that you are starting up the oven you will see the setup screen

You should start by setting the screen orientation

You can do so by going to "terminal setting" then "display" and then setting the screen on 90 degrees





Step 11

HMI Screen Update

In the Factory HMI screen parameters

Click on « File Manager »

Then select; **SOURCE: USB**

TO: INTERNAL

Select program and click on “COPY”

Select; **SOURCE: INTERNAL**

TO: INTERNAL

Select program and click on “SET AS STARTUP”. Be sure that the program now appears below in the “Startup Application” box. At the end select “Run”

Step 12

Turn off the oven

Remove the USB key and SD Card

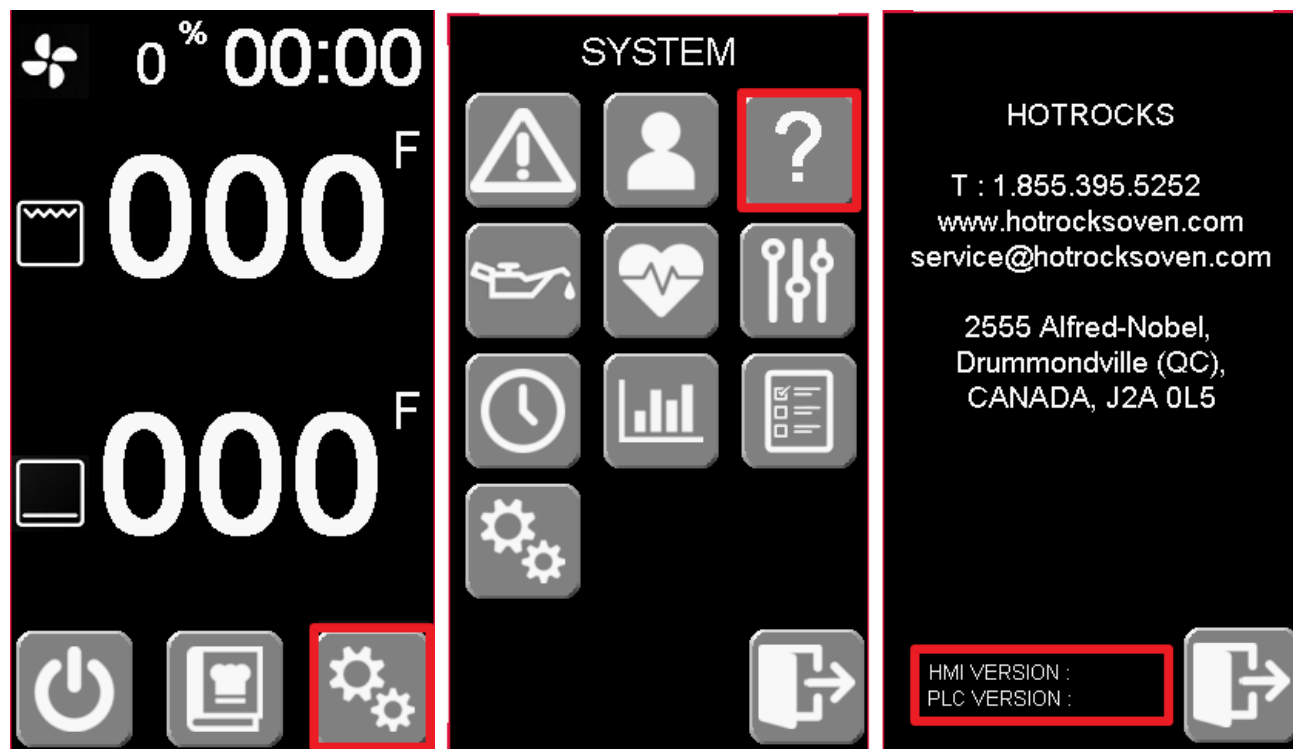
Turn the oven back on

Verify if the PLC and HMI version has been updated

To do so go in the “INFO / ABOUT” page to verify that is the latest version number shown.

HMI and PLC version must be the same.

If the versions are correct, then press on the door on the bottom right once





Step 13

Re-configure the oven

Select the person icon

You have to login as User Technician to setup all parameters

Press **login**

The technician user and password is:

- USER = **2**
- PASSWORD = **911**

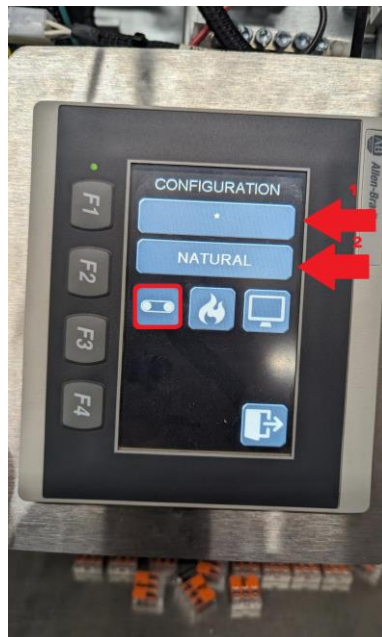
After you've entered the credentials press **ENTER**

After you've done those steps you will be logged in and back on the "Login & Logout" page

You can simply press the **Door** icon



Step 14



In the system menu you will have to click the **GEAR** icon to access the configuration menu

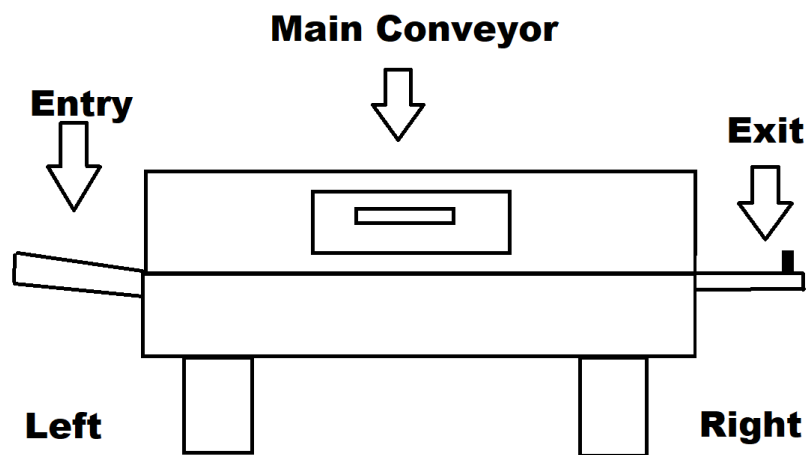
First you will set the Model (You will find the model on your oven's nameplate the nameplate is in the back of the oven on the right)

Then change the Gas option underneath the model selection (Natural or Propane)

And finally change the conveyor direction:

To access the conveyor setting menu you simply have to press on the small conveyor icon

(The left is where the entry is indicated on the example pictured to the left)



The entry conveyor will go over the stones and the exit conveyor will have a stopper