

How to replace the Damper (HR11-0057-A)





Step 1

Unplug the electrical connection. Make sure that the oven is not powered, also disconnect the gas supply.

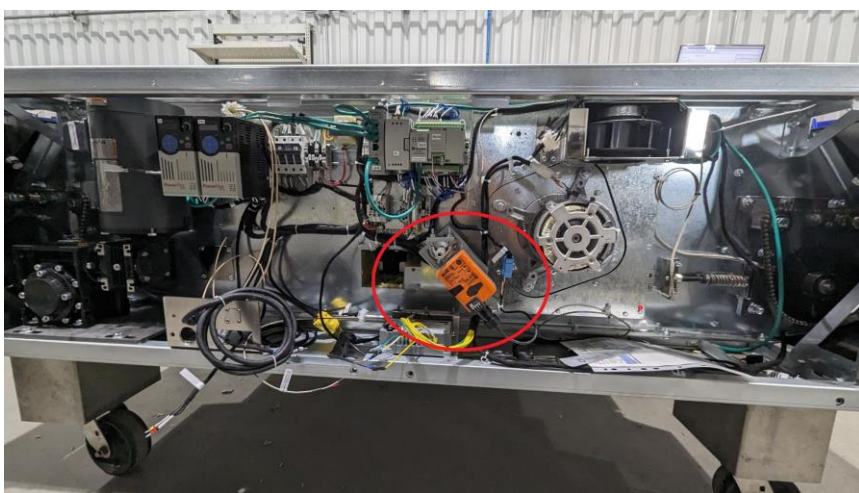
This is for your safety.

Take off the side panels.

You will be able to do so after moving the oven off the wall.

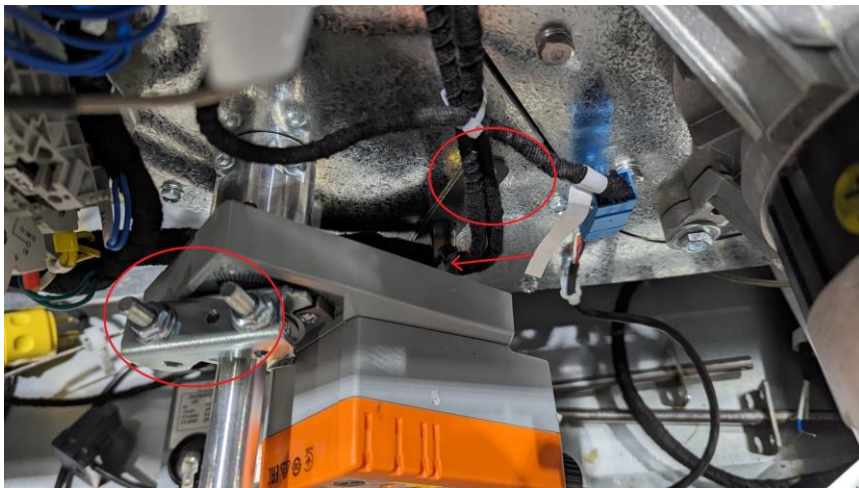
To remove them you have to turn the latches by turning them a quarter of the way counterclockwise or by removing the screws depending on the oven's panel type.





Step 2

Locate the damper.



There are 2 bolts on the bracket holding the shaft.

Loosen them until you can rotate the shaft on its own.

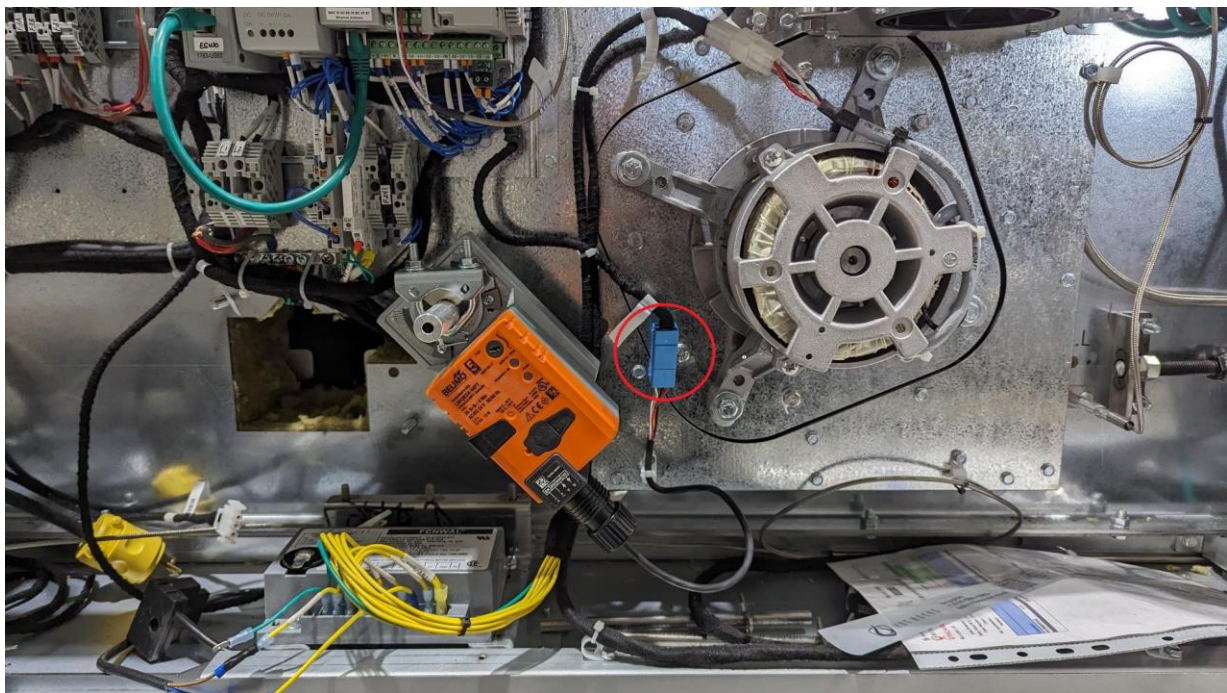


You will also have to remove the 2 bolts behind the damper.

They keep the assembly in place.

You will have to take them off.

Step 3



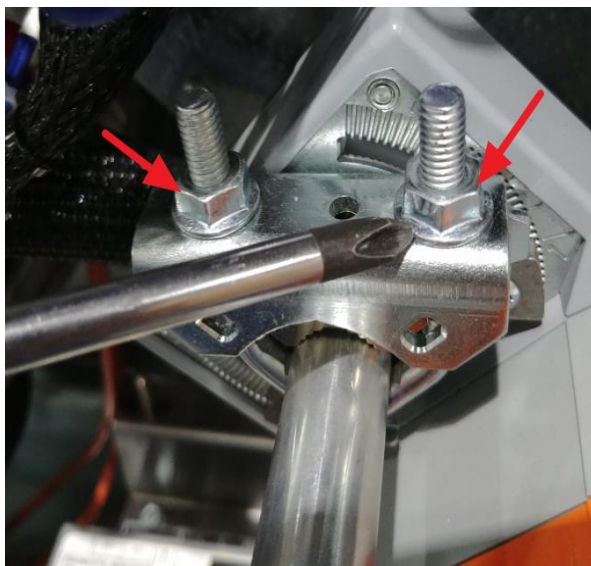
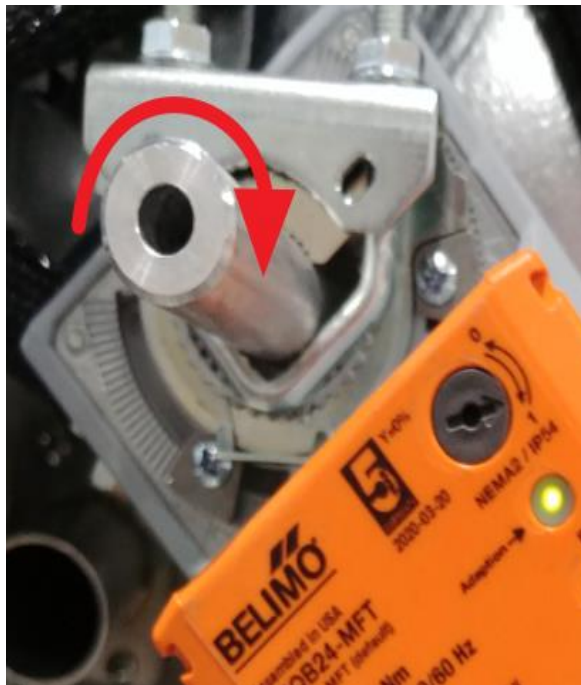
You can now unplug the damper
There is a blue plug. Its the one
you have to disconnect

After disconnecting the damper
you can now replace it with the
new one

Step 4

You can now calibrate the damper

1. Make sure the oven is powered off
2. Make sure the damper is in place, installed and properly secured.
3. Adjust the clockwise stopper (the one on the right) to maximum reach.
4. Hand turn the shaft fully in the clockwise position
5. Press the damper disengagement button and turn it clockwise completely until it reaches the stopper.
6. Tighten both nuts in place on the shaft.



Step 5

7. The 0% position is now calibrated.

8. Press the disengagement button (circled) and turn the shaft by hand (along with the damper attached to it) counterclockwise until the internal paddle reaches the end (You will hear a knock). Make sure that the left stopper of the damper is still free (not tightened).

9. Adjust the left stopper and tighten it in place.

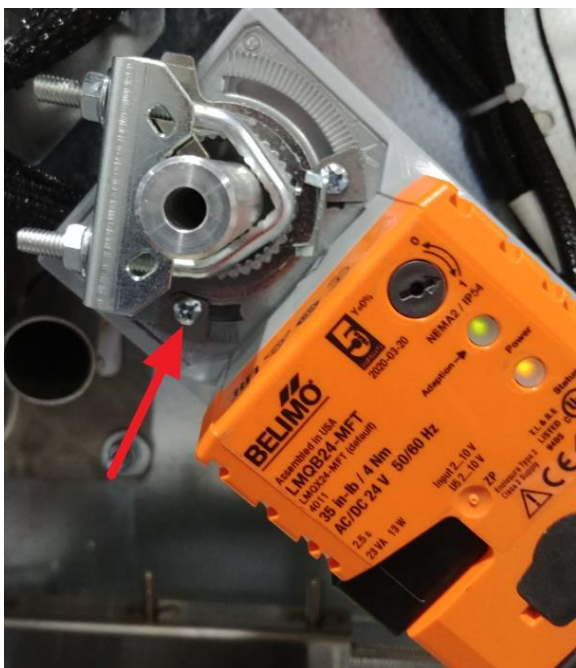
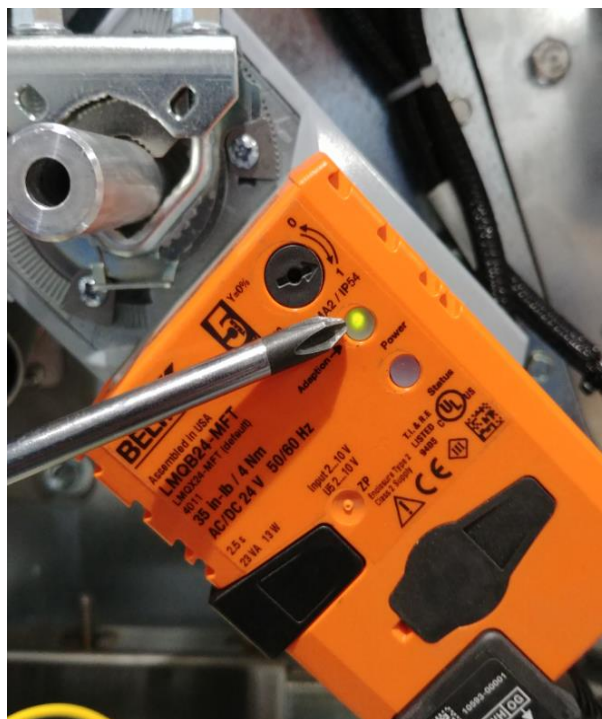
10. The 100% position is now calibrated.

11. Power on the oven.

12. Push the teach button « Adaptation » and hold it for 2 seconds or until the “status” light turns orange and wait.

13. The damper will do a 0 to 100% travel to record it’s maximum and minimum positions.

During the displacement, make sure nothing rubs.



Step 6

When the damper is calibrated you can do a test run by activating the oven's cooking cycle.

The damper should turn to a predetermined position (which is displayed on the left).

When you completed the verification you can simply put the side panels back in their place.

