

# How to replace the Ignition module (HR11-0067-A)



# Step 1

Unplug the electrical connection.  
Make sure that the oven is not  
powered.

This is for your safety.

Take off the side panels.

You will be able to do so after moving  
the oven off the wall.

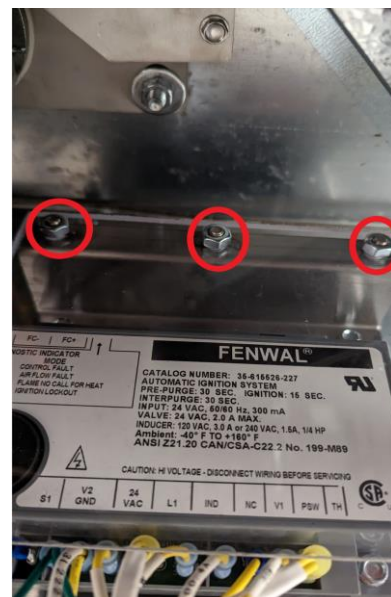
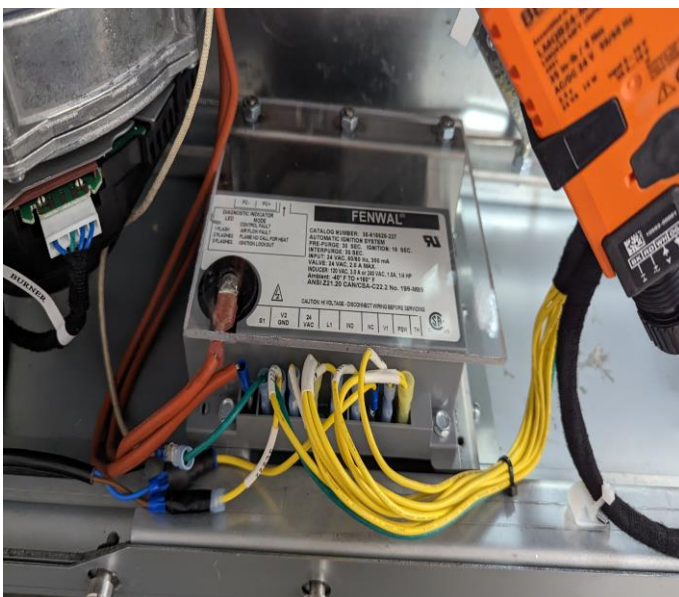
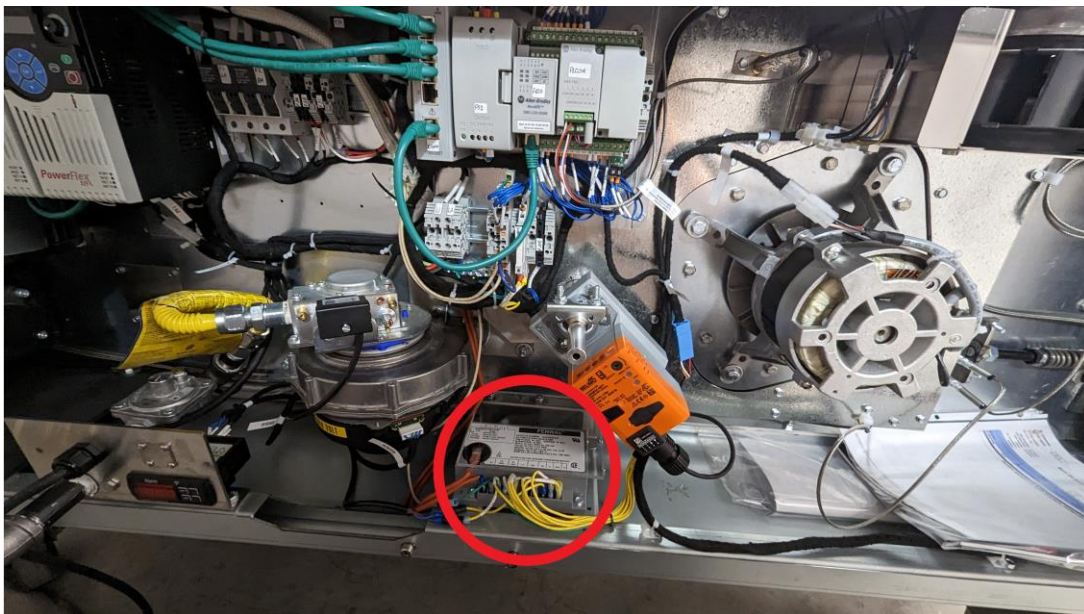
To remove them you have to turn the  
latches by turning them a quarter of  
the way counterclockwise or by  
removing the screws depending on  
the oven's panel type.



## Step 2

Locate the ignition module.

Then take off the protective glass by removing the 3 nuts holding it.



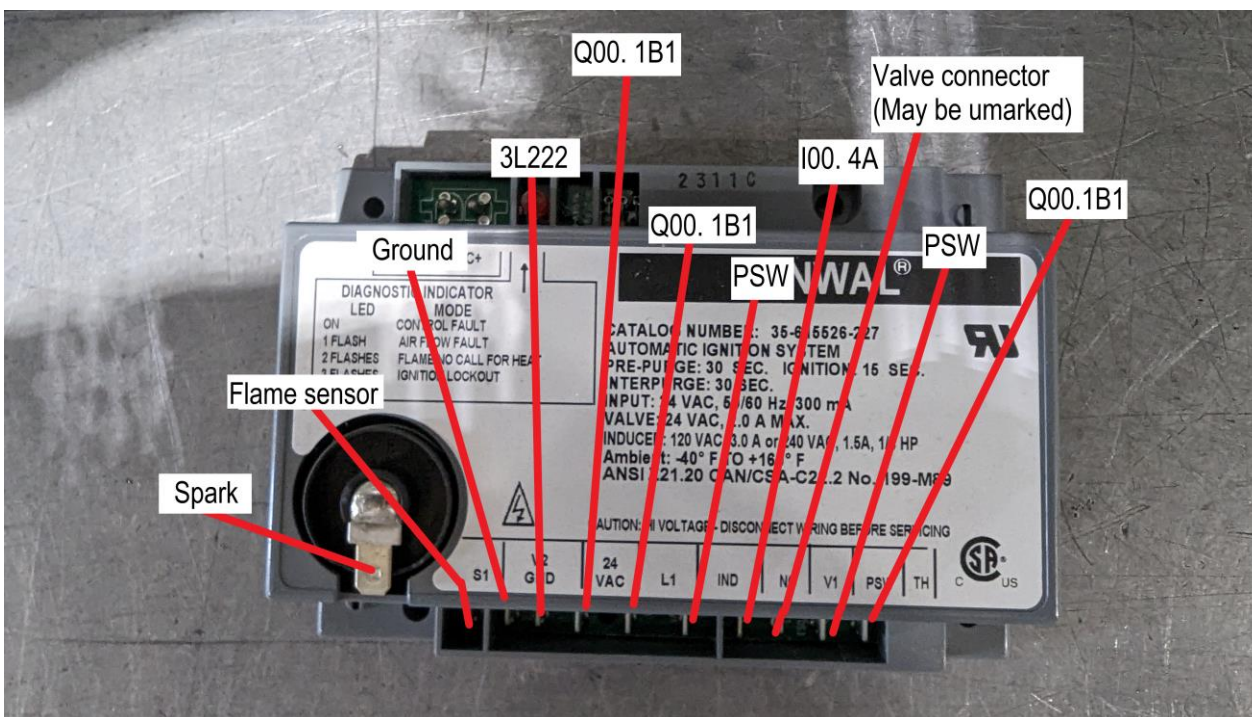
# Step 3

After removing the protective glass, note every wire connection.

The wires should be labeled.

After everything is noted unplug the wires

\*Note that the ground wires are green.



## Step 4

Now that the ignition module is unplugged you can take it out of the oven by unscrewing the 2 screws at the front.

After taking it out you can replace it with the new one and plug it again using the informations noted in the previous steps.

