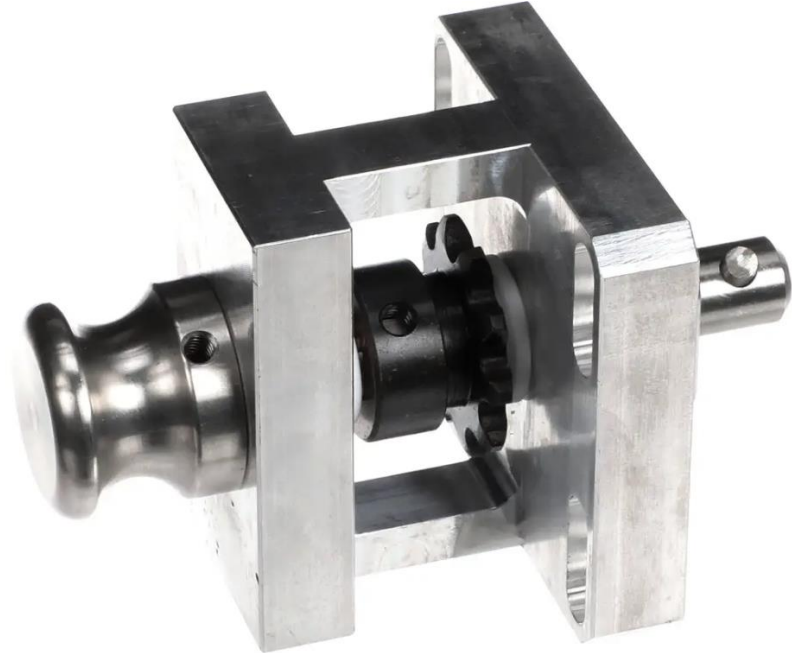


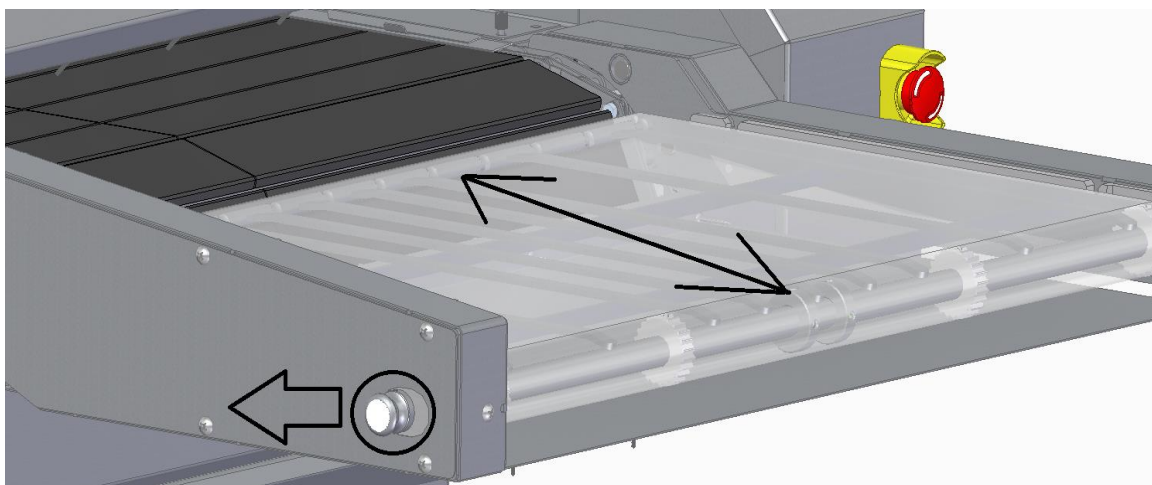
# How to replace ( HR11-0096-A)



# Step 1 Side Conveyor

Start by removing the mesh conveyor

Remove the crumb tray below the conveyor and take off the bolts and the conveyor end

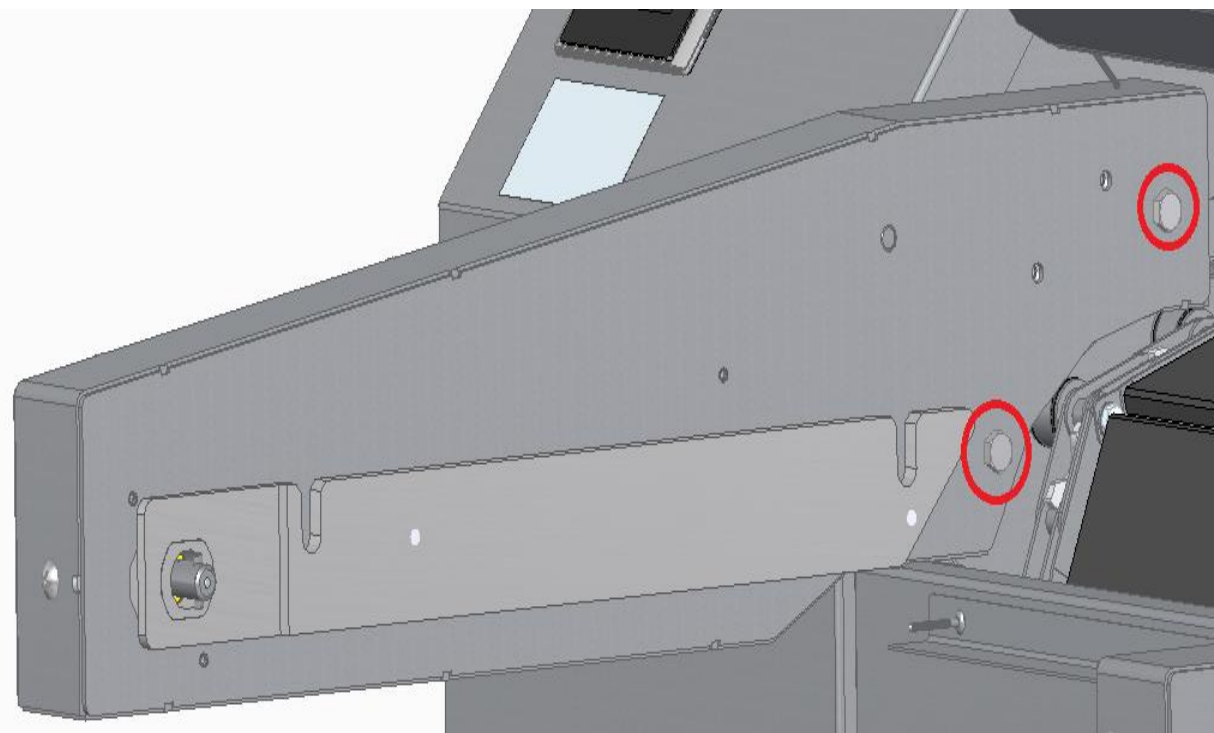


Then disengage the knob

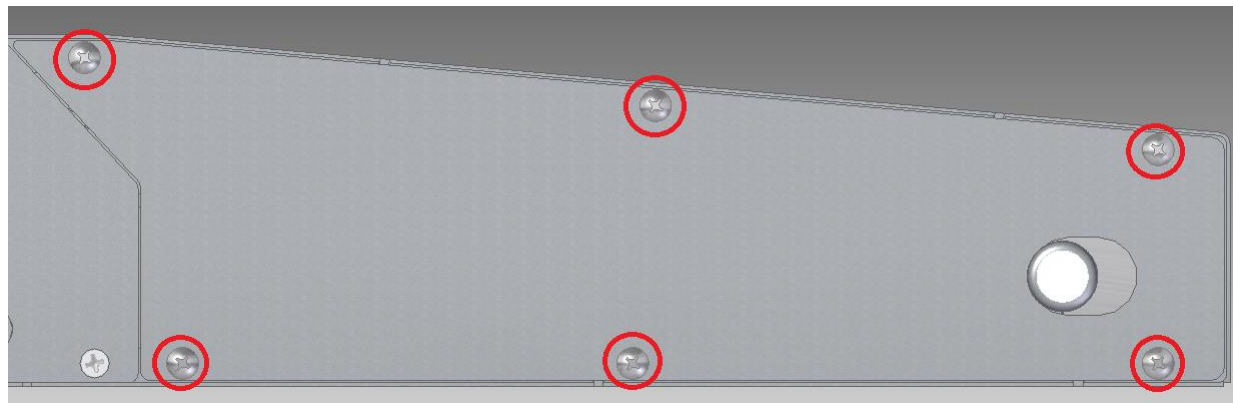
(Please note, you may need to roll the mesh back and forth until you find the center where you may pull on it)

## Step 1.2

Undo the bolts and pull to remove the arm

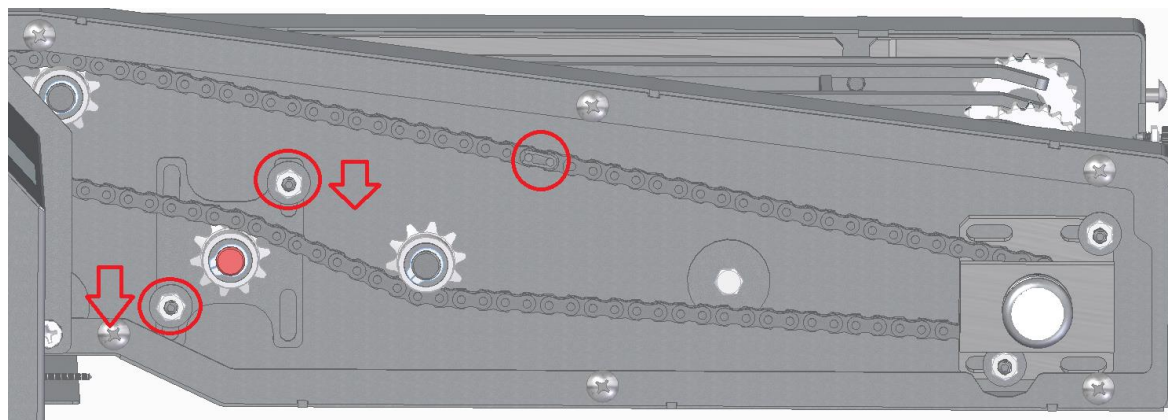


## Step 2 Opening the arm panels



After the arm is removed you can take a philips head screwdriver to take out the screws that holds the stainless steel plates

## Step 3 Arm chain removal

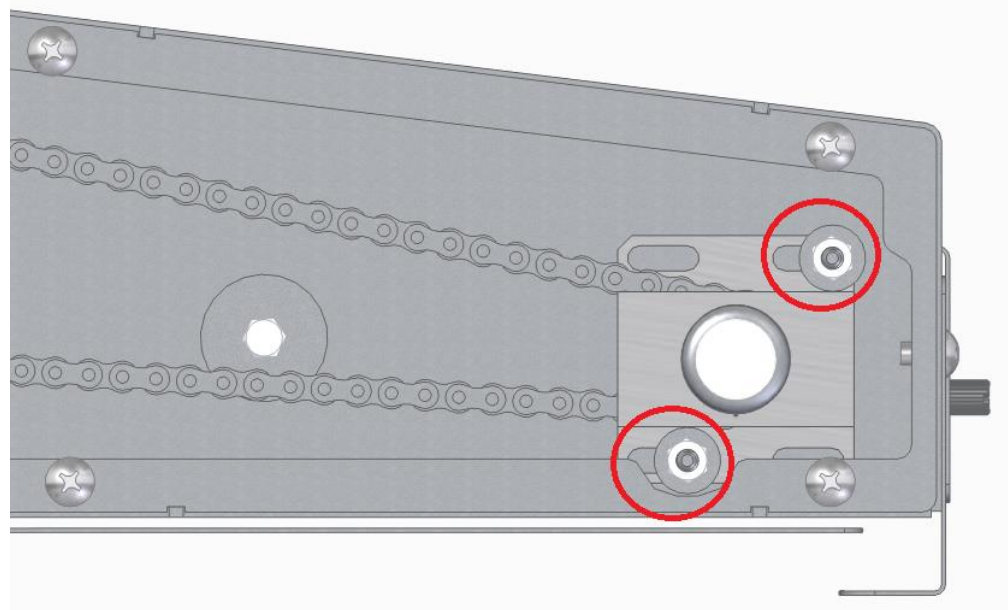


Loosen the 2 bolts on the tensioner and move in order to release tension on the chain

Then located the master link and disassemble it in order to open up the chain and turn the knob to remove the chain from the block

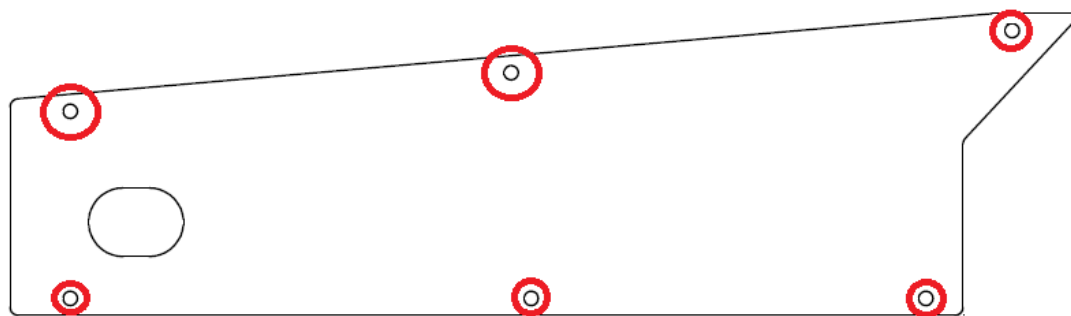


## Step 3 Arm Knob removal



Remove the nuts (7/16") and you will be able to remove the part

After replacing it with the new one you may follow the steps backwards to put the oven back together.



Please note, because of the way heat will warp the panel of the arm with time, you may have to use a drill bit to widen the holes where the crews fit in in order to put it back.