

How to replace the thermocouple



Step 1

Unplug the electrical connection.
Make sure that the oven is not
powered.

This is for your safety.

Take off the side panels.

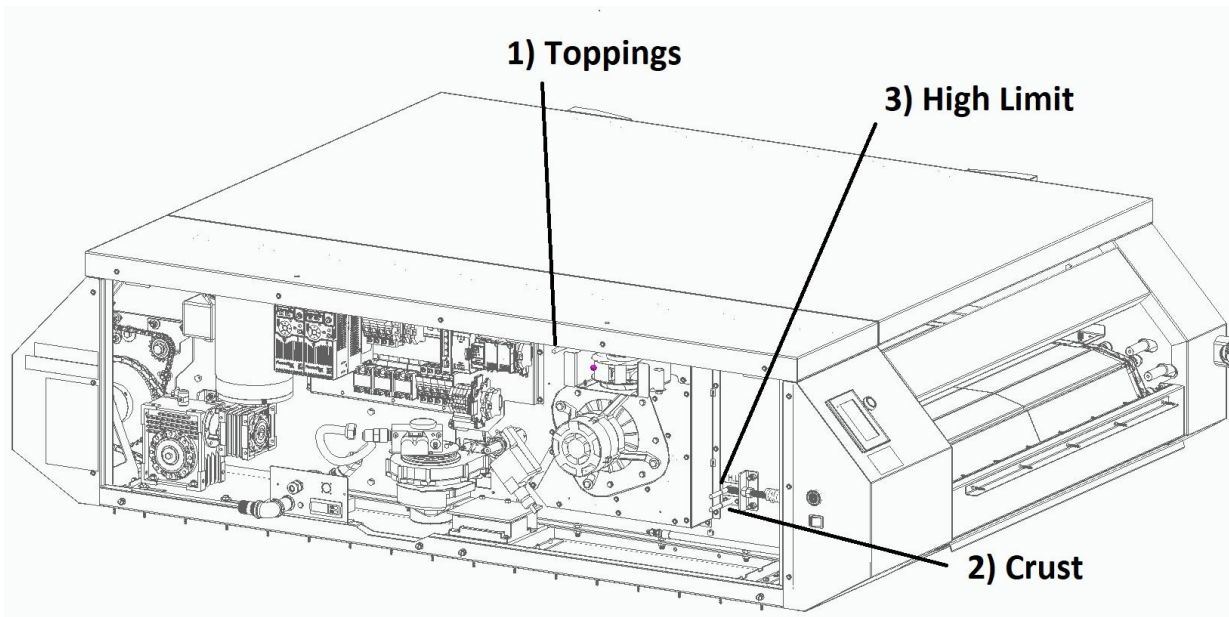
You will be able to do so after moving
the oven off the wall.

To remove them you have to turn the
latches by turning them a quarter of
the way counterclockwise or by
removing the screws depending on
the oven's panel type.



Step 2

Note that in the Hot Rocks oven there are 3 thermocouples :



- 1) Toppings (HR11-0077-A)
- 2) Crust (HR11-0076-A)
- 3) High Limit (HR11-0076-A)

Please note all the thermocouples are the same type (Type “J”) only the wire length differs

Step 3



After locating the thermocouple you would like to change you must sever the silver tape in order to be able to pull it out

Then place the new one back in, push it all the way in, there's a point where it won't go in any further.

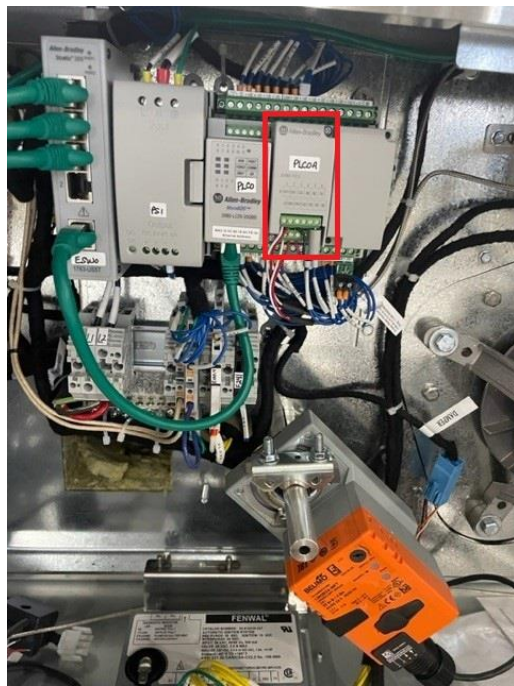
Finally put some aluminium tape back onto the junction of the thermocouple and it's support.

Step 4

The last step will be to wire the new thermocouple back in their place.

For the toppings and crust thermocouples you will need to find the PLC0A. (displayed in the picture)

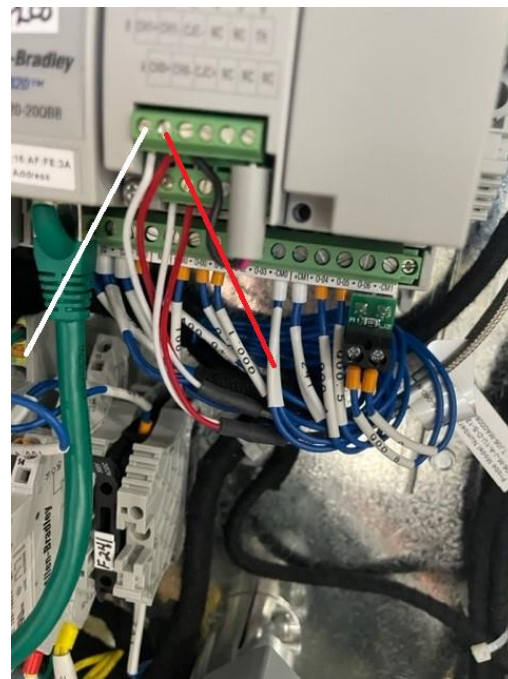
- 1) The toppings thermocouple will connect to the CH0+ & CH0-
- 2) The crust thermocouple will connect to the CH1+ & CH1-



1)



2)



Step 5

3) The high limit thermocouple will connect to the 1 & 2 contact on the high limit

Whenever the thermocouple is replaced you may put the panels back in place.

