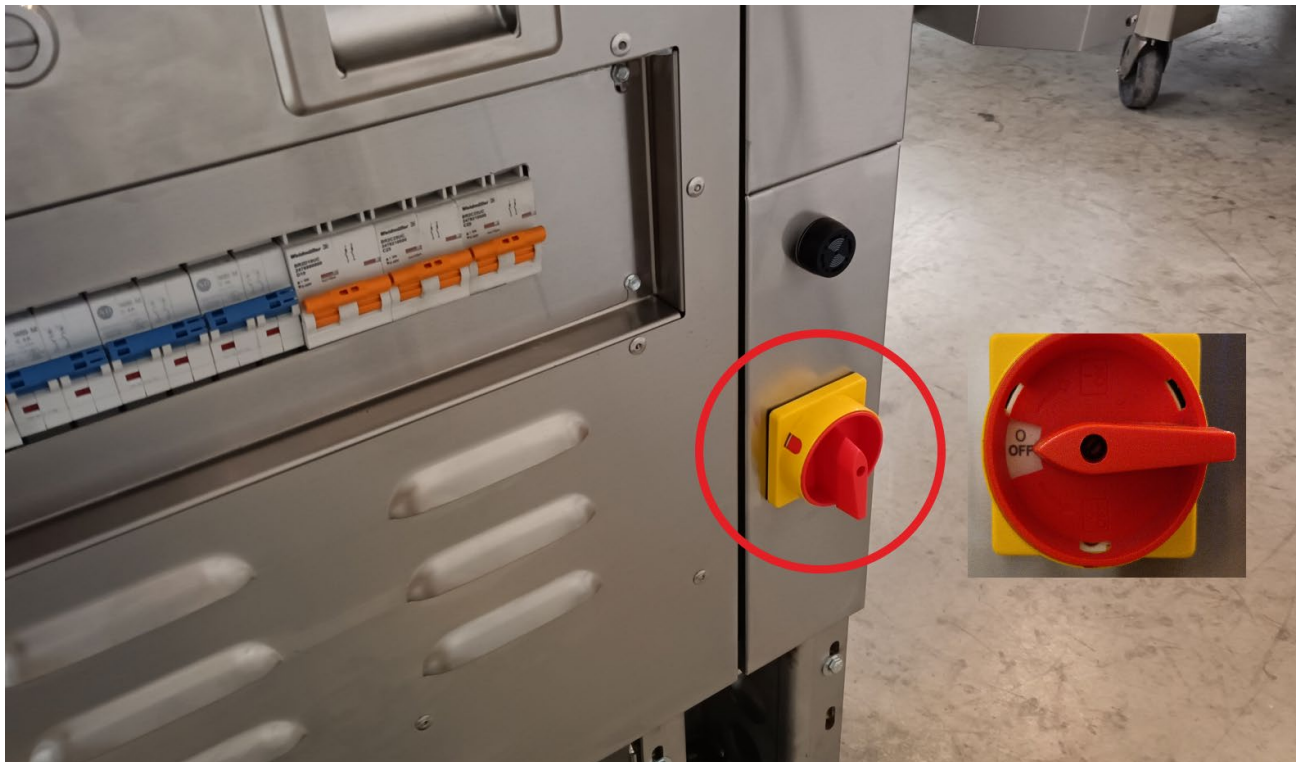


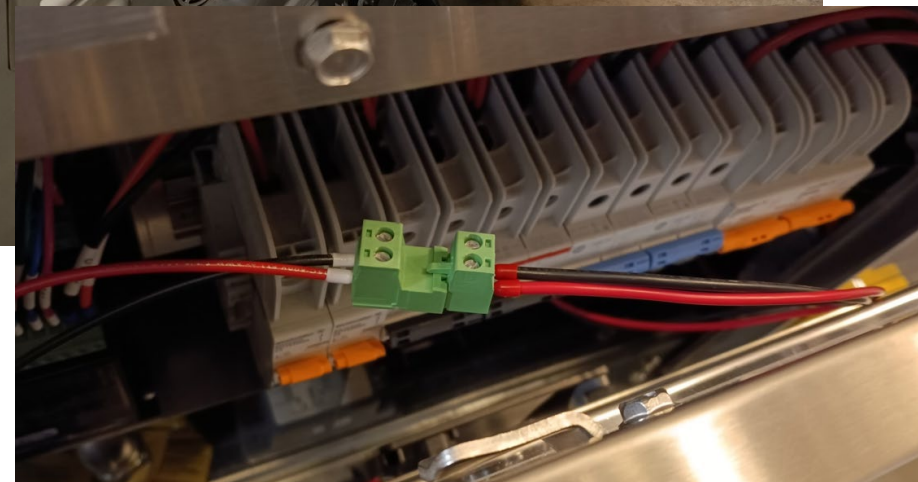
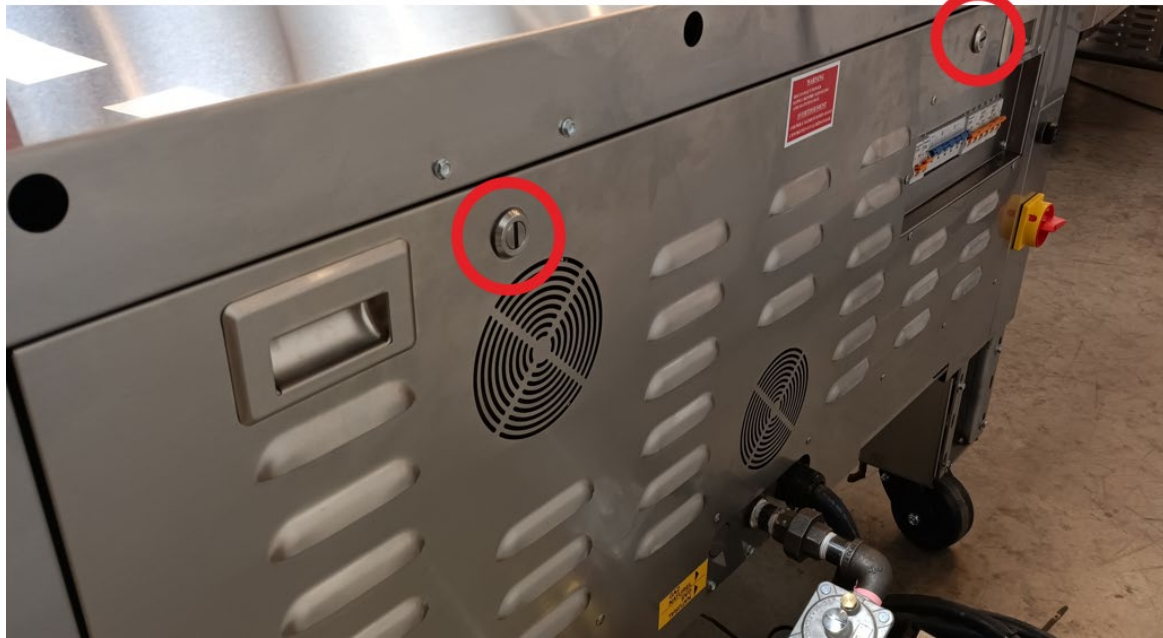
VOLCANO HOW TO REPLACE CARRIER BOARD FOR NEWER VERSION



Step 1

Shut down power with the rear main switch

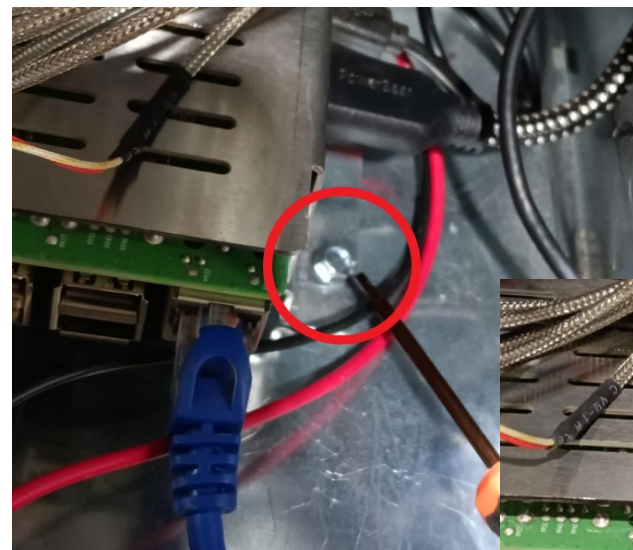
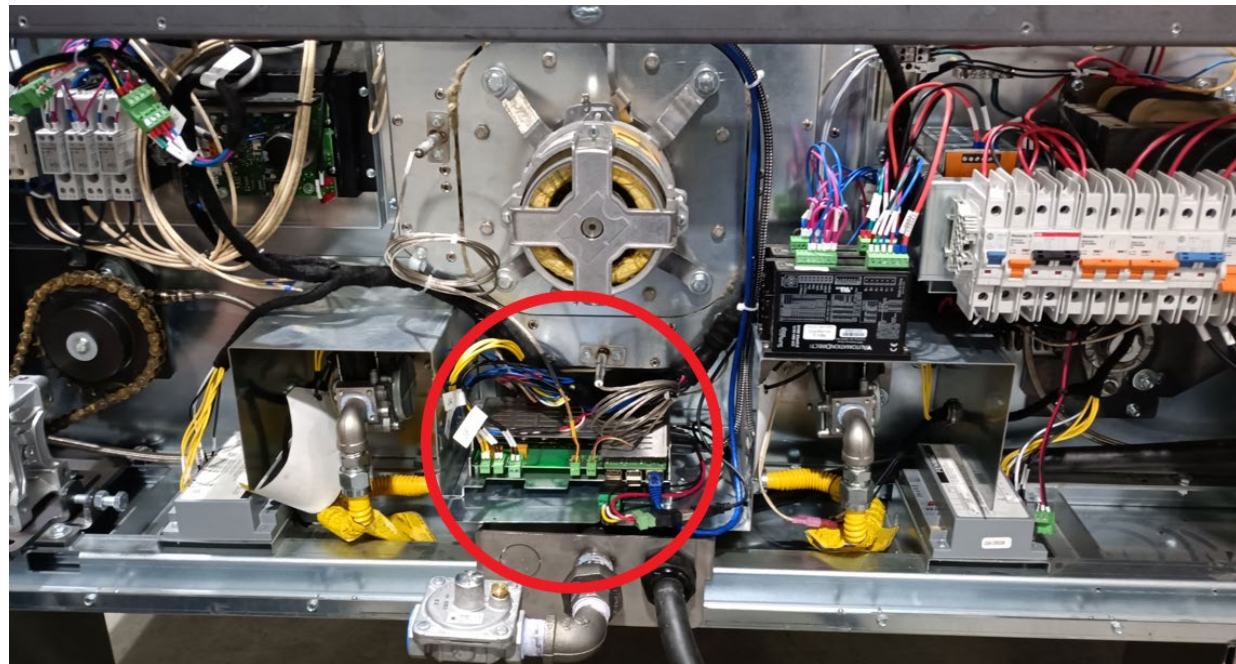
Disconnect power plug from the wall



Step 2

Remove rear panel.

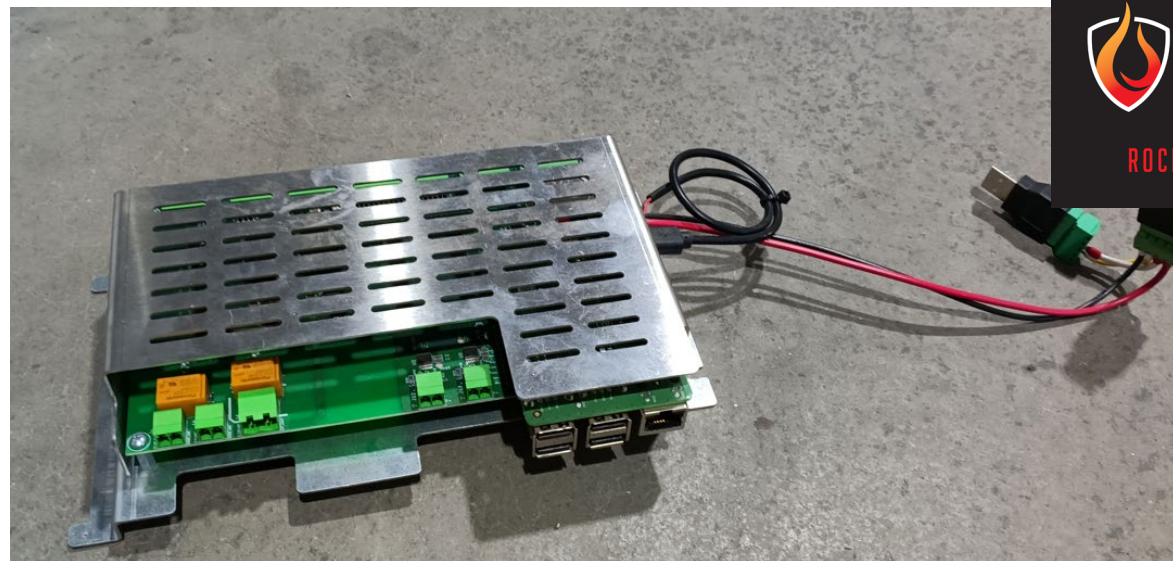
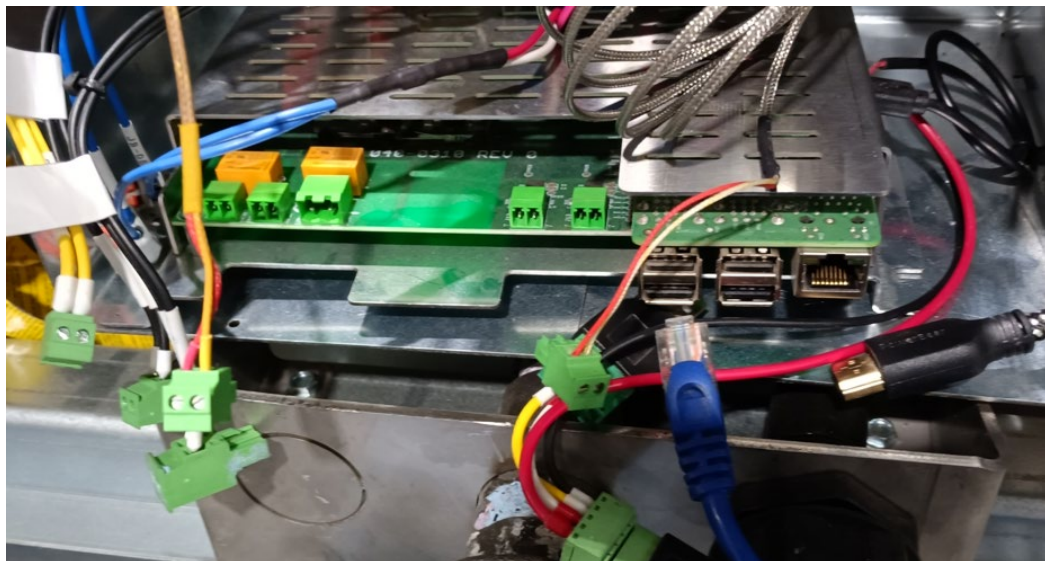
*****WARNING***** Slightly open the top and disconnect cooling fan plug before removing the rear panel completely.



Step 3

Locate the electronic control board

Unscrew the metal screw holding it in place



Step 4

Unplug all connectors from the board

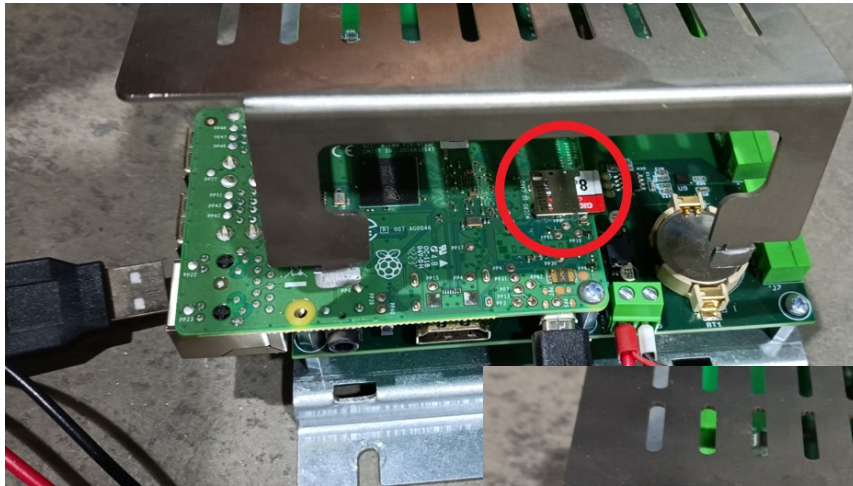
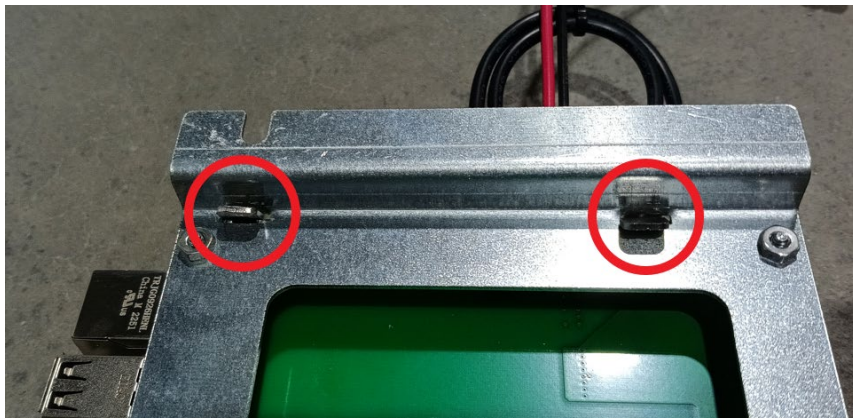
Remove board from the oven

Step 5

Turn the board assembly upside down

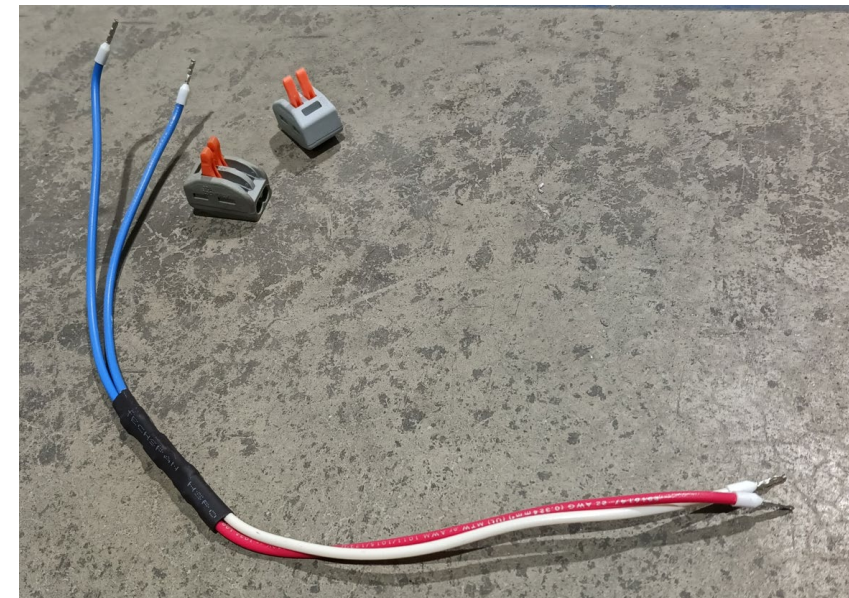
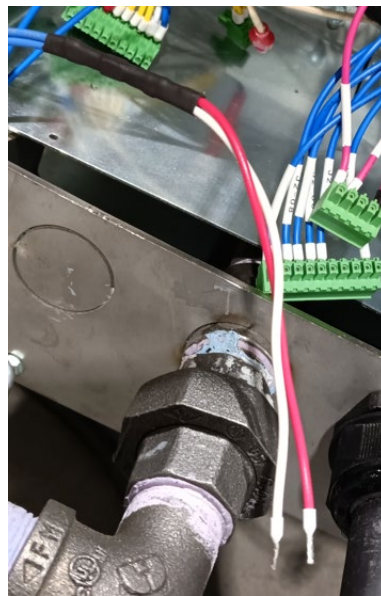
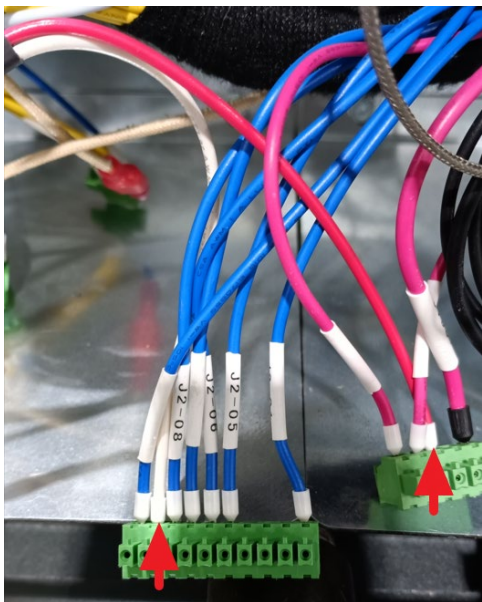
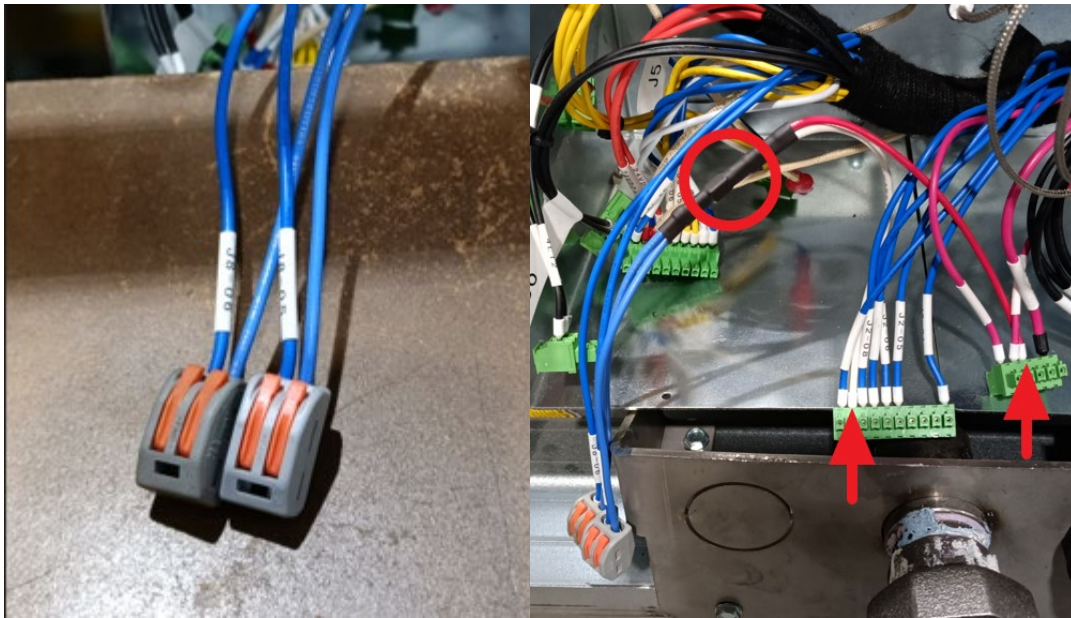
Unbend tabs to open top cover

Remove SD card



Step 6

Remove optomofet adapter wires. Locate J8-05 & J8-06 wires and remove connectors. Remove red and white wires from green PCB connectors.



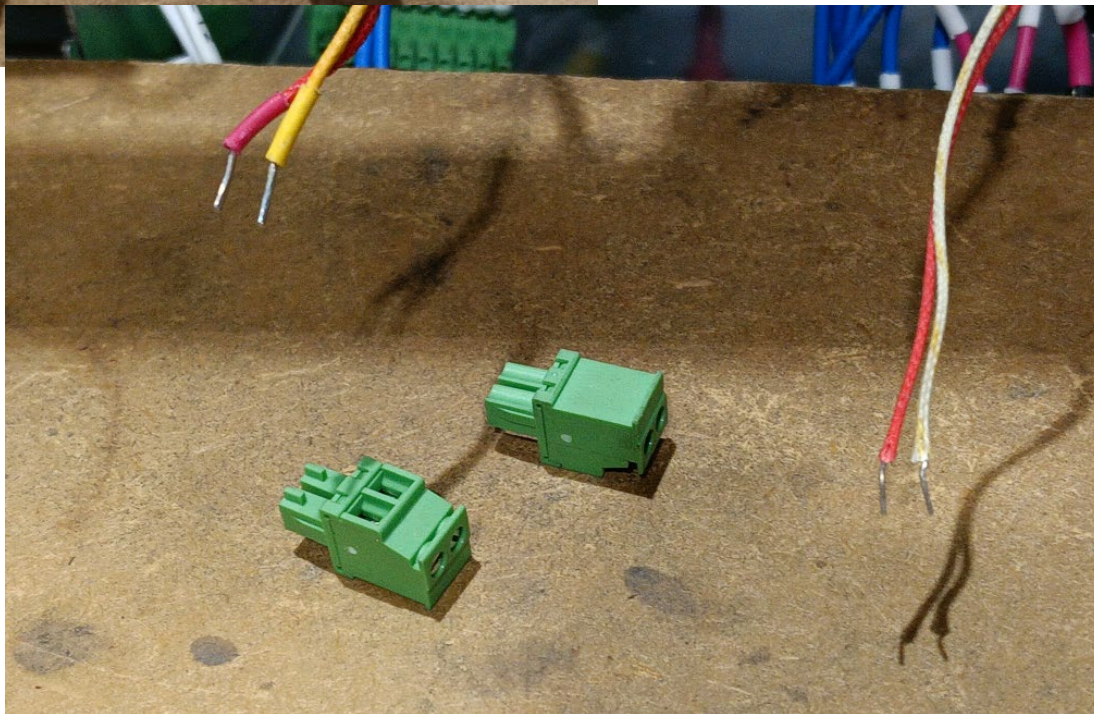
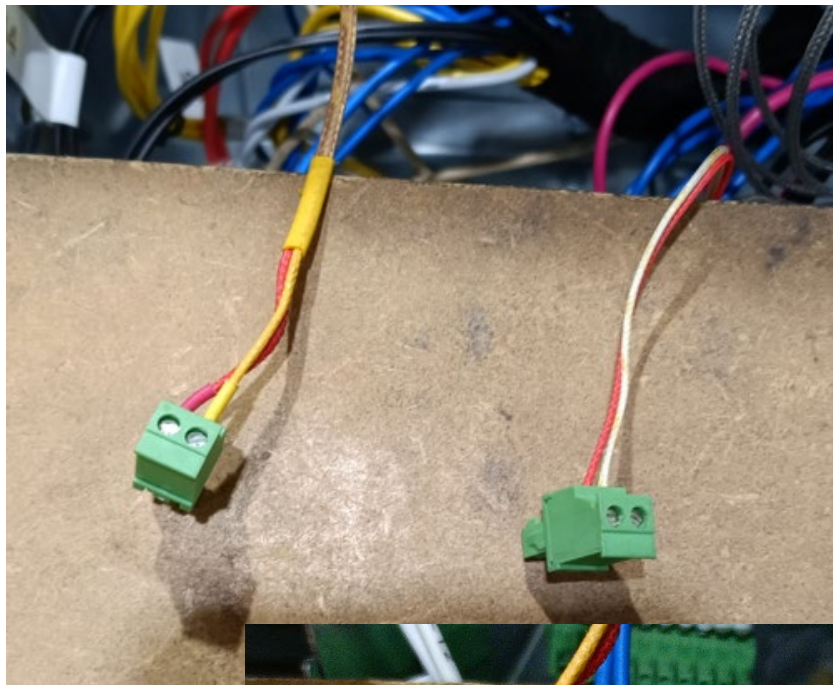
Step 7

Connect J8-05 & J8-06 wires to new 6 pin green PCB plug supplied in the kit as shown. Plug them in the right side connector ports.



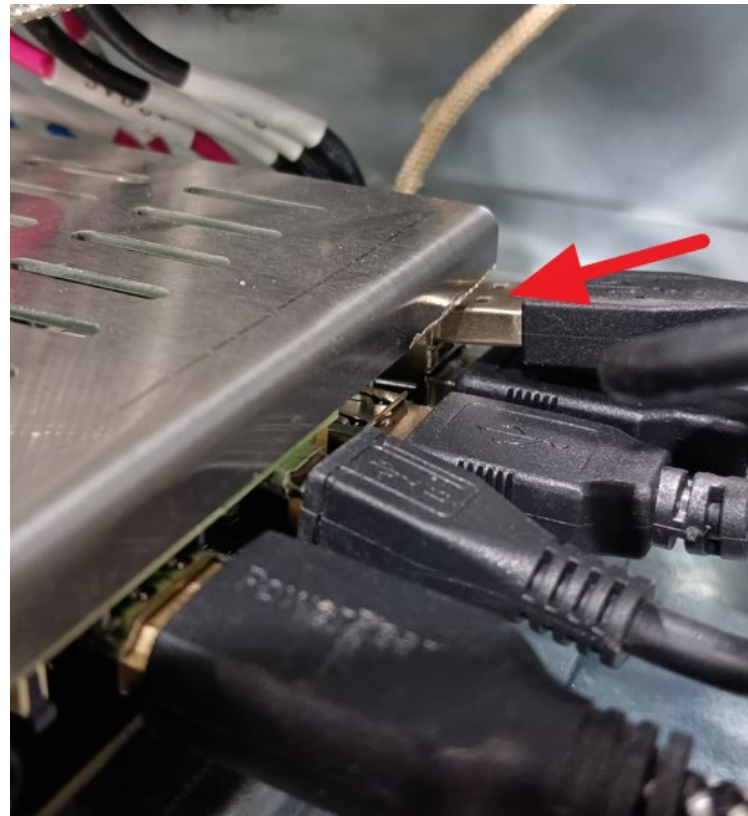
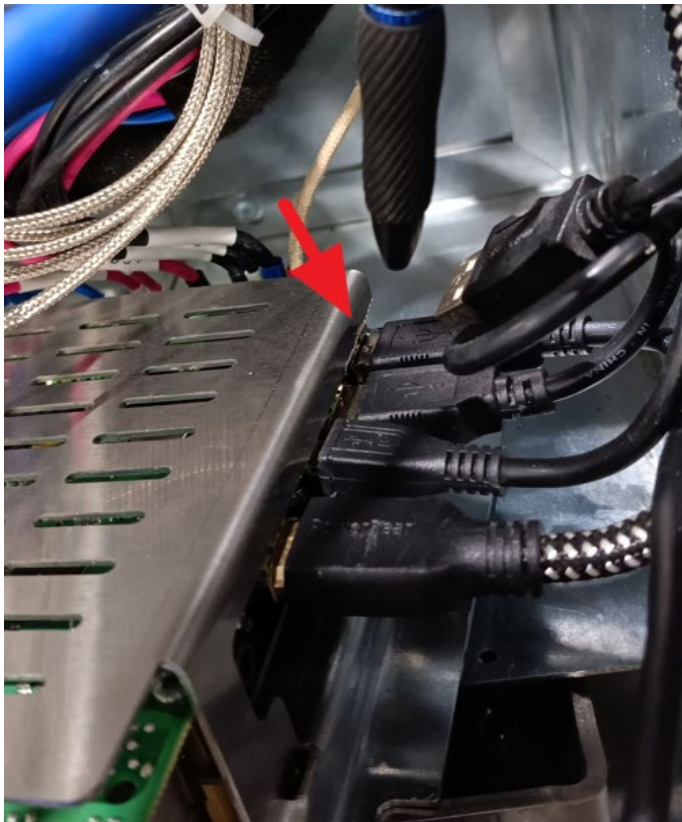
Step 8

Remove the thermocouple green connectors.



Step 9

Plug the touchscreen USB cable in the right side upper port as shown

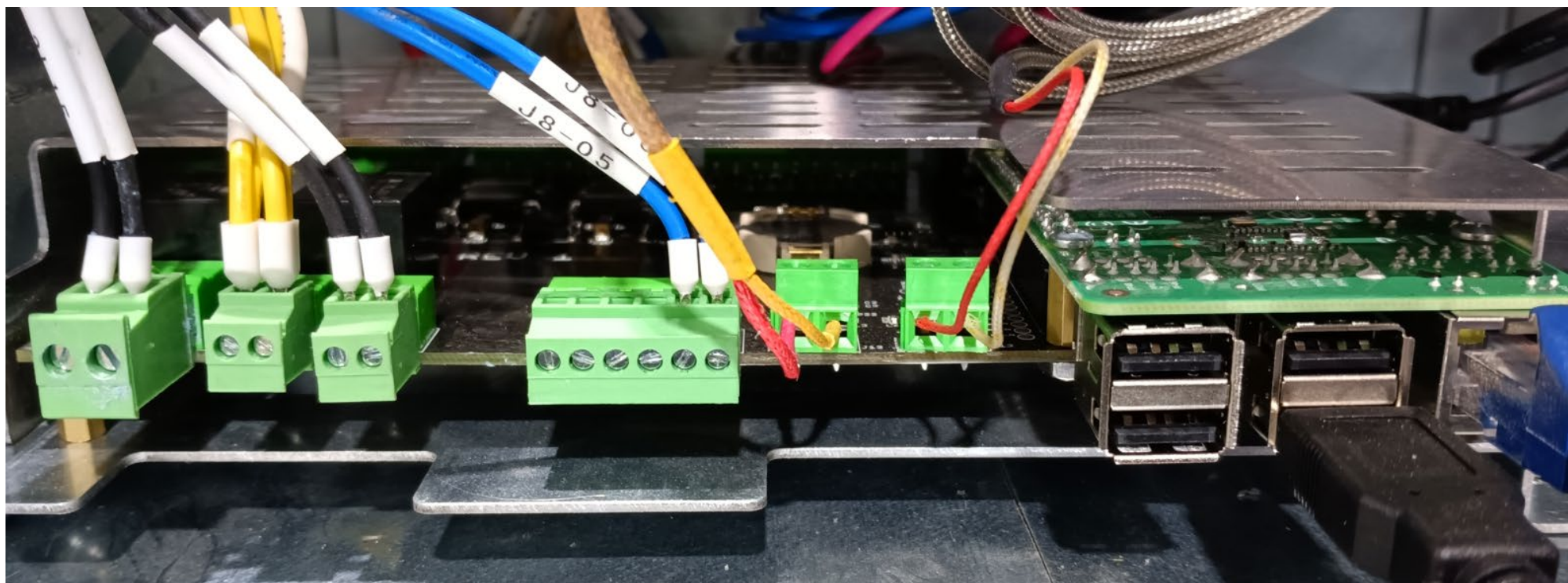


Step 10

Put the new control board assembly in place.

Plug the new J8-05 / J8-06 connector in place.

Plug the thermocouple wires as shown. Top sensor to the left, bottom sensor to the right. Red wires to the left, yellow wires to the right.



Step 11

Put the fixation screw
back in place.

Close the rear panel

Power up the oven and
ensure everything is
working properly

