

# VOLCANO CHANGE ENTRY / EXIT RADIANT INFRARED ELEMENTS SIDE



# Step 1

Shut off main power switch and disconnect plug from the wall.

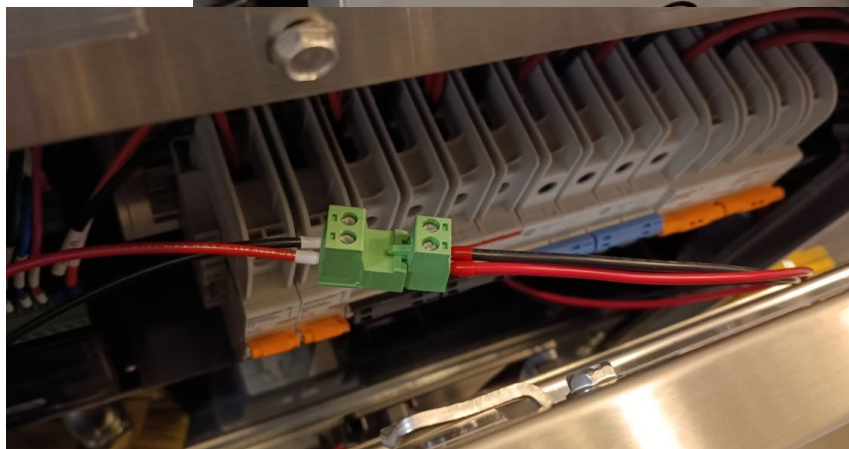


## Step 2

Remove rear panel.

\*\*\*Be careful\*\*\*

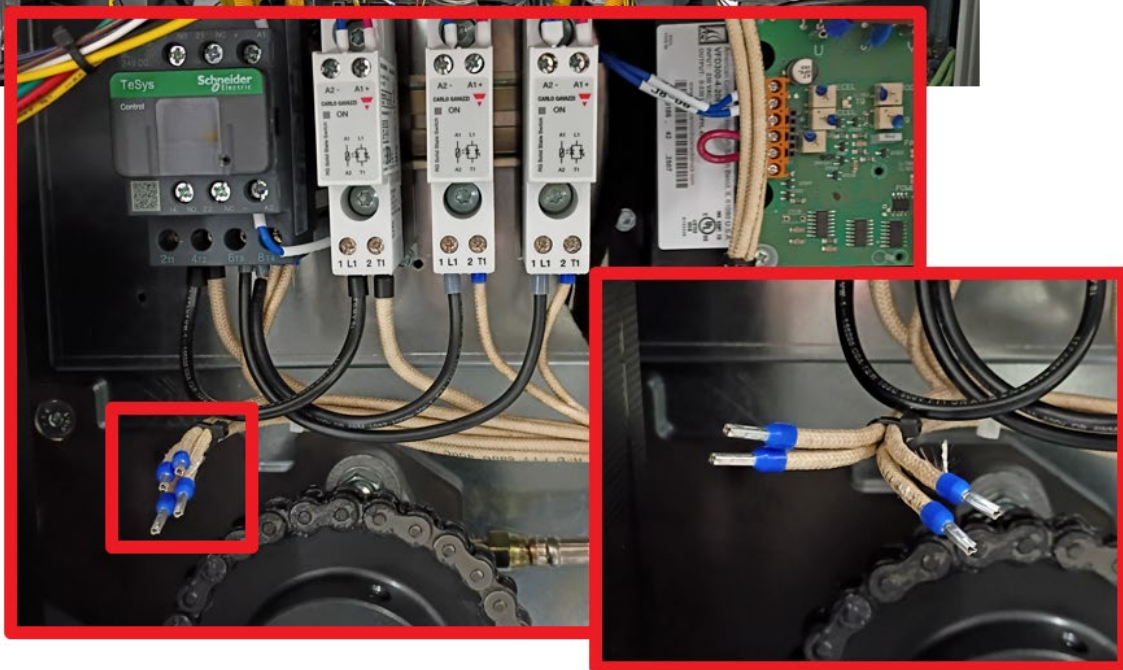
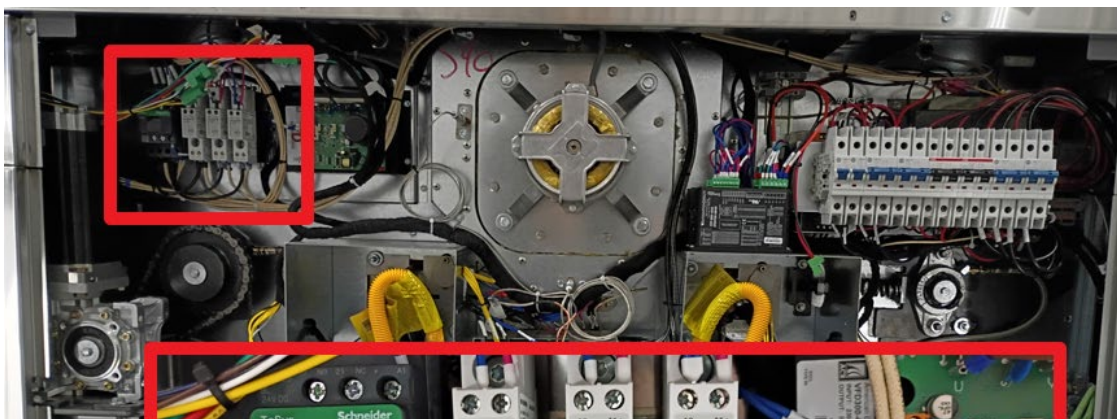
Unplug the cooling fan connector before removing completely the panel\*\*\*



## Step 3

Locate the unplugged radiant elements wires which goes on the other side (new exit side).

Follow these wires and seperate/identify them by pair for each cartridge.

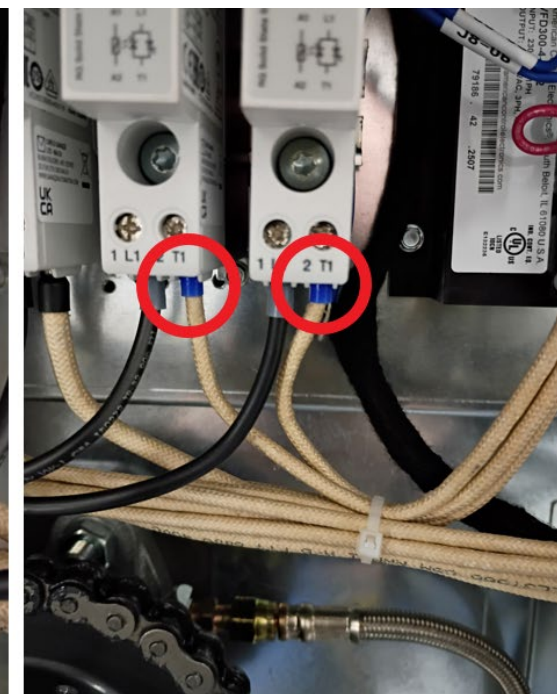
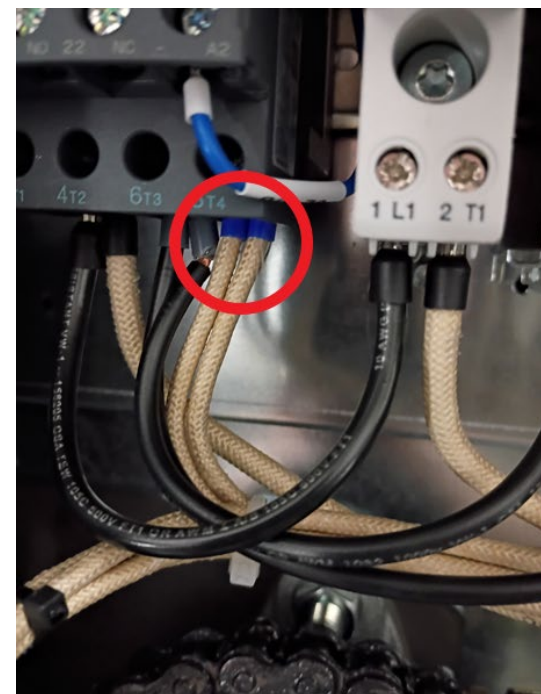
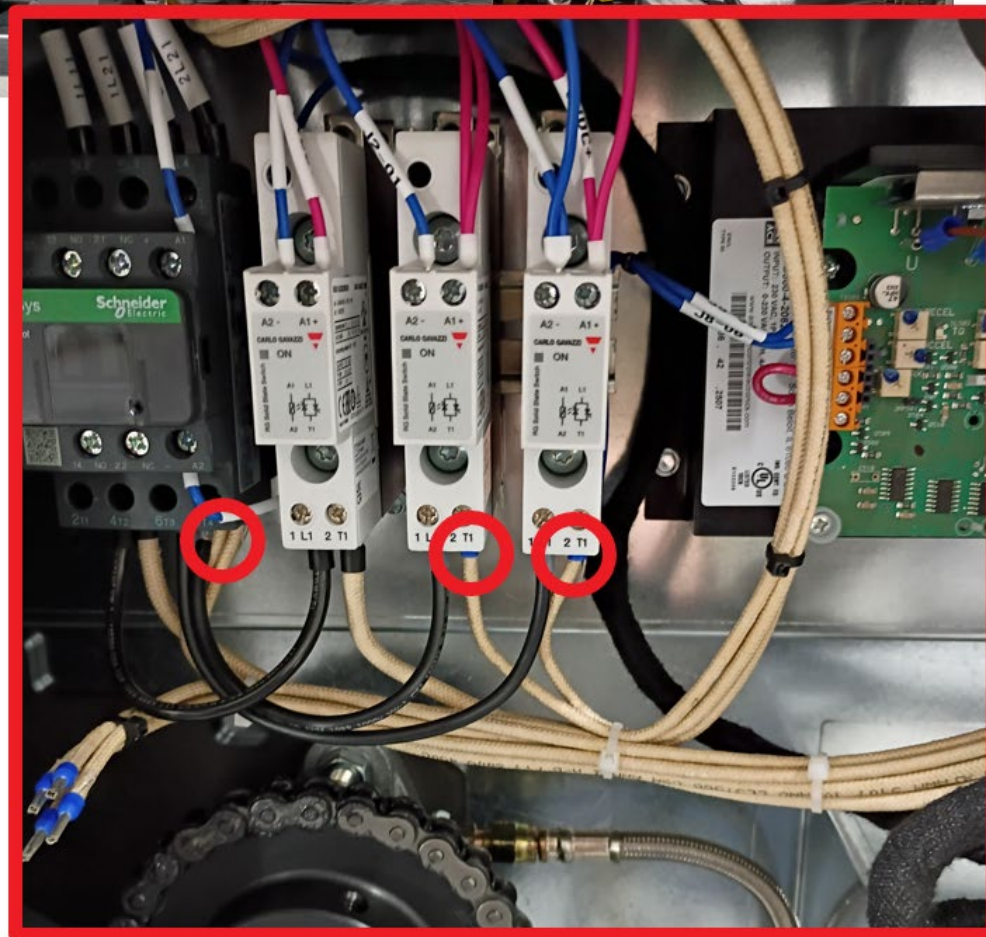
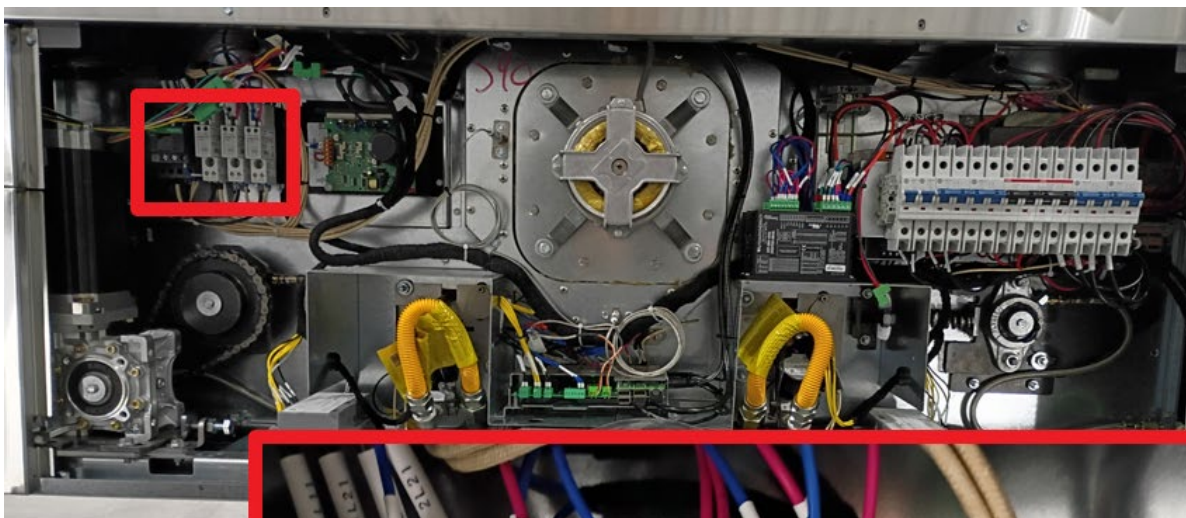


# Step 4

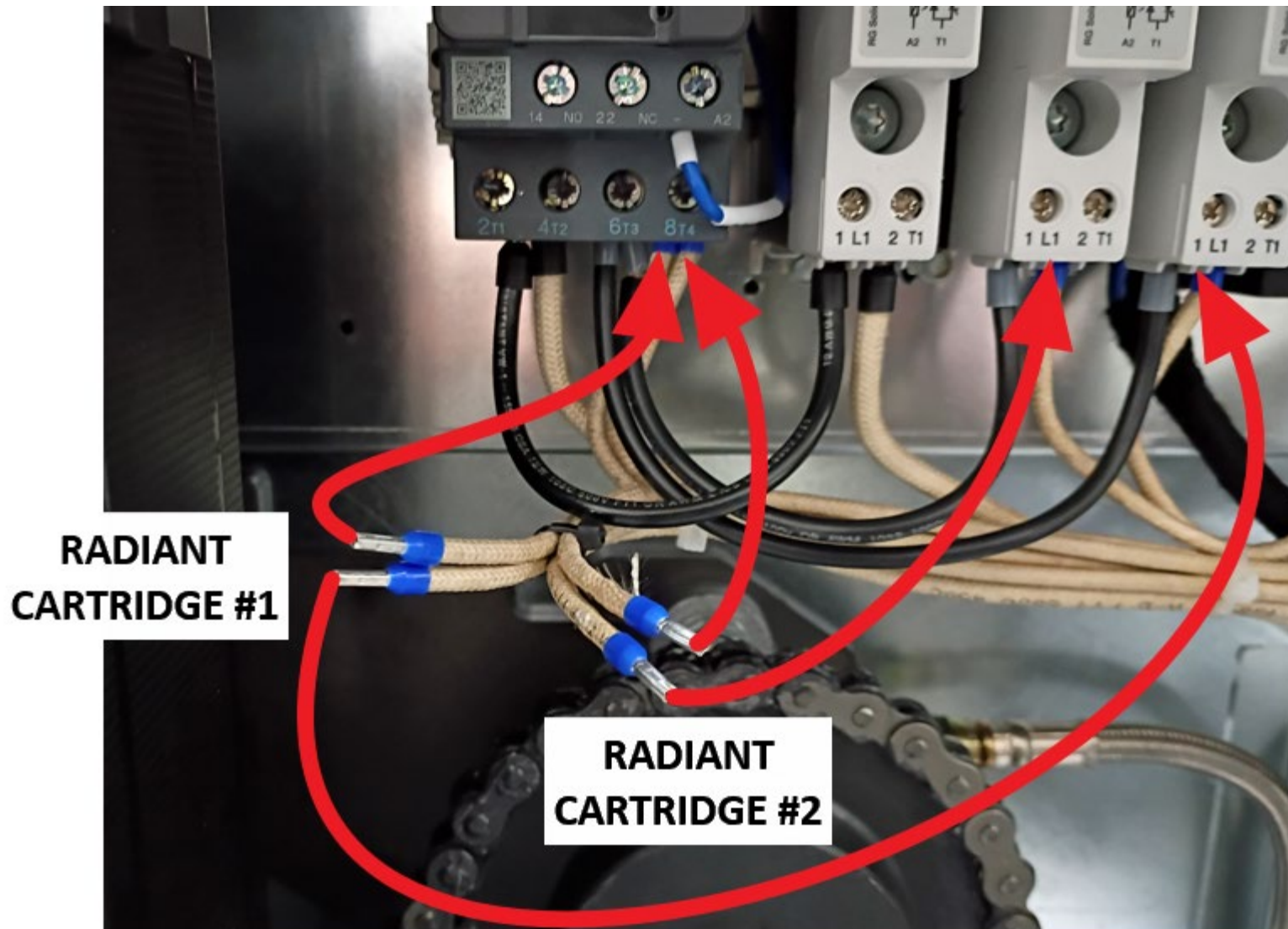
Locate the plugged radiant element wires and unplug them.

4 micamat high temperature wires with blue terminals.

- 2 wires Contactor
- 1 wire SSR #2
- 1 wire SSR #3



## Step 5

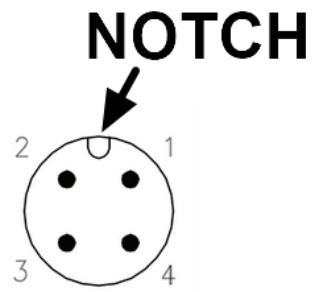


Plug the previously identified wires instead.

\*\*\*Each cartridges must have one wire in the contactor and the other one in the SSR\*\*\*

It doesn't matter which one.

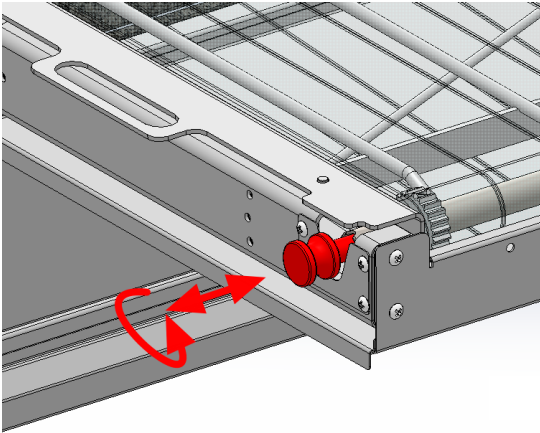
# 7.1



## Step 7

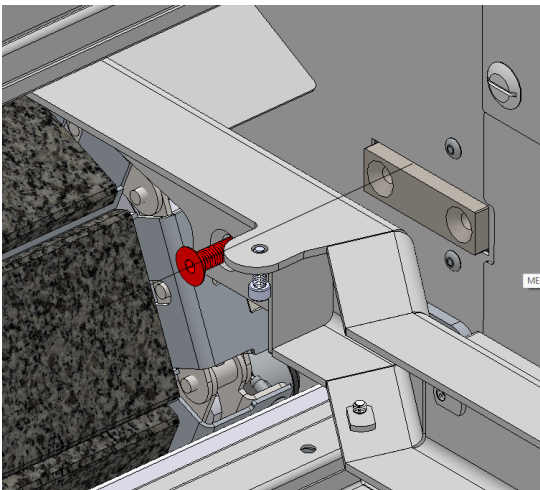
Remove the entry / exit mesh conveyors for easier access to radiant cartridges inside the oven.

# 7.2



1. Unscrew the mesh conveyors 4 pins electrical connector from the corner.
2. Disengage the mesh conveyor handle and pull out the mesh.
3. Unscrew the entry & exit conveyor arm and remove them.

# 7.3

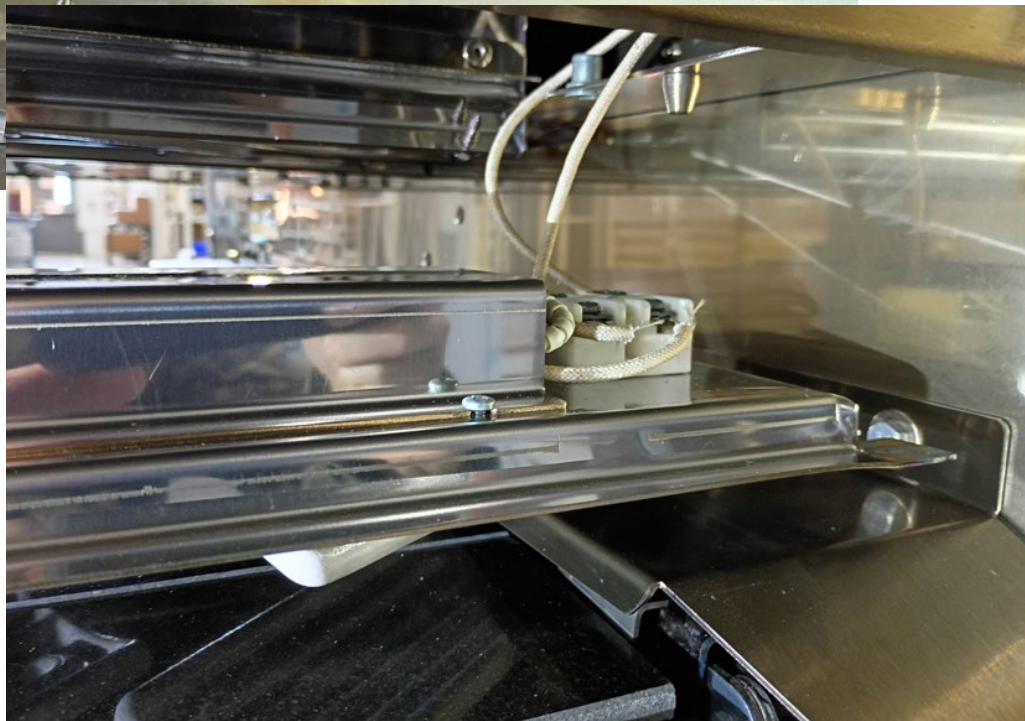


## Step 8

Both radiant infrared elements cartridges must be located at the exit side.

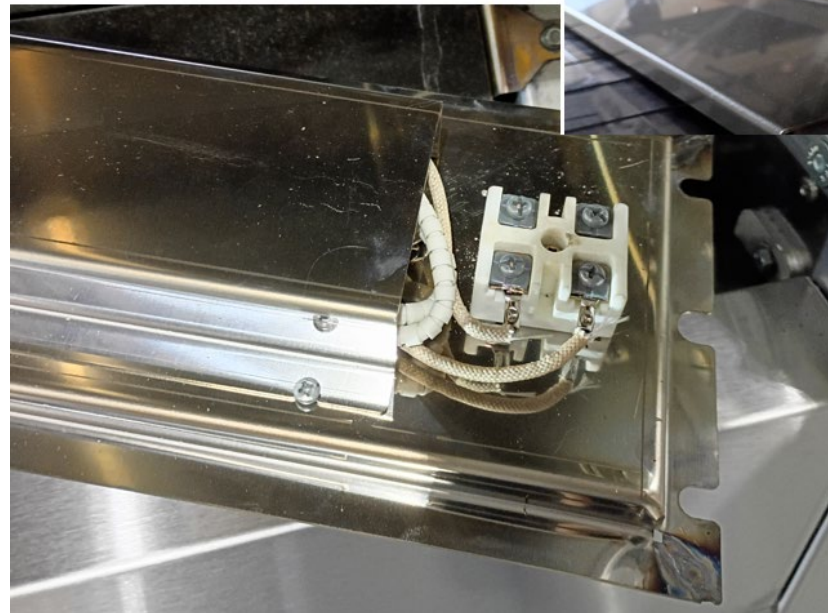
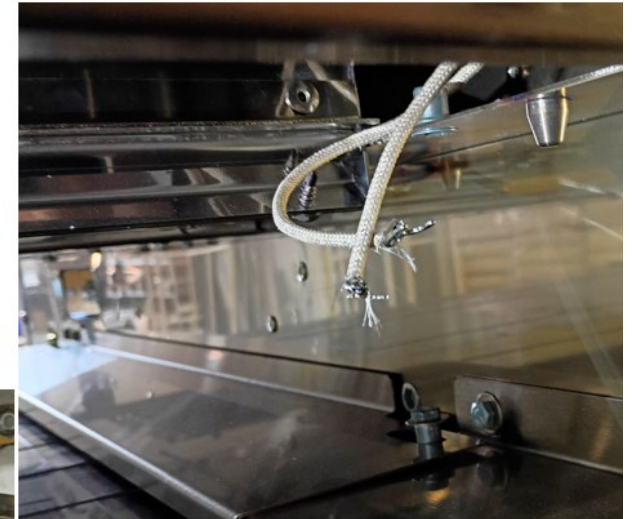
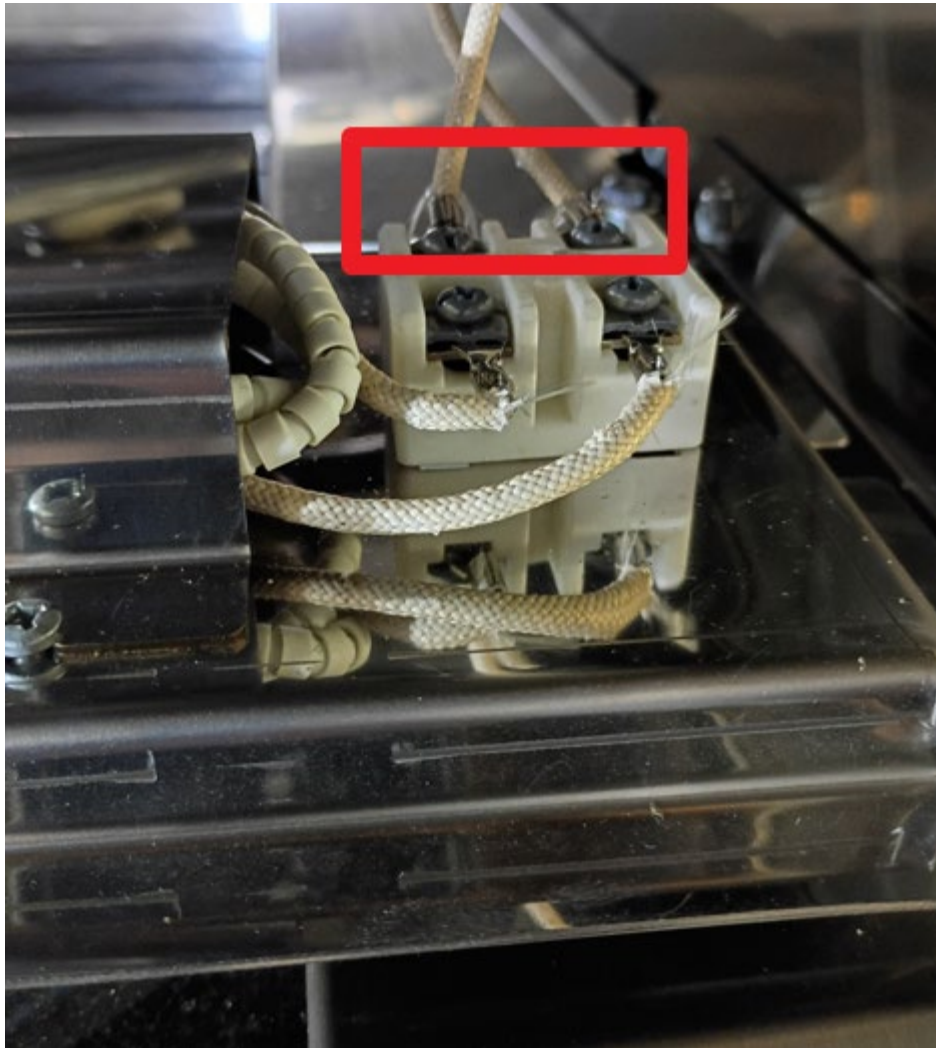
Unscrew the 2 hex bolt retaining the radiant cartridge on the rear wall side.

Gently slide the cartridge backward and drop it on the stone surface.



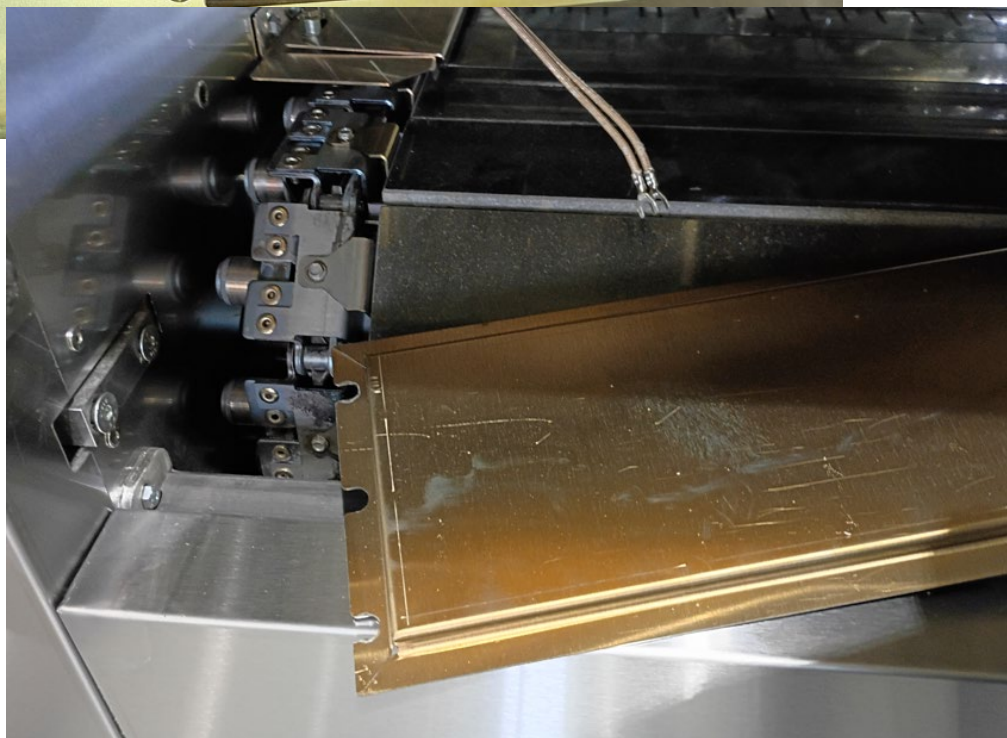
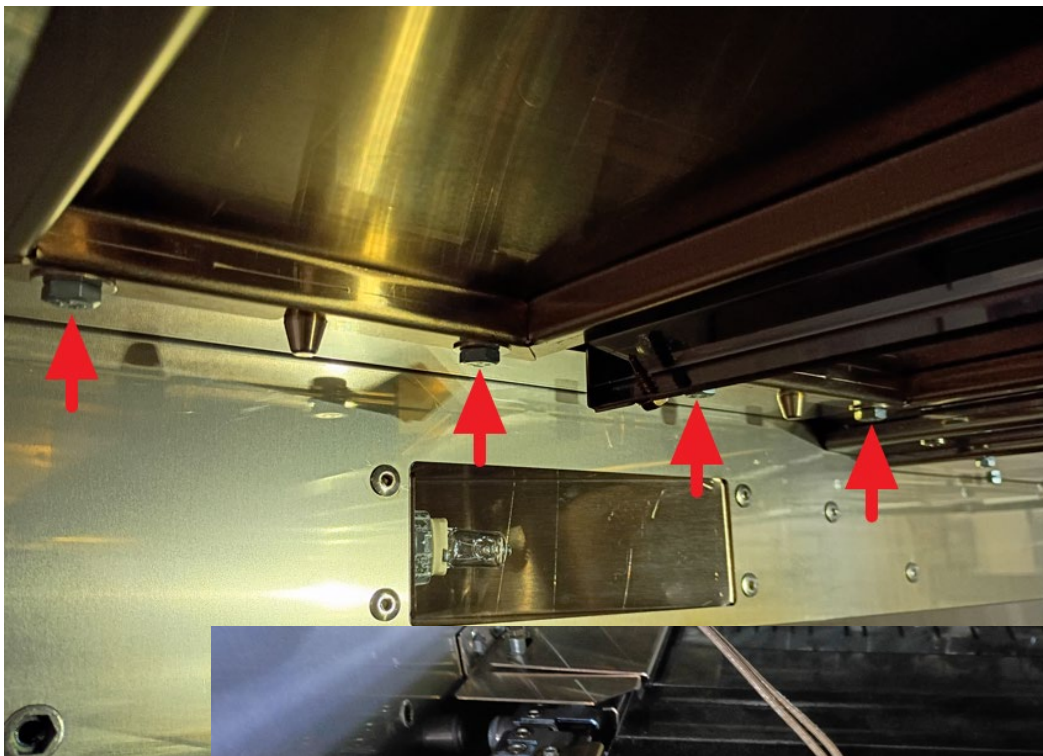
# Step 9

Unscrew wires to disconnect.



## Step 10

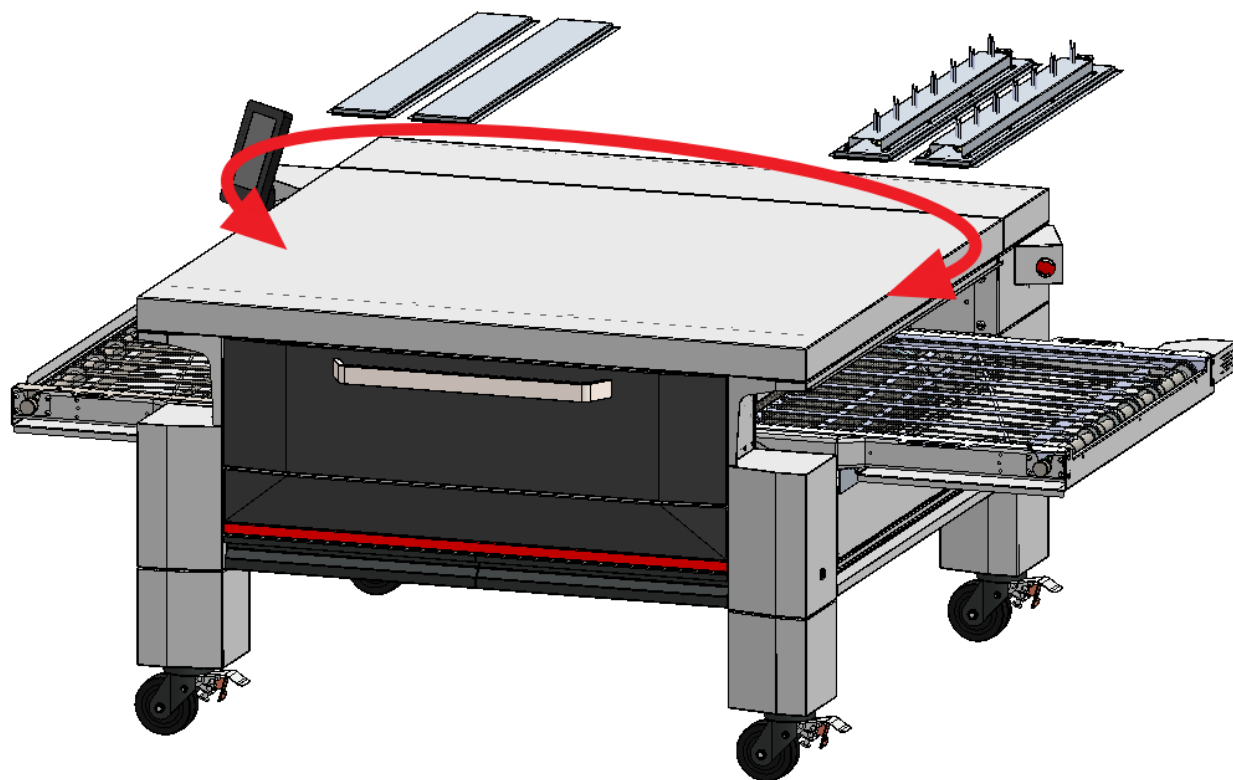
On the new exit side remove the capping plate using the same steps than the radiant cartridge.



# Step 11

Reverse both capping plates and radiant cartridges at the entry and exit sides.

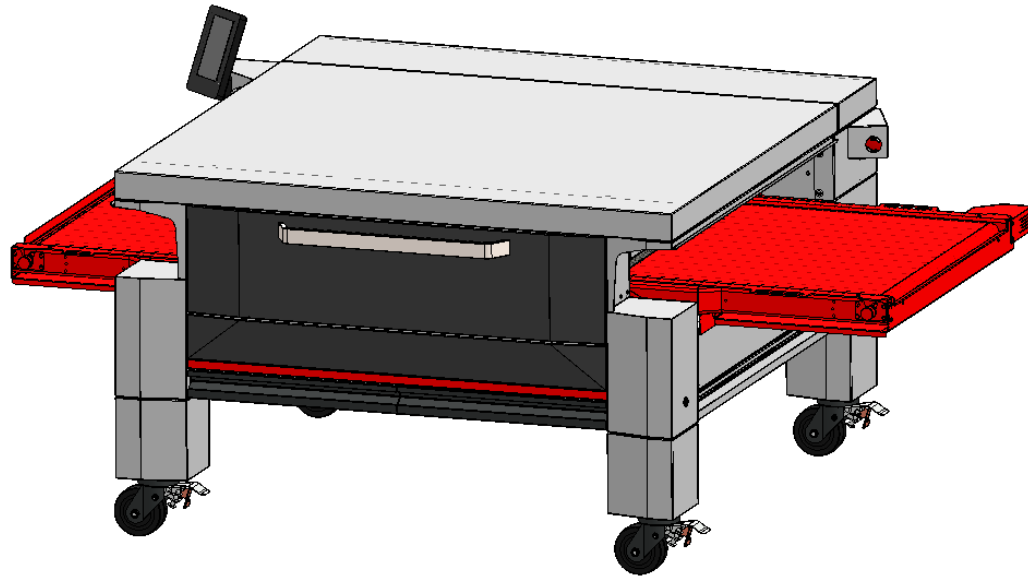
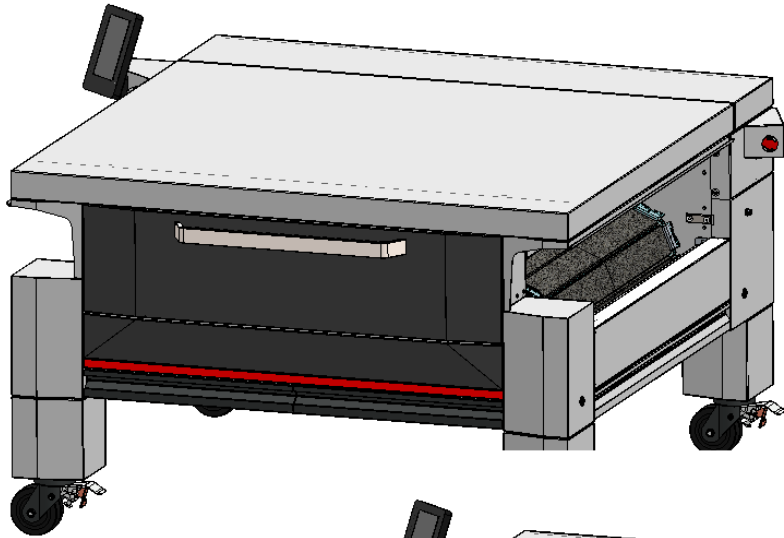
Plug the new cartridge wires.



## Step 12

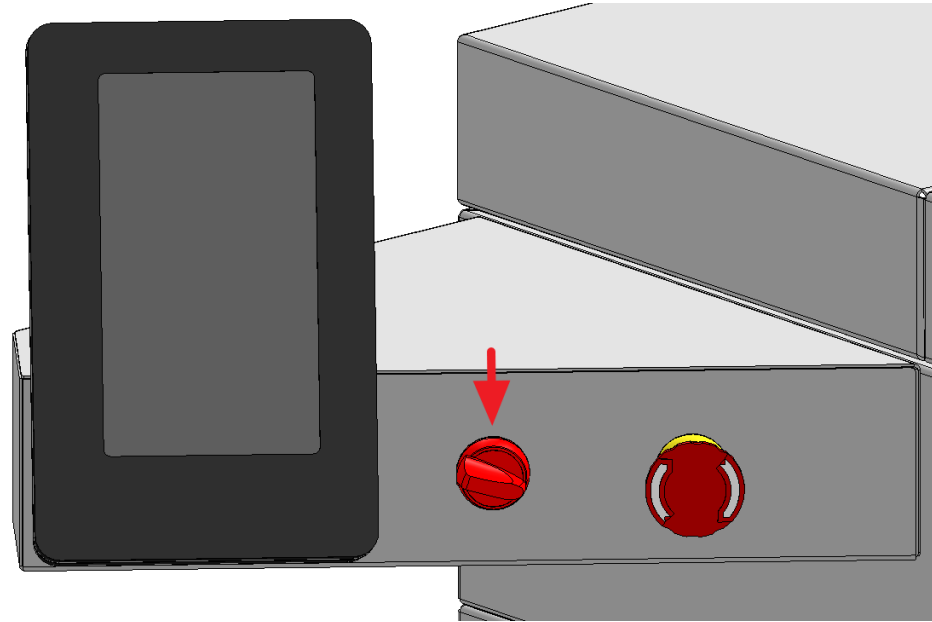
Reinstall entry exit conveyors.

Make sure everything works properly and re-install rear panels.



# Step 13

- Turn the direction switch to reverse motor rotation side.



- Be sure the entry and exit mesh conveyor arms are on the proper side. Entry conveyor must go over the stones and exit conveyor must be located lower than the stone surface.