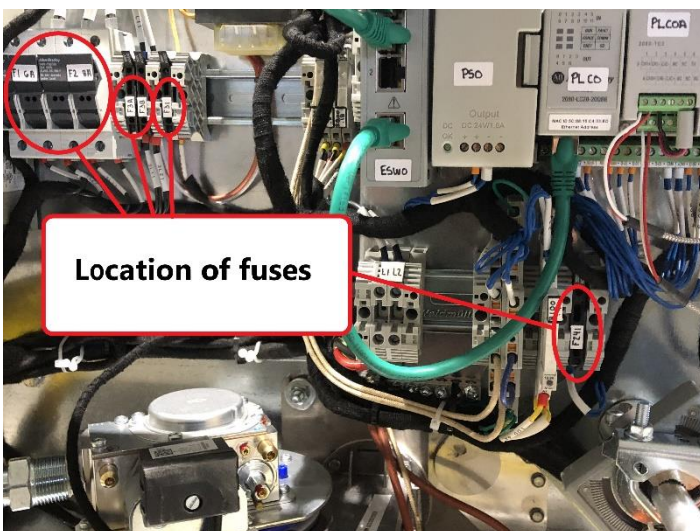
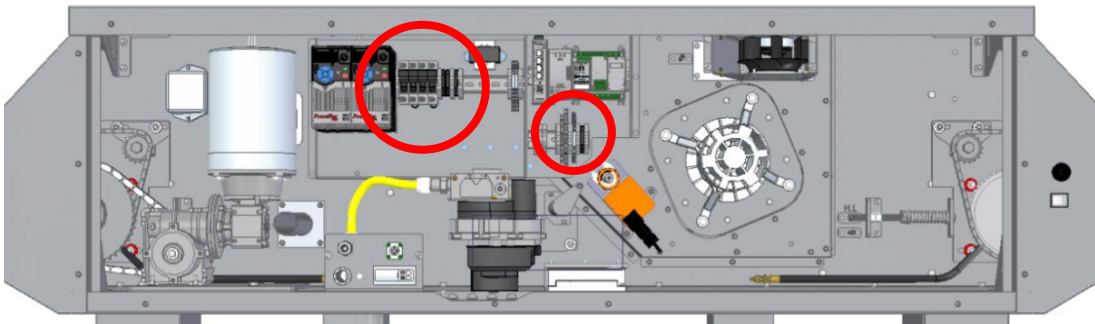
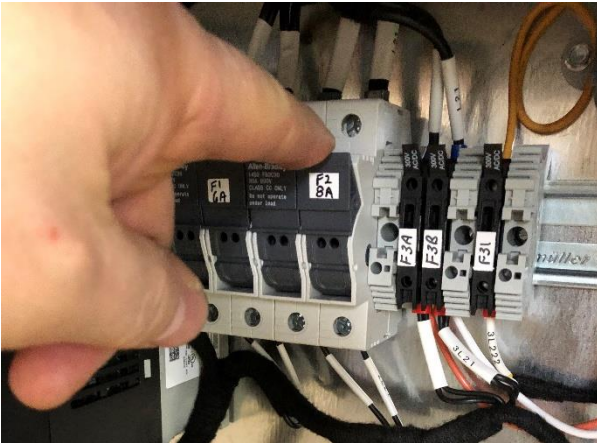


Turn OFF the oven with the power switch on the side of oven.

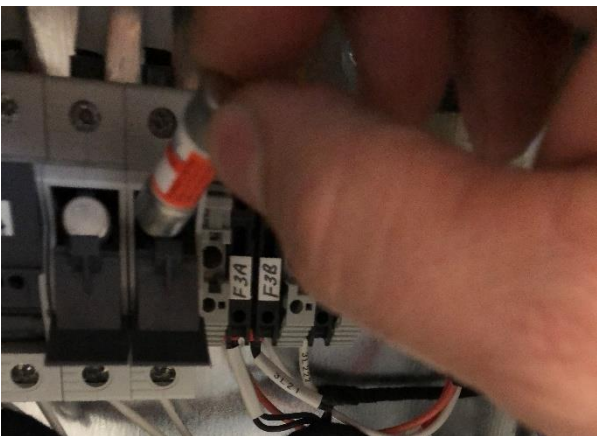


Remove the rear panels.





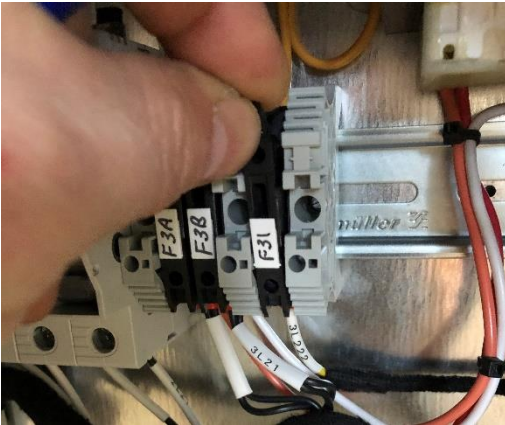
Pull on the upper top to open the fuse holder for F1 et F2.



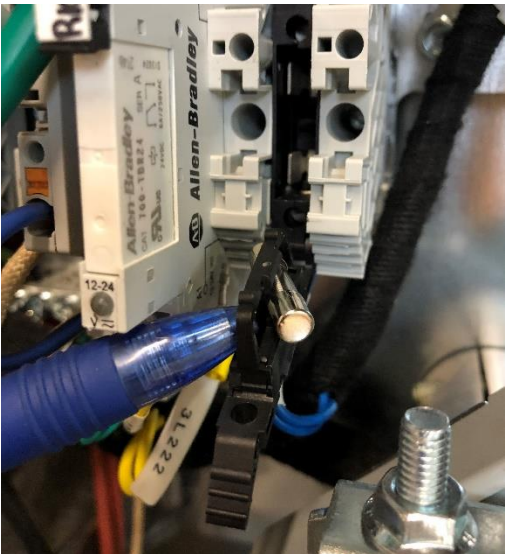
Remove the fuse and check it.

Replace a good fuse.

Push to close the fuse holder.



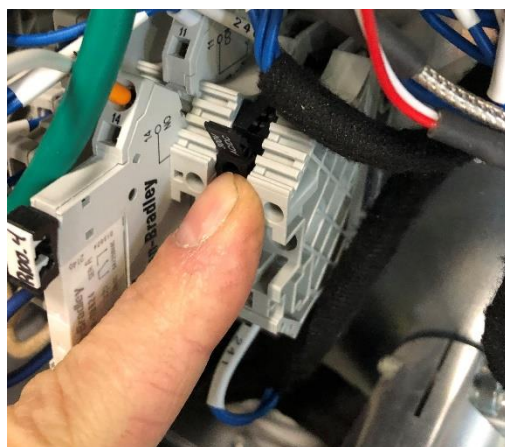
Pull on the upper to open the fuse holder for F3A, F3B, F31 and F241.



With a pen or something else, pry the fuse out of its slot.

Remove the fuse and check it.

Replace a good fuse.



Push to close the fuse holder.

Make sure it is in place.