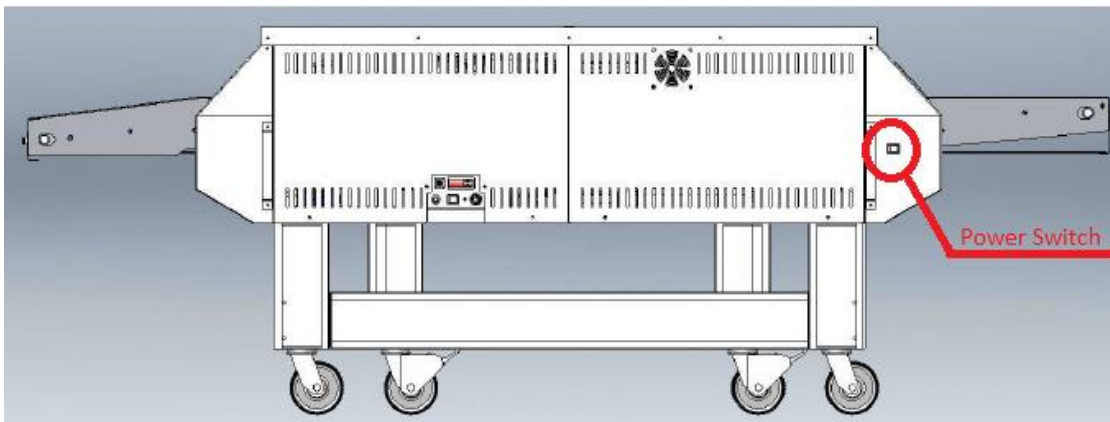
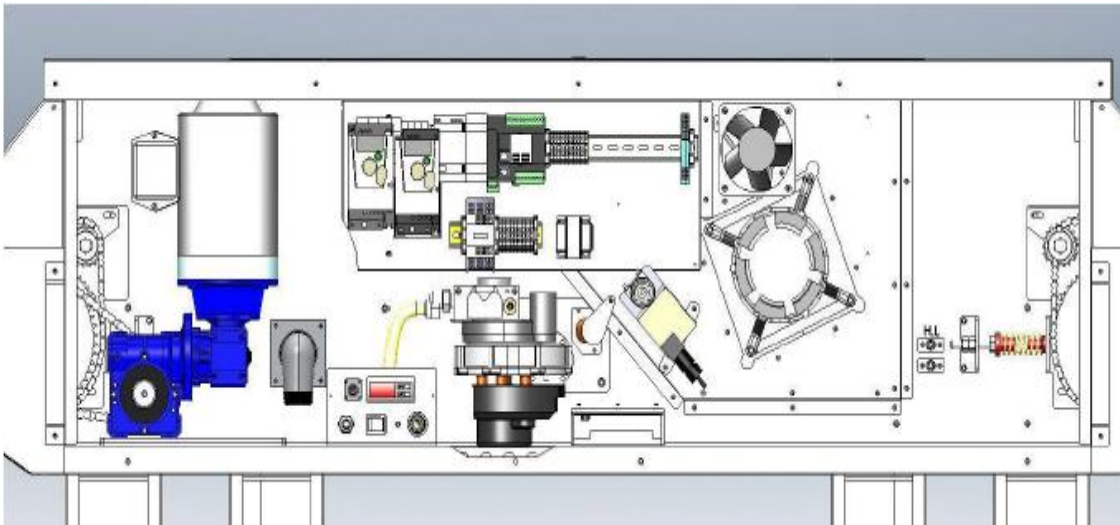


Turn OFF the oven with the power switch on the side of oven.



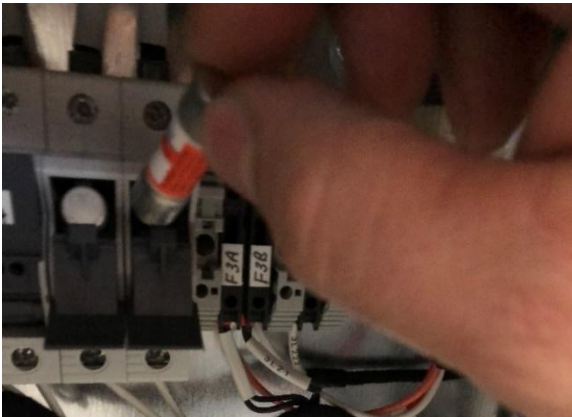
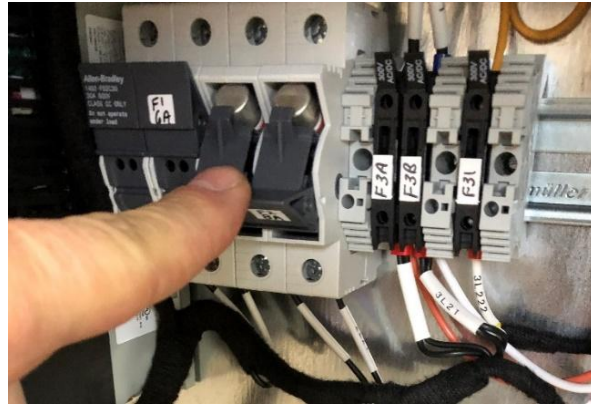
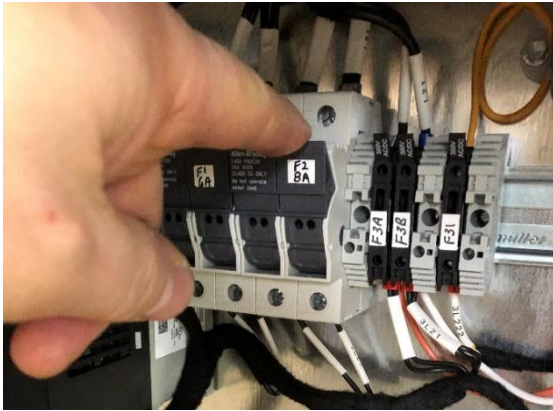
Remove the back panels. Be careful with the fan wires.



Locate the Fuses:



Pull on the top to open the fuse holder for F1, F2, F4 & F5.

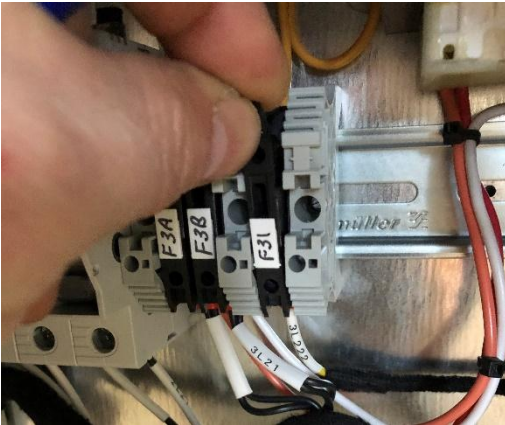


Remove the fuses and check them.

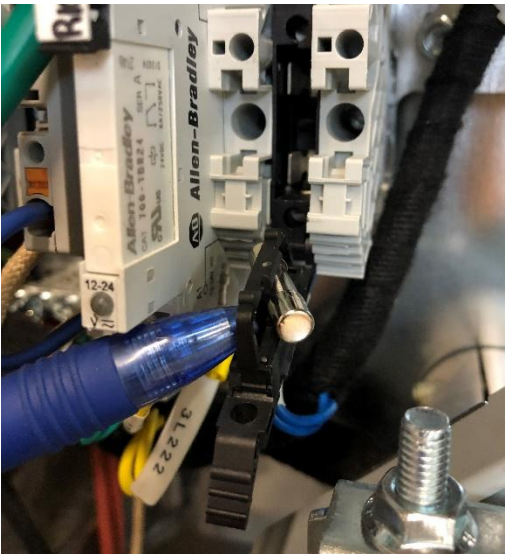
Replace a with a new/good fuse.

Push to close the fuse holder.

Pull on the top portion to open the fuse holder for F1, F2, F4 & F5.



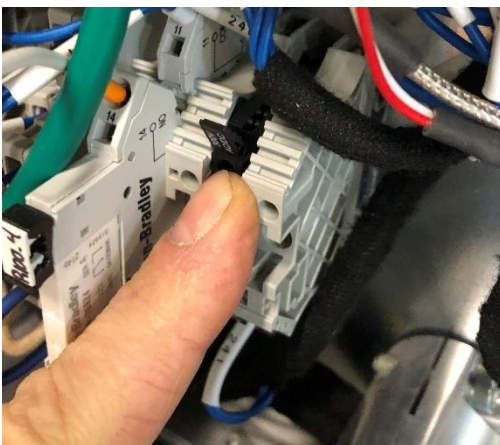
Pull on the upper to open the fuse holder for F3A, F3B, F31 and F241.



With a pen or something else, pry the fuse out of its slot.

Remove the fuse and check it.

Replace a good fuse.



Push to close the fuse holder.

Make sure it is in place.